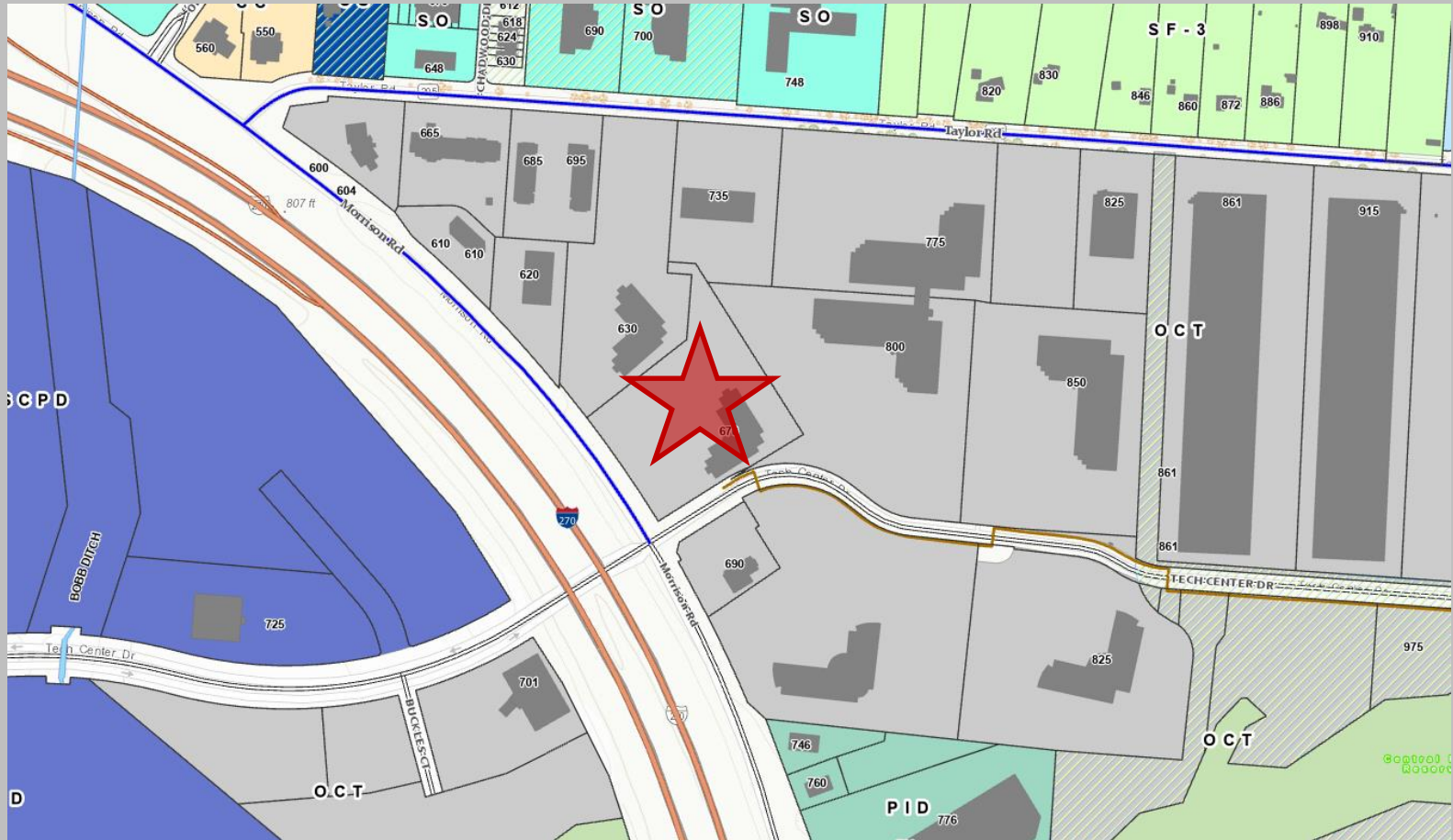


670 Morrison Rd

Landscape Renovation

DR-009-2020

Location/Zoning Map



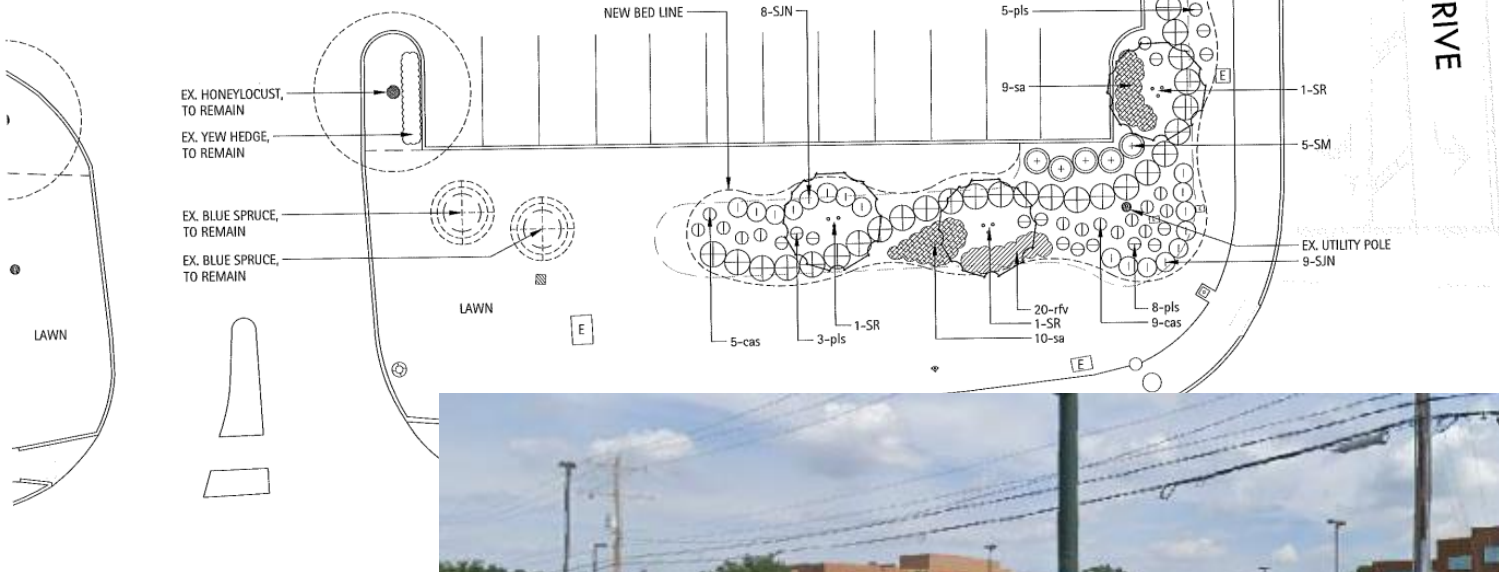
Summary

- Design Review for removal and replacement of landscaping
 - Code doesn't contain many relevant standards for projects of this scope
 - Code does state to try to utilize existing landscaping
 - Mature blue spruce trees to remain
- Fairly common request to remove older/dying vegetation and replace with new/healthy plantings
 - Similar request in 2019 for Stoneridge Plaza

Landscape Plan

PLANT SCHEDULE

SYMBOL	BOTANIC NAME	COMMON NAME	SIZE	REMARKS
ORNAMENTAL TREES				
SR	3 <i>Syringa reticulata</i> 'Ivory Silk'	Japanese Tree Lilac	1.75" cal.	B&B/Single Stem
DECIDUOUS SHRUBS				
SIN	17 <i>Spiraea japonica</i> 'Neon Flash'	Neon Flash Spiraea	18-24" ht.	#3 Container
SM	10 <i>Syringa meyeri</i>	Dwarf Korean Lilac	18-24" ht.	#5 Container
EVERGREEN SHRUBS				
TM	31 <i>Taxus media</i> 'Densiformis'	Dense Yew	36"	B&B
PERENNIALS, ORNAMENTAL GRASSES				
cas	19 <i>Calamagrostis x acutiflora</i> 'Karl Foerster'	Karl Foerster Feather Reed Grass	2 gal.	CQ/24" o.c. spacing
pls	16 <i>Perovskia atriplicifolia</i> 'Little Spire'	Compact Russian Sage	1 gal.	CQ/24" o.c. spacing
rflv	35 <i>Rudbeckia fulgida</i> 'Vitte's Little Suzy'	Vitte's Little Suzy Black-eyed Susan	1 gal.	CQ/18" o.c. spacing
sa	26 <i>Sedum 'Autumn Joy'</i>	Autumn Joy Sedum	1 gal.	CQ/18" o.c. spacing



Summary

- DR Criteria
 - Stylistically compatible with other structures in the District
 - Improvement of the arch/character of the District
 - Contribute to the economic vitality of the District
 - Enhance the physical surroundings of the District
- Staff recommends approval
 - Reviewed by City Forester and no objections to request



Gahanna

Where currents connect