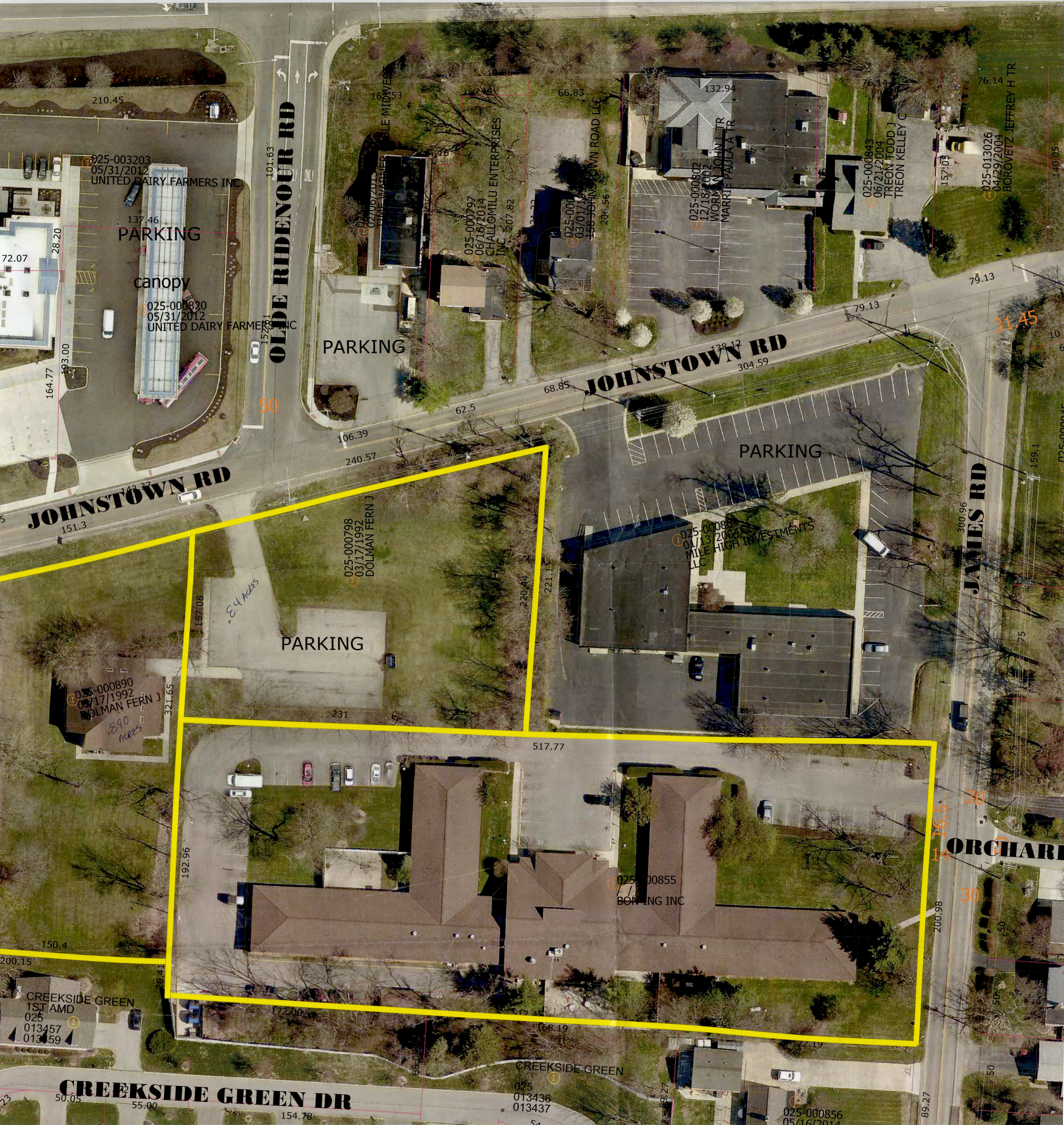




FRANKLIN COUNTY AUDITOR

MAP ID : S

DATE : 5/25/16



MAP FEATURE UPDATES

FRANKLIN COUNTY, OHIO

DISCLAIMER

ORIGINAL AERIAL PHOTOGRAPHY & PLANIMETRIC COMPILATION:
 ORIGINAL CADASTRAL COMPILATION: (UPDATING DONE ON TRANSACTIONAL BASIS)
 CONTOURS ADDED & PLANIMETRIC UPDATES:
 DIGITAL ORTHOS ADDED & TOPOGRAPHIC UPDATES:
 COLOR ORTHOS ADDED:

MARCH 1987 (SOUTH HALF)
 MARCH 1988 (NORTH HALF)
 JANUARY 1989 THRU DECEMBER 1993
 SPRING 1990 (WEST HALF)
 SPRING 1991 (EAST HALF)
 EARLY 2000
 EARLY 2004

THE DATA ON THIS MAP WAS ORIGINALLY COMPILED AT 1"=100' WITH 2' CONTOURS BASED ON NORTH AMERICAN VERTICAL DATUM 1929 (WHEN DISPLAYED) AND 500' GRID TICKS BASED ON THE OHIO STATE PLANE COORDINATE SYSTEM, SOUTH ZONE AND NORTH AMERICAN DATUM 1983.

THIS MAP WAS PREPARED TO NATIONAL MAP ACCURACY STANDARDS USE BY THE FRANKLIN COUNTY AUDITOR, TO ASSIST IN THE APPRAISAL OF REAL PROPERTY IN FRANKLIN COUNTY, OHIO. THE TOPOGRAPHIC BASE WAS COMPILED AND IS UPDATED AT FIVE YEAR INTERVALS USING PHOTOGRAMMETRIC METHODS. FROM HIGH RESOLUTION AERIAL PHOTO THE CADASTRAL DATA WAS COMPILED FROM RECORDED DEEDS, SUBDIVISION AND SURVEY PLATS, AND OTHER PROPERTY RECORD DATA, AND IS UPDATED ON A TRANSACTIONAL BASIS. USERS OF THIS MAP ARE NOTIFIED THAT THE PRIMARY INFORMATION SOURCES SHOULD BE CONSULTED FOR VERIFICATION OF THE INFORMATION CONTAINED ON THIS MAP. THE AUDITOR'S OFFICE AND ITS SUPPLIERS MAKE NO REPRESENTATION OF ANY KIND, INCLUDING BUT NOT LIMITED TO, THE WARRANTIES OF MERCHANTABILITY OR FITNESS FOR A PARTICULAR USE, NOR ARE ANY WARRANTIES TO BE IMPLIED WITH RESPECT TO INFORMATION OR DATA FURNISHED HEREIN. NEITHER THE AUDITOR NOR FRANKLIN COUNTY, OHIO ASSUMES ANY LEGAL RESPONSIBILITIES FOR THE INFORMATION CONTAINED ON THIS MAP. USERS NOTING ERRORS OR OMISSIONS ARE ENCOURAGED TO CONTACT FRANKLIN COUNTY AUDITOR'S OFFICE, GIS DIVISION, (614) 462-7272.

SCALE : 1" = 30'