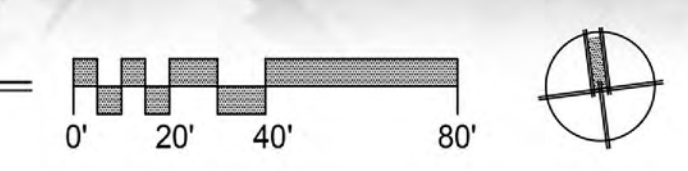






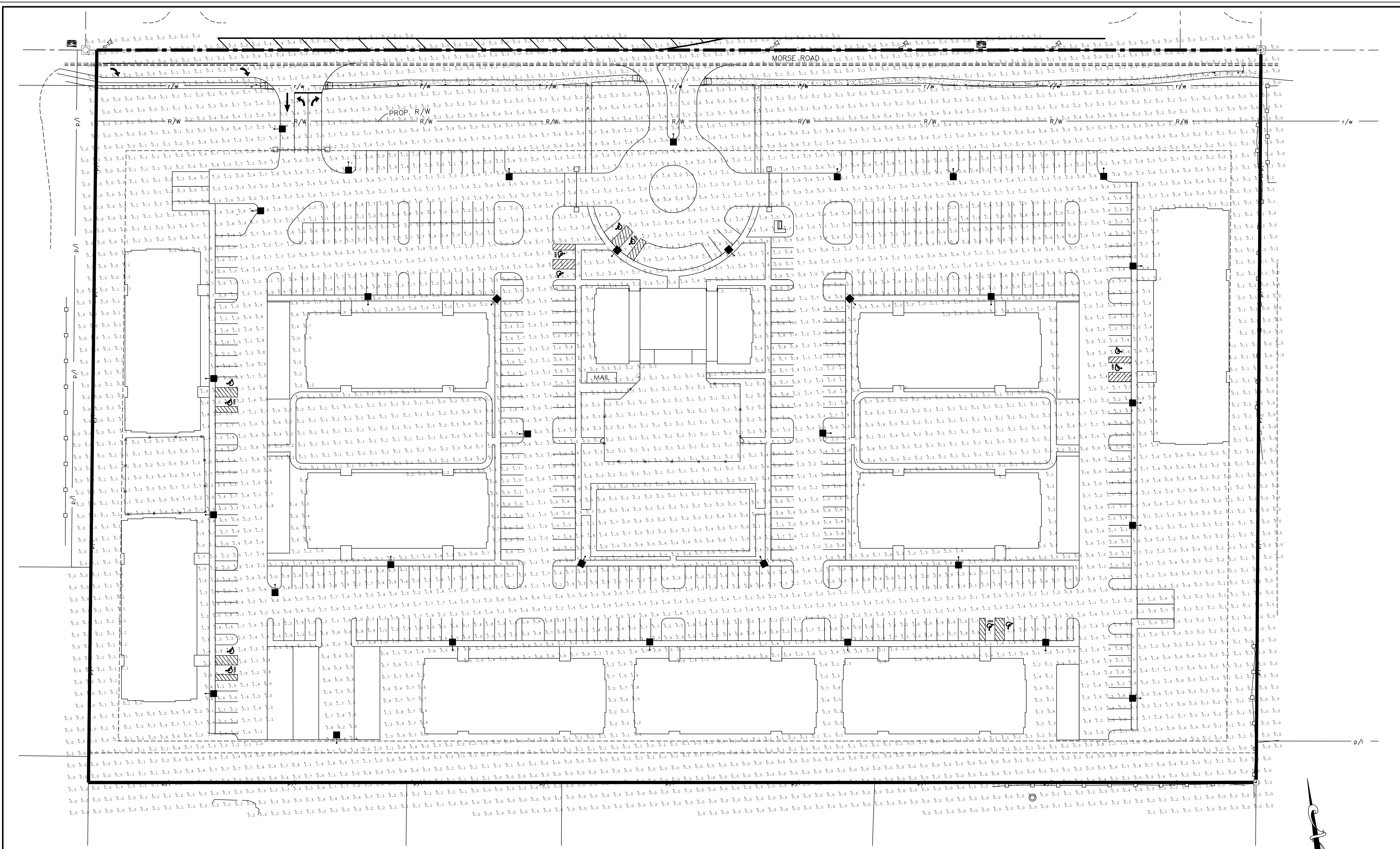
- LEGEND:**
- AF: STREET TREE - (2.5" CAL.) 8 TOTAL
 - Site Deciduous Tree (2.5" CAL.) 52 TOTAL
 - Site Deciduous Tree - Bald Cypress (2" CAL.) 20 TOTAL
 - Site Evergreen Tree (2" CAL.) 17 TOTAL
 - Site Ornamental Tree (2" CAL.) 28 TOTAL
 - : TREE PROTECTION FENCE

1 OVERALL LANDSCAPE PLAN
Scale: 1" = 40'-0"



BLENDON GARDENS
landscape • design • installation
9590 S. Old State Road,
Lewis Center, OH 43035
(blendongardens.com)
Phone: (614) 840-0500

PROJECT NO.: 211084		ORIGINAL ISSUE DATE: 11.29.22	
PROJECT MANAGER:	NO. DATE	DESCRIPTION	REVISIONS
DESIGNED BY:	1 01-31-23	MUNICIPALITY COMMENTS	
DRAWN BY: JM			
OVERALL LANDSCAPE PLAN		COLUMBUS	
ELLIOT PARC			
3500 Snouffer Road, Suite 225 Columbus, OH 43235 614.781.1661 phone www.v3co.com		DRAWING NO. L-1	



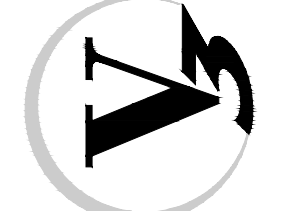
Elliott
PARC

PROJECT NO.: 211084
PROJECT MANAGER: MJR
DESIGNED BY: JRR
DRAWN BY: JRR

PHOTOMETRIC PLAN
ELLIOTT PARC

S04
COLUMBUS

3500 Snuffer Road,
Suite 225
Columbus, OH 43235
614-761-1661 phone
www.v3co.com



DRAWING NO.

EX-1

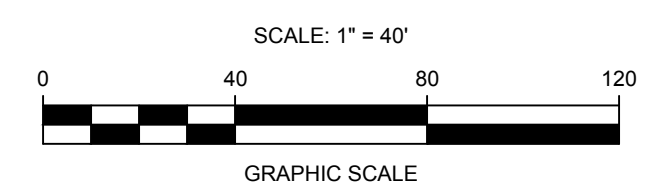
ENGINEER
V3 COMPANIES
3500 SNOUFFER ROAD, STE. 225
COLUMBUS, OHIO 43235
PHONE: 614-761-1661
FAX: 614-761-1328
CONTACT: ANDREW GARDNER, P.E.
E-MAIL: AGARDNER@V3CO.COM

ARCHITECT
HARPER ARCHITECTURAL STUDIO
HARPER ARCHITECTS, LLC.
105 COMMERCE PARK DRIVE, #A
WESTERVILLE, OHIO 43082
PHONE: (614) 895-2050 / FAX: (614) 895-2054
CONTACT: SCOTT R. HARPER, AIA, NCARB
E-MAIL: SCOTT@HARPERAE.COM

DEVELOPER/OWNER
THE STONEHENGE COMPANY
147 N. HIGH STREET
COLUMBUS, OHIO 43230
PHONE: (614) 509-9000
CONTACT: DOUG ERVIN
E-MAIL: DOUG@STONEHENGE-COMPANY.COM

NOTES:

1. THE LIGHT POLE LOCATIONS ON THIS PLAN SHOW THE RECOMMENDED PLACEMENT. ADJUSTMENTS TO THESE LOCATIONS MAY BE REQUIRED TO ACCOMMODATE SITE CONDITIONS.
2. LIGHT POLES SHALL BE OFFSET A MINIMUM OF 3' FROM THE BACK OF CURB OR SIDEWALK.
3. CALCULATION AREAS ABOVE ARE TAKEN WITHIN THE LIMITS OF PROPOSED PARKING LOT PAVEMENT AS SHOWN ON THIS PLAN.
4. THE PHOTOMETRIC PLAN WAS PREPARED USING THE FIXTURES IN THE SCHEDULE ON SHEET EX-2. NO SUBSTITUTIONS ARE PERMITTED WITHOUT APPROVAL BY THE ENGINEER.





LUMINOUS ZONE LED AREA LIGHT WATTAGE ADJUSTABLE

PERFORMANCE DATA

- Warranty:**
5 Years/10 Years
- IP Rating:**
IP65
- CRI (ra):**
70
- Operating Temperature:**
-22°F - 113°F
- Certification:**
cUL, UL, FCC
- Durable die-cast aluminum housing
 - Available in Bronze as standard, White or Black by special order
 - Efficiencies of up to 140W lm/W
 - 1-10v Dimming Driver
 - Photocell and 10KV Surge Suppression standard
 - Microwave Motion Sensor Available
 - T2, T3, T4, T5 Optics available, T3 standard
 - Small Yoke, Direct Mount and Slip Fitter all available

APPLICATIONS
Outdoor area lighting applications: Parking Areas, Recreation Areas, Plazas, Athletic Facilities, Advertising



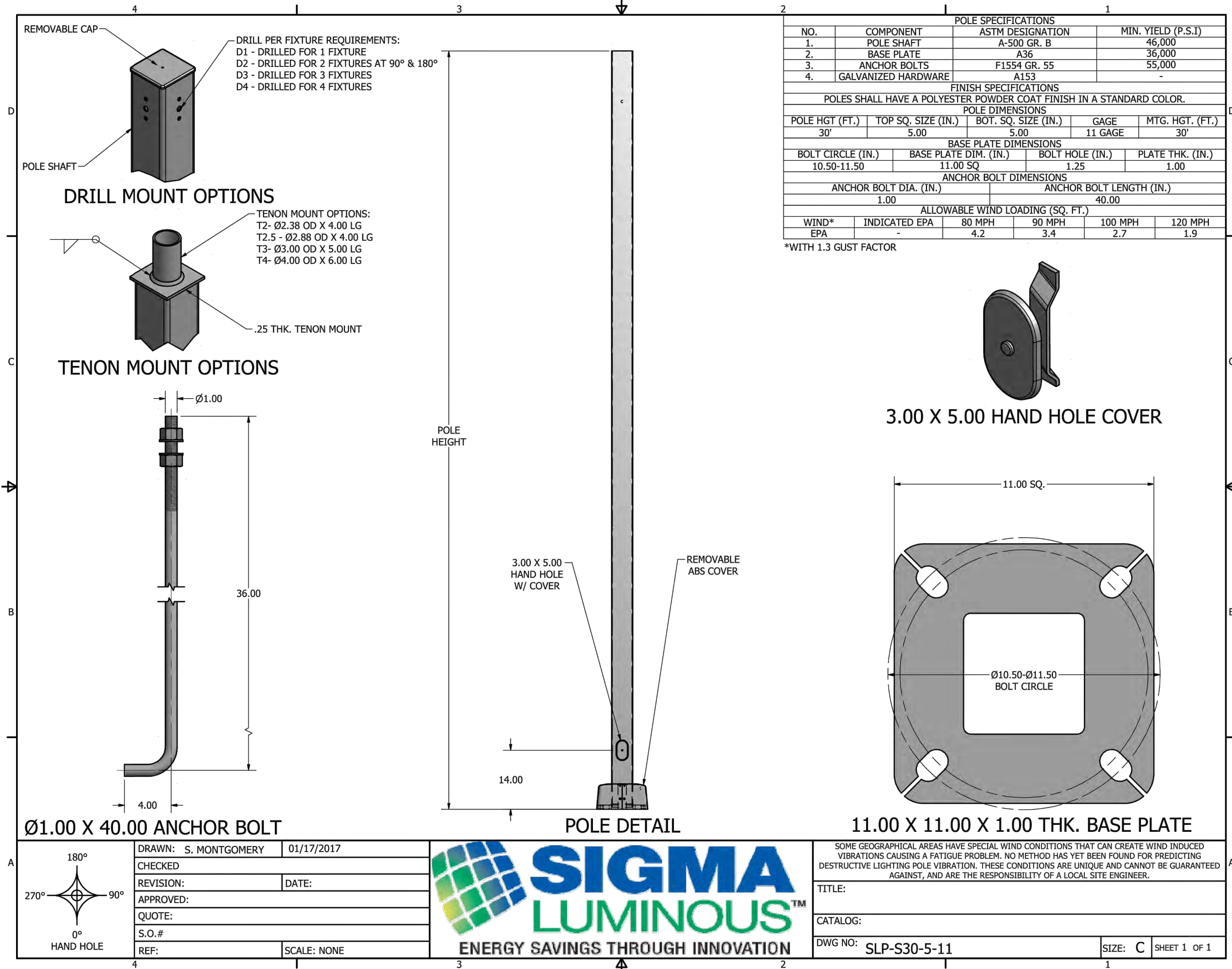
ORDERING INFORMATION

EXAMPLE: ZONE-04-150W-UNV-40K4-BR-SF-SC

A	B	C	D	E	F	I
Model	Series	Power	Input Voltage	Color Temp.	Optic	Options
ZONE	04	80W (80w, 60w, 50w, 40w) 100W (100w, 80w, 60w, 50w) 150W (150w, 120w, 100w, 80w) 200W (200w, 180w, 150w, 120w) 240W (240w, 200w, 180w, 150w) 300W (300w, 240w, 200w, 180w)	UNV (120V - 277V) HV (277V - 480V)	30K (3000K) 40K (4000K) 50K (5000K)	T2 (Type 2) T3 (Type III Std) T4 (Type 4) T5 (Type 5)	D (Dimmable) M (Motion Sensor) SP (Photocell Std) SC (Shorting Cap)

*L80 & L70 values at 25° C are calculated TM-21 based on LM-80 and in-situ luminaire testing. In accordance with IESNA TM-21-11, projected values represent interpolated value based on time durations that are within six times (6x) the IESNA LM-80-08 total test duration (in hours) for the device under testing (DUT) i.e. packaged LED chips. In accordance with IESNA TM-21-11, calculated values represent time durations that exceed six times (6x) the IESNA LM-80-08 total test duration (in hours) for the device under testing (DUT) i.e. packaged LED chips.
**Motion sensor not available with 480 (200-480V) model.

For more info, visit www.sigmaluminous.com | 23000 W. Industrial Dr., Ste. B | St. Clair Shores, MI 48080 | 866.755.3563



PROPOSED SITE LIGHTING FIXTURE SCHEDULE						
SYMBOL	DESCRIPTION	QUANTITY	LLF	COLOR	MOUNTING	CONFIG. CATALOG NO. & NOTES
■	SIGMA LUMINOUS, LUMINOUS ZONE LED SHOEBOX, 4TH GENERATION, 150W POWER PACKAGE, TYPE III OPTICS	33	0.90	4000K	30'-0" MOUNTING HEIGHT, POLE MOUNTED	1 FIXTURE ZONE-04-150W-UNV-40K T3

CALCULATED LIGHTING ILLUMINANCE LEVELS (FOOT CANDLES)					
	AVERAGE	MAX	MIN	AVG/MIN	MAX/MIN
PARKING LOT	1.73	4.6	0.4	4.33	11.50

ENGINEER
V3 COMPANIES
3500 SNOUFFER ROAD, STE. 225
COLUMBUS, OHIO 43235
PHONE: 614-761-1661
FAX: 614-761-1328
CONTACT: ANDREW GARDNER, P.E.
E-MAIL: AGARDNER@V3CO.COM

ARCHITECT
HARPER ARCHITECTURAL STUDIO
HARPER ARCHITECTS, LLC.
105 COMMERCE PARK DRIVE, #A
WESTERVILLE, OHIO 43082
PHONE: (614) 895-2050 / FAX: (614) 895-2054
CONTACT: SCOTT R. HARPER, AIA, NCARB
E-MAIL: SCOTT@HARPERAE.COM

DEVELOPER/OWNER
THE STONEHENGE COMPANY
147 N. HIGH STREET
COLUMBUS, OHIO 43230
PHONE: (614) 509-9000
CONTACT: DOUG ERVIN
E-MAIL: DOUG@STONEHENGE-COMPANY.COM



PROJECT NO.: 211084
PROJECT MANAGER: MJR
DESIGNED BY: JRR
DRAWN BY: JRR

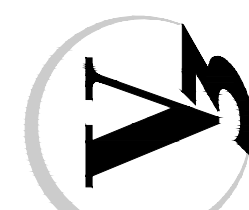
PHOTOMETRIC PLAN

ELLIOTT PARC

COLUMBUS

S04

3500 Snouffer Road,
Suite 225
Columbus, OH 43235
614.761.1661 phone
www.v3co.com



DRAWING NO.

EX-2

MORSE ROAD PROJECT-COLOR MATRIX

BUILDING UPPER COLORS



EXTERIOR ELEVATION - FRONT (BUILDINGS A,D,E,F,G)
SCALE: 1/8" = 1'-0"

○ CODED ARCHITECTURAL NOTES:

- 1. BRICK
- 2. ALUMINUM COPINGS
- 3. BOARD AND BATTEN CEMENT BOARD PANELS AND TRIM
- 4. CEMENT BOARD SIDING AND TRIM
- 5. BRONZE ALUMINUM RAILINGS
- 6. BRONZE ALUMINUM DOORS
- 7. WINDOWS PELLA DOUBLE HUNG MATTE BLACK
- 8. STEEL CANOPY OVER ENTRY DOORS



EXTERIOR ELEVATION - BACK (BUILDINGS A,D,E,F,G)
SCALE: 1/8" = 1'-0"



EXTERIOR ELEVATION - SIDE (BUILDINGS A,D,E,F,G)
SCALE: 1/8" = 1'-0"



EXTERIOR ELEVATION - SIDE (BUILDINGS A,D,E,F,G)
SCALE: 1/8" = 1'-0"

DATE INT. REVISIONS

BUILDING ELEVATIONS - 24 UNIT (1 & 2 BEDROOM)

Harper Architectural Studio, LLC

424A Beecher Rd.
Baltimore, MD 21206
PH: (410) 865-2050

SHEET DESIGNATION:

A4

DATE: SHEET #

COPYRIGHT © 2022 HARPER ARCHITECTURAL STUDIO

MORSE ROAD PROJECT-COLOR MATRIX

BUILDING UPPER COLORS



EXTERIOR ELEVATION - FRONT (BUILDINGS B,C,I,H)
SCALE: 1/8" = 1'-0"

○ CODED ARCHITECTURAL NOTES:

- 1. BRICK
- 2. ALUMINUM COPINGS
- 3. BOARD AND BATTEN CEMENT BOARD PANELS AND TRIM
- 4. CEMENT BOARD SIDING AND TRIM
- 5. BRONZE ALUMINUM RAILINGS
- 6. BRONZE ALUMINUM DOORS
- 7. WINDOWS PELLA DOUBLE HUNG MATTE BLACK
- 8. STEEL CANOPY OVER ENTRY DOORS



EXTERIOR ELEVATION - BACK (BUILDINGS B,C,I,H)
SCALE: 1/8" = 1'-0"



EXTERIOR ELEVATION - SIDE (BUILDINGS B,C,I,H)
SCALE: 1/8" = 1'-0"



EXTERIOR ELEVATION - SIDE (BUILDINGS B,C,I,H)
SCALE: 1/8" = 1'-0"

#	DATE	INT.	REVISIONS

BUILDING ELEVATIONS - 24 UNIT (1 & 2 BEDROOM)

Harper Architectural Studio, LLC

424A Beecher Rd.
Baltimore, MD 21206
Ph: (410) 895-2050

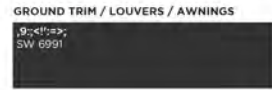
SHEET DESIGNATION

A3

DATE: SHEET #

MORSE ROAD PROJECT - COLOR MATRIX

UPPER BUILDING COLORS



LOWER BRICK FACADE



SAMPLE WINDOW DETAIL



EXTERIOR ELEVATION - FRONT (BUILDING J)
SCALE: 1/8" = 1'-0"

○ CODED ARCHITECTURAL NOTES:

- 1. BRICK
- 2. ALUMINUM COPINGS
- 3. BOARD AND BATTEN CEMENT BOARD PANELS AND TRIM
- 4. CEMENT BOARD SIDING AND TRIM
- 5. BRONZE ALUMINUM RAILINGS
- 6. BRONZE ALUMINUM DOORS
- 7. WINDOWS PELLA DOUBLE HUNG MATTE BLACK
- 8. STEEL CANOPY OVER ENTRY DOORS



EXTERIOR ELEVATION - BACK (BUILDING J)
SCALE: 1/8" = 1'-0"



EXTERIOR ELEVATION - SIDE (BUILDING J)
SCALE: 1/8" = 1'-0"



EXTERIOR ELEVATION - SIDE (BUILDING J)
SCALE: 1/8" = 1'-0"

DATE INT. REVISIONS

BUILDING ELEVATIONS - 24 UNIT (2 BEDROOM)

Harper Architectural Studio, LLC

4244 Beecher Rd
Denver, CO 80230
PH: (303) 892-2050

SHEET DESIGNATION:

A7

DATE: SHEET #

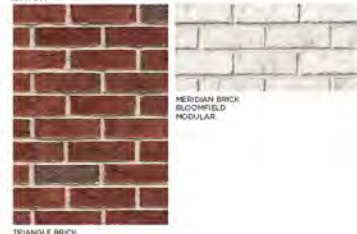
COPYRIGHT © 2022 HARPER ARCHITECTURAL STUDIO

MORSE ROAD PROJECT-COLOR MATRIX

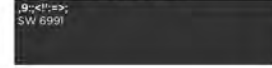
UPPER BUILDING COLORS



BRICK



(4/7/03151NS-62&31510&S-/)1&1



4 1/2 S43



○ CODED ARCHITECTURAL NOTES:

1. BRICK
2. ALUMINUM COPINGS
3. BOARD AND BATTEN CEMENT BOARD PANELS AND TRIM
4. CEMENT BOARD SIDING AND TRIM
5. BRONZE ALUMINUM RAILINGS
6. BRONZE ALUMINUM DOORS
7. WINDOWS PELLA DOUBLE HUNG MATTE BLACK
8. STEEL CANOPY OVER ENTRY DOORS



EXTERIOR ELEVATION - FRONT (BUILDING K)

SCALE: 1/8" = 1'-0"



EXTERIOR ELEVATION - FRONT (BUILDING K)

SCALE: 1/8" = 1'-0"



EXTERIOR ELEVATION - SIDE (BUILDING K)

SCALE: 1/8" = 1'-0"



EXTERIOR ELEVATION - SIDE (BUILDING K)

SCALE: 1/8" = 1'-0"

DATE INT. REVISIONS

BUILDING ELEVATIONS - CLUBHOUSE AND 1 BEDROOMS

Harper Architectural Studio, LLC

424A Beecher Rd.
Bloomington, IL 61710
PH: (815) 895-2050

SHEET DESIGNATION:

A10

DATE: SHEET #

COPYRIGHT © 2022 HARPER ARCHITECTURAL STUDIO