



# GAHANNA MUNICIPAL COMPLEX

CO-CREATE THE FUTURE

## PROJECT OBJECTIVES

1. INVITING & APPROACHABLE
2. CREATE A CLEAR CIVIC PRESENCE
3. COMMUNITY & SERVICE FOCUSED
4. EFFICIENT IN PLANNING
5. ALLOW FOR FUTURE EXPANSION
6. SAFE & SECURE
7. MEETS ADDITION / RENOVATION SQ FT GOALS
8. MEETS PROGRAM GOALS
9. BUILDING RE-BRANDING / UNIQUE IDENTITY
10. DAYLIGHTING / QUALITY OF INTERIOR SPACES





# GAHANNA MUNICIPAL COMPLEX

CO-CREATE THE FUTURE



February 10, 2025







## January Updates

### Exterior

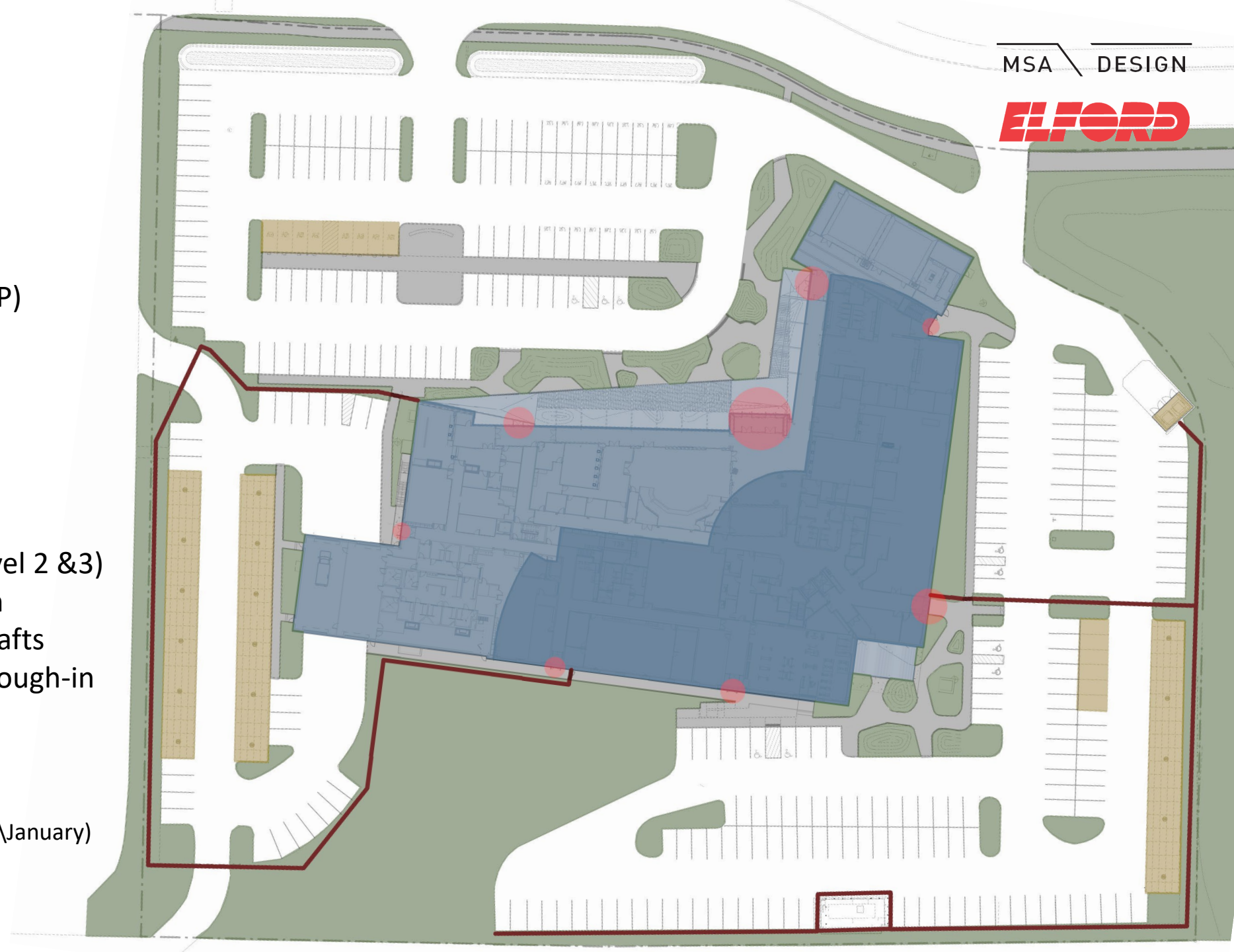
- Electrical Service Upgrade (AEP)
- Temporary Heating Startup
- Exterior Metal Framing
- Structural Steel Completed
- Begin Masonry & Curtain Wall

### Interior

- Drywall Install & Finishing (Level 2 &3)
- Exterior Spray Foam Insulation
- Fireproofing of Mechanical Shafts
- Network\Audio Video Cable Rough-in

### Schedule

- 34% Complete Based on Time
- 12 Weather Days (Late December\January)





## January Updates

### Exterior

- Electrical Service Upgrade (AEP)
- Temporary Heating Startup
- Exterior Metal Framing
- Structural Steel Completed
- Begin Masonry & Curtain Wall

### Interior

- Drywall Install & Finishing (Level 2 & 3)
- Exterior Spray Foam Insulation
- Fireproofing of Mechanical Shafts
- Network\Audio Video Cable Rough-in

### Schedule

- 34% Complete Based on Time
- 12 Weather Days (Late December\January)







- Drywall Install & Finishing (Late Dec)
- Exterior Spray Foam Insulation
- Fireproofing of Mechanical Shaft
- Network\Audio Video Cable Routing

## Schedule

- 34% Complete Based on Time
- 12 Weather Days (Late December)







## Interior

- Drywall
- Exterior
- Fireproof
- Network

## Schedule

- 34% Co
- 12 Wea





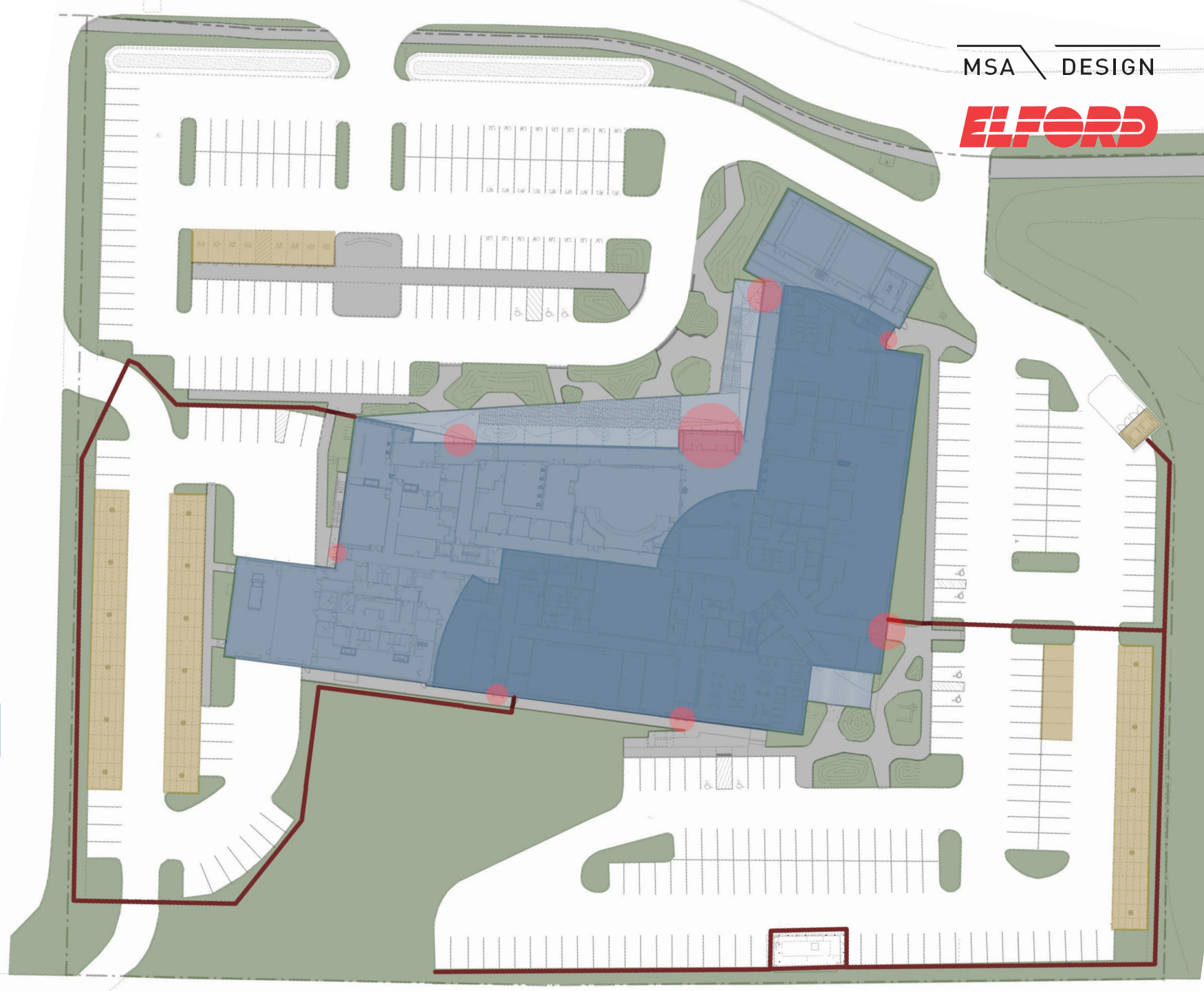
## January Updates

### Summary

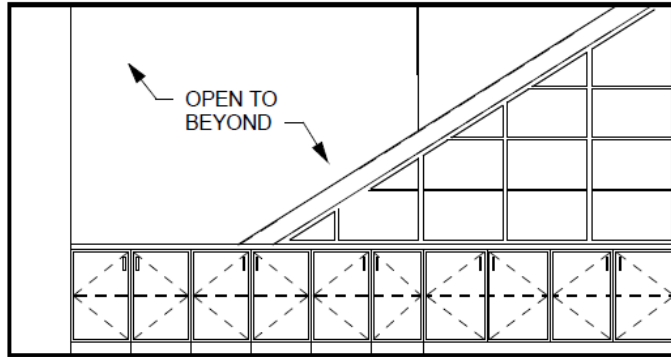
GMP1	\$20,237,613
GMP2	\$39,300,242
Total	\$59,627,855
Invoiced (37%)	\$21,880,803

### Budgeted Allowance & Contingencies

Allowances (15.5%)	\$1,054,700
Contingencies (8.6%)	\$3,722,194
Total	\$4,776,894
Approved (10.1%)	\$484,359

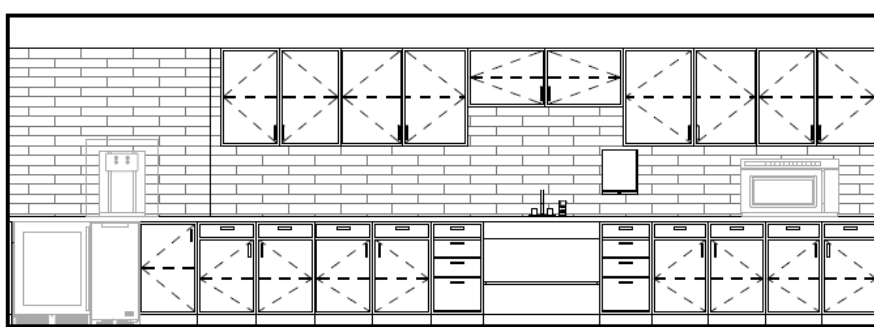






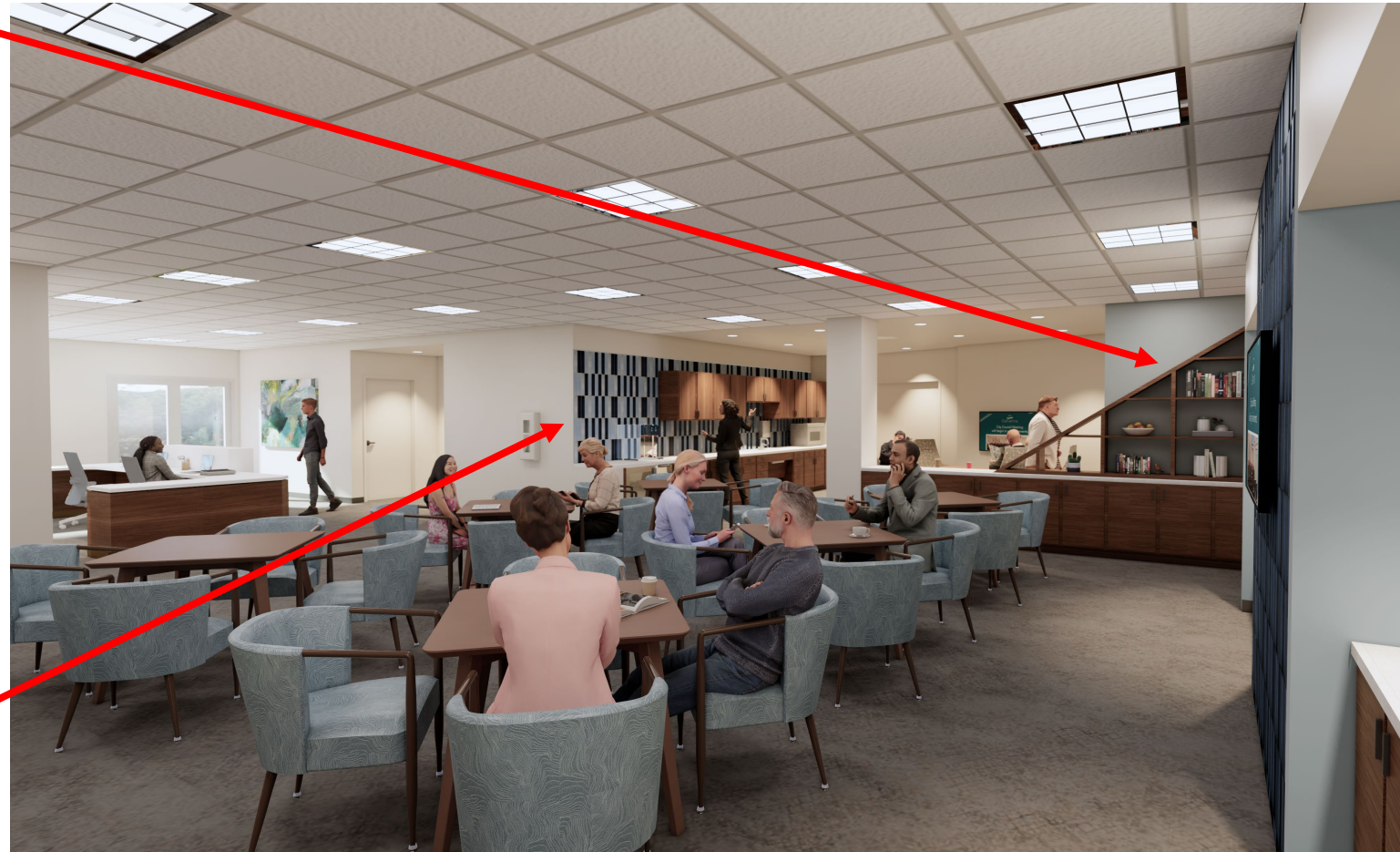
**103 SENIOR LOUNGE PLAN N SIDE A**

1/4" = 1'-0"



**103 SENIOR LOUNGE PLAN W**

1/4" = 1'-0"



Senior Lounge – Looking North-West



Early 2026

# GAHANNA MUNICIPAL COMPLEX

CO-CREATE THE FUTURE



MSA

DESIGN



February 10, 2025