



Division of Engineering
City of Gahanna
200 S. Hamilton Road
Gahanna, Ohio 43230
Attention: Karl Wetherholt, P.E

Date: August 12th, 2011

Re: Proposal for Additional Professional Engineering & Surveying Services for the **Gahanna Woods Wetland Ponds** project.

Dear Karl:

WatCon Consulting Engineers and Surveyors, L.L.C (Watcon) is pleased to provide you a Proposal for the Additional Professional Engineering and Surveying Services for the project listed above.

Our proposed Lump Sum Fee for these additional Professional Engineering and Surveying Services will be six dollars (**\$6000**). The Lump Sum Fee will provide the following Professional Services.....

- Revised Grading plan to reflect the pools to be deeper and tie existing contours @N.W corner and north side of park entrance. (\$1500)
- New Bridge Design. (\$2,000). No soil borings will be required.
- Plant list & details to eliminate fall seeding plan. (\$1,000). Work with Troy Euton and Bill Lobeck together to develop plan.
- Additional topo in the N.W corner and north of existing drive to design new pond relocation and north landscaping mound. (\$1500).

Additional services, above the Comprehensive Scope of services will be charged hourly at the rates outlined in **Exhibit A**. Reimbursable costs are considered print costs, mileage, courier service, survey stakes, and color copies. Mileage will be charged at the current IRS rate. Anticipated reimbursable costs are included in the Lump Sum Fee.

83 Shull Avenue

Gahanna, Ohio 43230

614.414.7979

fax: 614.414.7980

James T. Watkins

P.E., M.B.A., Principal

jim@watconeng.com


The Consultant shall maintain insurance coverage with a qualified insurance company for duration of the project. Coverage shall be in amounts not to exceed the following limits...

	Statutory Limit
Workman's Compensation	
General Liability	\$2,000,000 per occurrence
Employers Liability	\$2,000,000 per occurrence
Automobile Liability	\$2,000,000 per occurrence
Professional Liability	\$1,000,000 per claim

If requested, a copy of the Certificate of Insurance shall be provided to the Client.

The project will be invoiced monthly.

Sincerely,



James T. Watkins, P.E., M.B.A

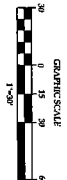
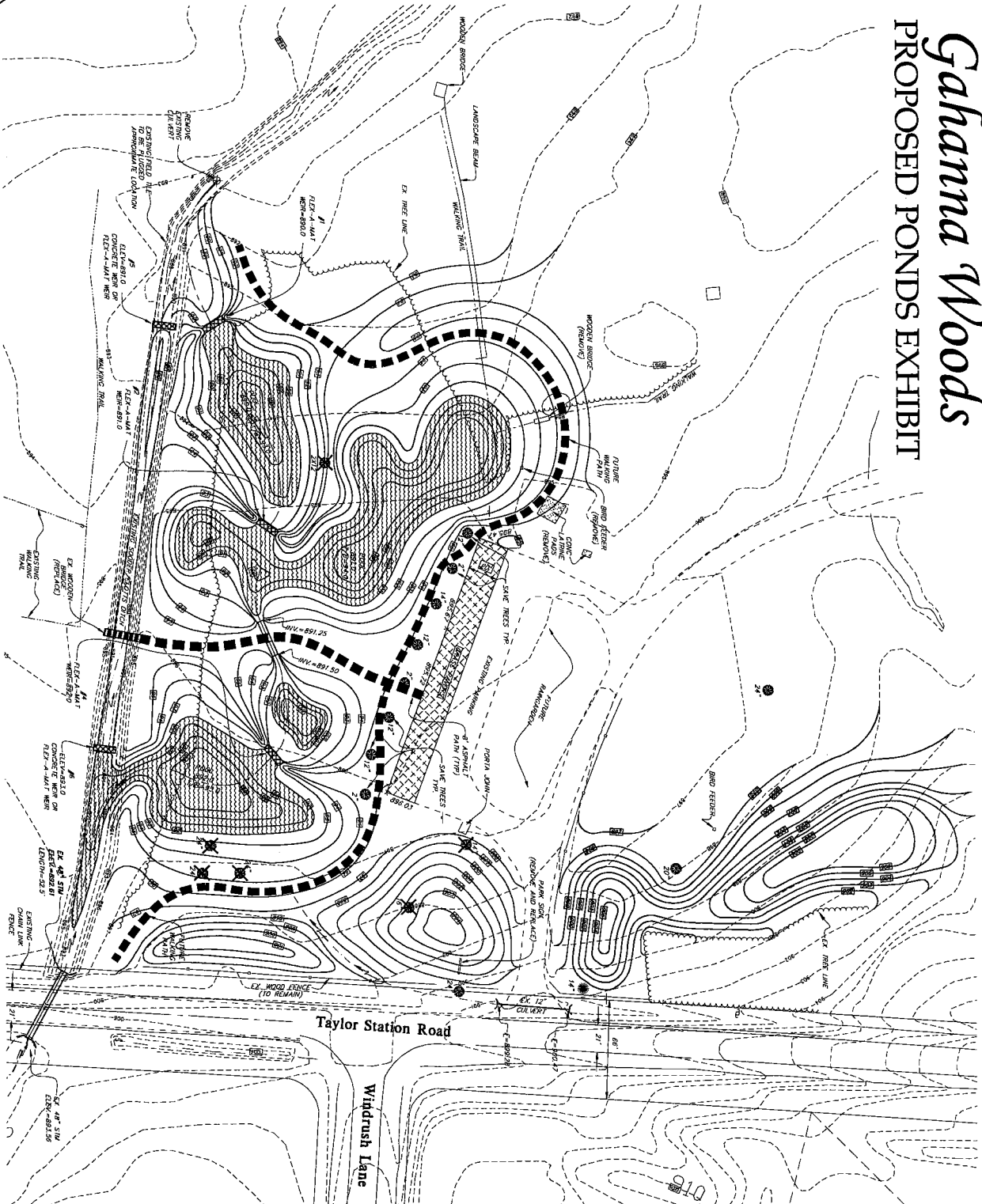
Principal

WatCon Consulting Engineers & Surveyors, L.L.C

Gahanna Woods

PROPOSED PONDS EXHIBIT

SITE PLAN FOR:



DATE: AUGUST 27, 2011

Prepared By



CONSULTING ENGINEERS & SURVEYORS
Gahanna, Ohio 43230
Ph. (614) 414-7375

EXHIBIT A

WATCON CONSULTING ENGINEERS & SURVEYORS, L.L.C
Professional Services
Fee Rate Schedule

WATCON SERVICES RATES

Engineering.....	\$90/hr
Surveying.....	\$90/hr
Construction Administration.....	\$90/hr
Inspections.....	\$65/hr
Technician.....	\$70/hr
Administrative Assistant.....	\$45/hr
1 Man Field Crew	\$100/hr
2 Man Field Crew	\$135/hr