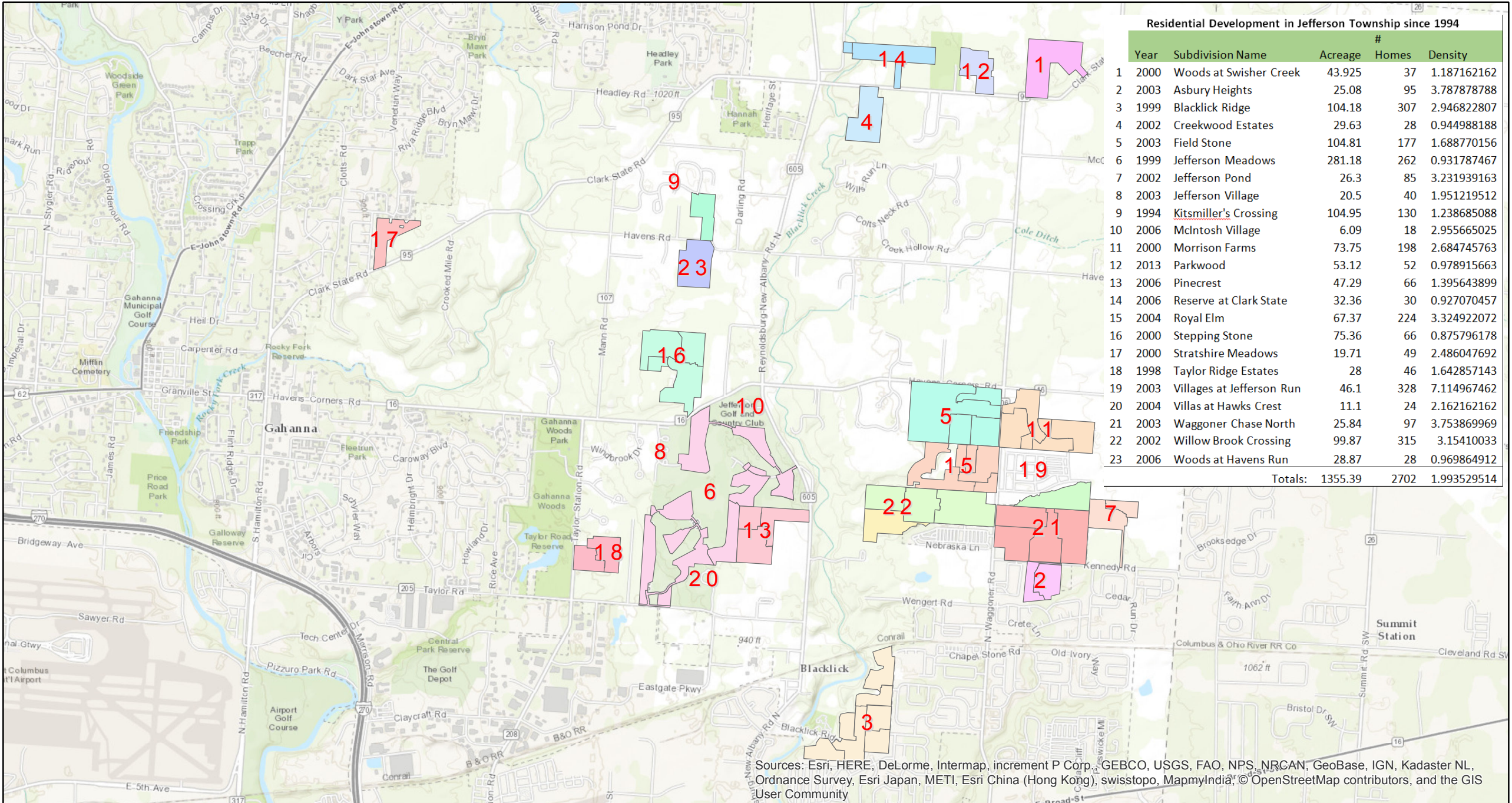


Jefferson Township



Residential Development in Jefferson Township since 1994

Year	Subdivision Name	Acreage	# Homes	Density
1	2000 Woods at Swisher Creek	43.925	37	1.187162162
2	2003 Asbury Heights	25.08	95	3.787878788
3	1999 Blacklick Ridge	104.18	307	2.946822807
4	2002 Creekwood Estates	29.63	28	0.944988188
5	2003 Field Stone	104.81	177	1.688770156
6	1999 Jefferson Meadows	281.18	262	0.931787467
7	2002 Jefferson Pond	26.3	85	3.231939163
8	2003 Jefferson Village	20.5	40	1.951219512
9	1994 Kitsmiller's Crossing	104.95	130	1.238685088
10	2006 McIntosh Village	6.09	18	2.955665025
11	2000 Morrison Farms	73.75	198	2.684745763
12	2013 Parkwood	53.12	52	0.978915663
13	2006 Pinecrest	47.29	66	1.395643899
14	2006 Reserve at Clark State	32.36	30	0.927070457
15	2004 Royal Elm	67.37	224	3.324922072
16	2000 Stepping Stone	75.36	66	0.875796178
17	2000 Stratshire Meadows	19.71	49	2.486047692
18	1998 Taylor Ridge Estates	28	46	1.642857143
19	2003 Villages at Jefferson Run	46.1	328	7.114967462
20	2004 Villas at Hawks Crest	11.1	24	2.162162162
21	2003 Waggoner Chase North	25.84	97	3.753869969
22	2002 Willow Brook Crossing	99.87	315	3.15410033
23	2006 Woods at Havens Run	28.87	28	0.969864912
Totals:		1355.39	2702	1.993529514

Sources: Esri, HERE, DeLorme, Intermap, increment P Corp., GEBCO, USGS, FAO, NPS, NRCAN, GeoBase, IGN, Kadaster NL, Ordnance Survey, Esri Japan, METI, Esri China (Hong Kong), swisstopo, MapmyIndia, © OpenStreetMap contributors, and the GIS User Community