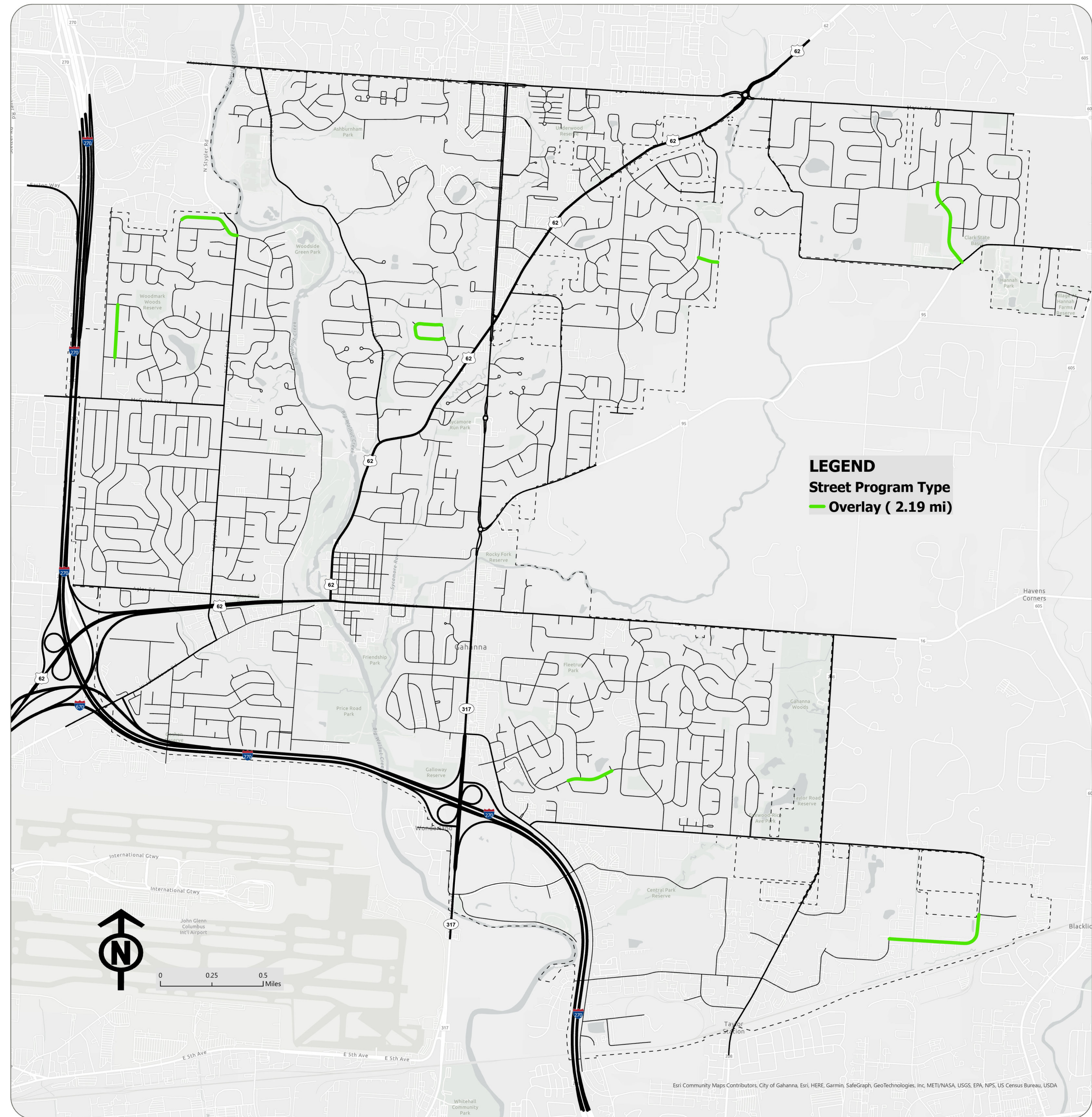


## 2024 Street Program ST-1090

### OVERLAY & SIDEWALK MAINTENANCE

- BEAVER BROOK DR (BARDEN CT TO HUNTERS RUN (WEST))
- CHALLIS SPRINGS DR (HARRISON POND DR (4' S of LP) to CLARK STATE RD (Edge line)
- CHERRYSTONE DR N & S (TRAPP DR (N - 9' W of Ramp CL) to TRAPP DR (S - 64' W of LP)
- EASTGATE PKWY (BLATT BLVD (ECR) to EASTGATE PARKWAY (LP 20' S of Niagara Drive)
- LANG DR (RIVA RIDGE BLVD (20' E from Ramp CL) to BRYN MAWR DR (18' S from inlet CL)
- MISTLE TOE ST (MOSS OAK AVE TO THISTLE AVE)
- SANDBURR (STYGLER (10' W of inlet CL) to WINDBOURNE (Street sign at SANDBURR))



Eri Community Maps Contributors, City of Gahanna, Esri, HERE, Garmin, SafeGraph, GeoTechnologies, Inc, METI/NASA, USGS, EPA, NPS, US Census Bureau, USDA

NOTE: This map is a resource to be used for general information purposes only. The City of Gahanna shall assume no liability for any errors, omissions, or inaccuracies in the information provided. All GIS data layers are referenced in the Ohio State Plane Coordinate System, Horizontal - North American Datum (NAD) 83 (95) Vertical - North American Datum Vertical Datum (NAVD) 88, Units - Surveyors Feet. All data has been developed from public records that are constantly undergoing change and is not warranted for content, completeness, or accuracy. The City of Gahanna does not warrant, guarantee or represent the data to be fit for a particular use or purpose.