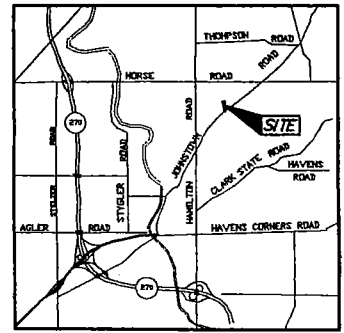
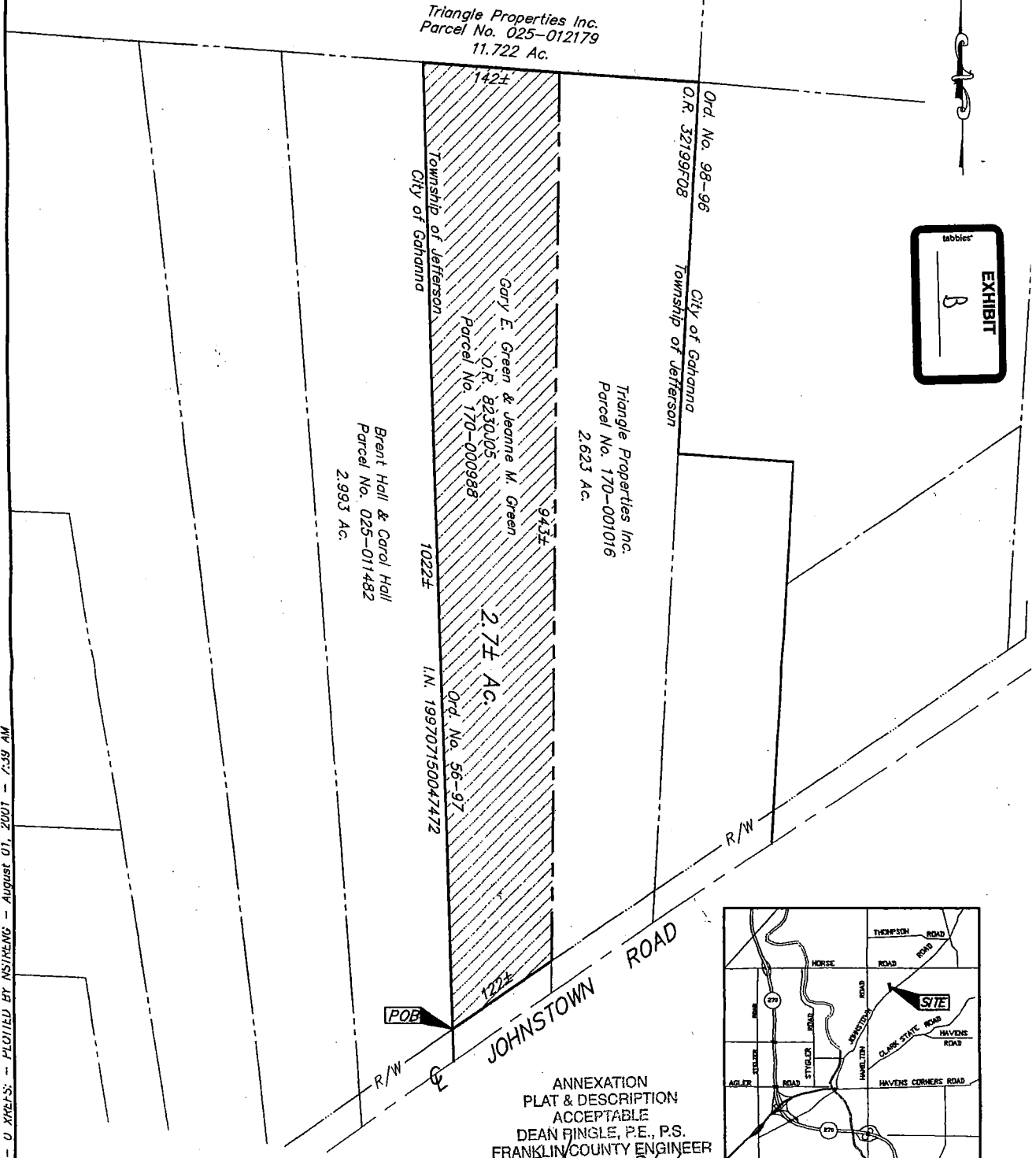


SCALE 1" = 100'



LOCATION MAP
No Scale

ANNEXATION
PLAT & DESCRIPTION
ACCEPTABLE
DEAN RINGLE, P.E., P.S.
FRANKLIN COUNTY ENGINEER
By *Dud* Date *8/7/01*



LEGEND
 _____ EXISTING CITY OF GAHANNA CORP. LINE
 - - - - - PROPOSED CITY OF GAHANNA CORP. LINE
 [Hatched Box] AREA TO BE ANNEXED

ANNEX No _____ ORD No _____
PROPOSED ANNEXATION OF 2.7± ACRES
TO THE
CITY OF GAHANNA
FROM
JEFFERSON TOWNSHIP, FRANKLIN COUNTY, OHIO
QUARTER TOWNSHIP 2, TOWNSHIP 1, RANGE 16
UNITED STATES MILITARY LANDS
DATE JULY 2001 SCALE 1" = 100'

C:\PROJ\01\2001\0999\01\DWG\UT0999ANNX.DWG - U XREFS - PLOTTED BY NSTHENG - August 01, 2001 - 7:38 AM