

GENERAL NOTES:

- A. REFER TO PROJECT MANUAL FOR ADDITIONAL REQUIREMENTS.
- B. REFER TO PRE-ENGINEERED METAL BUILDING DRAWINGS FOR ADDITIONAL REQUIREMENTS.
- C. REFER TO MECHANICAL / ELECTRICAL PLAN FOR SYSTEM TYPES AND LOCATIONS.
- D. REFER TO SITE DEVELOPMENT PLANS FOR ADDITIONAL REQUIREMENTS.

KEY NOTES:

- 1 EXTERIOR INSULATION AND FINISH SYSTEM (E.I.F.S.): REFER TO EXTERIOR FINISH SCHEDULE.
- 1A EXTERIOR INSULATION AND FINISH SYSTEM (E.I.F.S.) ACCENT BAND: REFER TO FINISH SCHEDULE AND WALL SECTIONS.
- 2 MASONRY WALL CONSTRUCTION (ACCENT): REFER TO EXTERIOR FINISH SCHEDULE AND WALL SECTIONS.
- 2A MASONRY WALL CONSTRUCTION (FIELD): REFER TO EXTERIOR FINISH SCHEDULE AND WALL SECTIONS.
- 3 PRE-ENGINEERED METAL BUILDING SHEET METAL STANDING SEAM ROOF (BEYOND): BY PRE-ENGINEERED METAL BUILDING COMPANY.
- 4 PRE - FINISHED METAL CAP FLASHING: REFER TO EXTERIOR FINISH SCHEDULE.
- 5 PRE - ENGINEERED METAL CAP FLASHING: (AT EIFS) COLOR SHALL BE FIELD PAINTED SW 6871 POSITIVE RED.
- 6 PRE - ENGINEERED METAL BUILDING INTERNAL GUTTER AND THROUGH WALL SCUPPER SYSTEM: PRE - FINISHED, COLOR SHALL MATCH MASONRY FIELD COLOR.
- 7 CONCRETE MASONRY UNIT (CMU): SPLIT FACE HEAD AND JAMB UNITS.
- 8 LINE OF ROOF: DASHED LINE INDICATES LINE OF ROOF BEYOND WITH SLOPE OF 1/4" PER FOOT.
- 9 SIGN: APPROXIMATE OUTLINE OF SIGN. PROVIDE BLOCKING AS REQUIRED FOR MOUNTING OF SIGN, COORDINATE WITH SIGN COMPANY FOR EXACT SIGN PLACEMENT. OWNER FURNISHED AND INSTALLED LOGO. REFER TO SIGN PACKET INFORMATION FOR FURTHER DETAIL.
- 10 ADDRESS NUMBERS: 6" VINYL BY CONTRACTOR. COLOR TO BE WHITE.
- 11 NOT USED
- 12 DOOR AND FRAME: FIELD PAINT (REFER TO EXTERIOR FINISH SCHEDULE.)
- 13 STOREFRONT: (REFER TO FLOOR PLAN FOR WINDOW TYPES.)
- 14 LINE OF FOUNDATION: (REFER TO FOUNDATION PLAN.)
- 15 STEEL BOLLARDS: (9) TYPICAL AT STOREFRONT (2) AT O.H. DOOR LOCATION. (REFER TO EXTERIOR FINISH SCHEDULE AND FOUNDATION PLAN.)
- 16 HOSE BIB: (REFER TO PLUMBING PLAN)
- 17 LIGHT FIXTURE: (REFER TO ELECTRICAL PLAN)
- 18 (NOT USED)
- 19 ROOF TOP UNIT (BEYOND): APPROXIMATE LOCATION (REFER TO MECHANICAL PLAN FOR EXACT LOCATION)
- 20 MECHANICAL WALL PENETRATIONS: PROVIDE FRAMING, FLASHING, AND SEALANT AS REQUIRED. (REFER TO M.E.P. SHEETS)
- 21 ROOF PIPING VENT(BEYOND): REFER TO DETAIL 5/A3.
- 22 PRE-FABRICATED METAL CANOPY SYSTEM: ANCHORED TO STRUCTURAL SYSTEM PER MANUFACTURER'S RECOMMENDATIONS. REFER TO WALL SECTIONS AND STRUCTURAL DRAWINGS. COORDINATE ROD LOCATIONS WITH SIGNAGE.
- 23 MASONRY CONTROL / EXPANSION JOINT: (MATCH MASONRY) PROVIDE SEALANT OVER 1/2" DIAMETER FOAM BACKER ROD. REFER TO STRUCTURAL DRAWINGS.
- 24 RUSTICATION JOINT: REFER TO DETAIL 6/A3.
- 25 PRE - FINISHED SHEET CONDUCTOR HEAD AND DOWNSPOUT SYSTEM: PRE - FINISHED, COLOR SHALL MATCH MASONRY FIELD COLOR.



CORPORATE OFFICES
233 SOUTH PATTERSON
SPRINGFIELD, MISSOURI 65802
(417) 862-2674 TELEPHONE

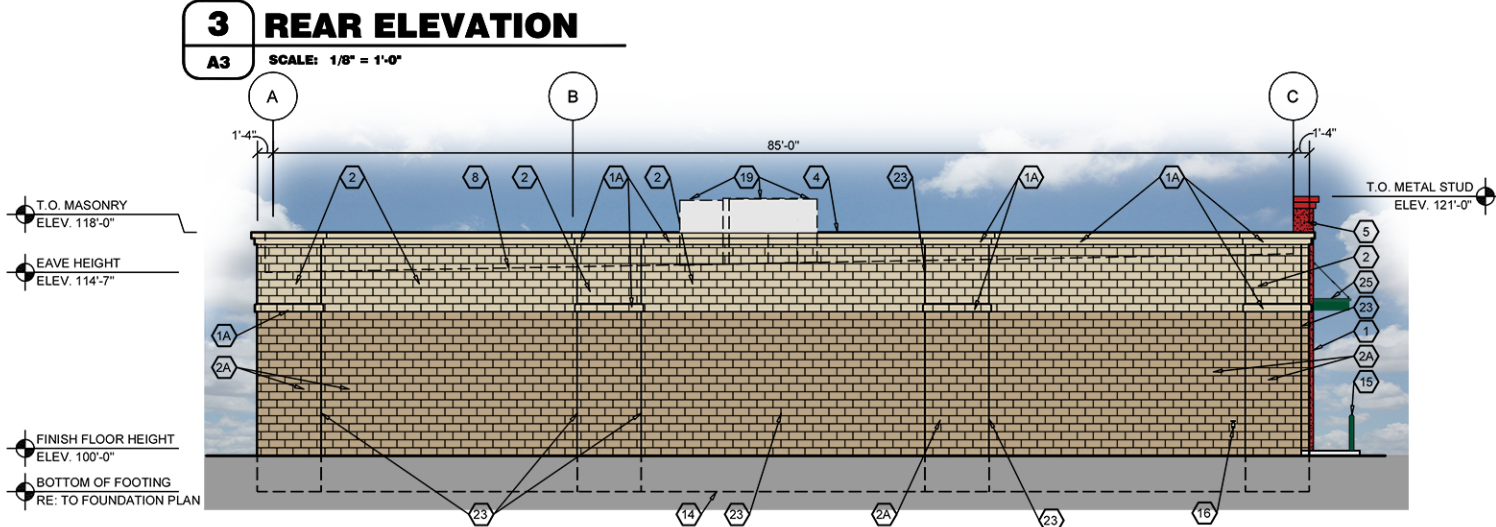
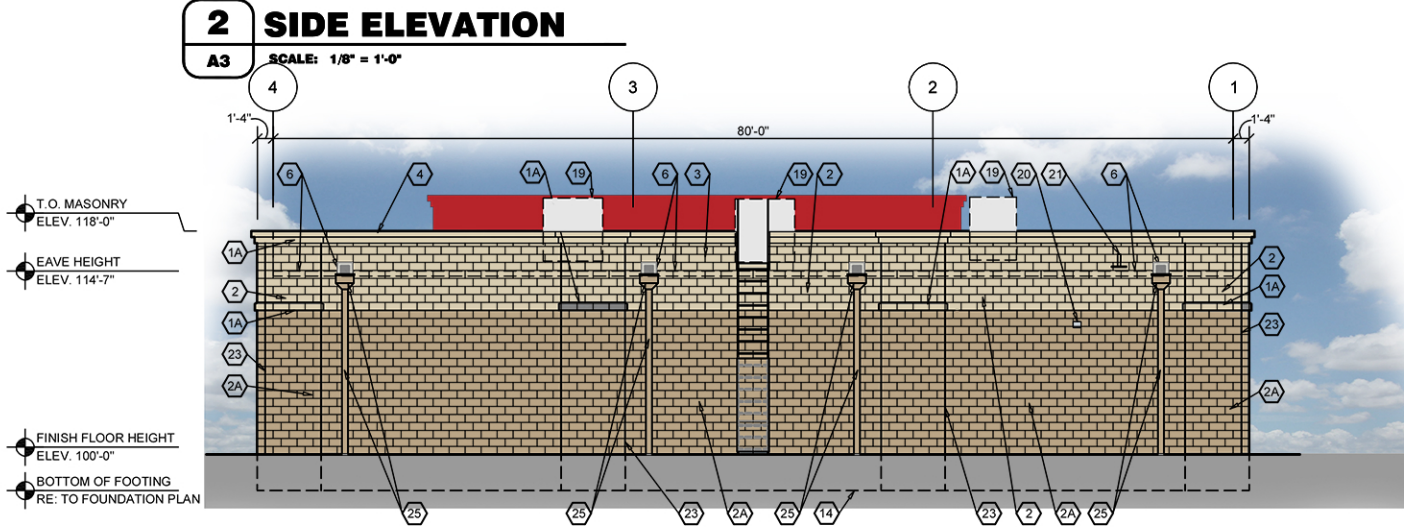
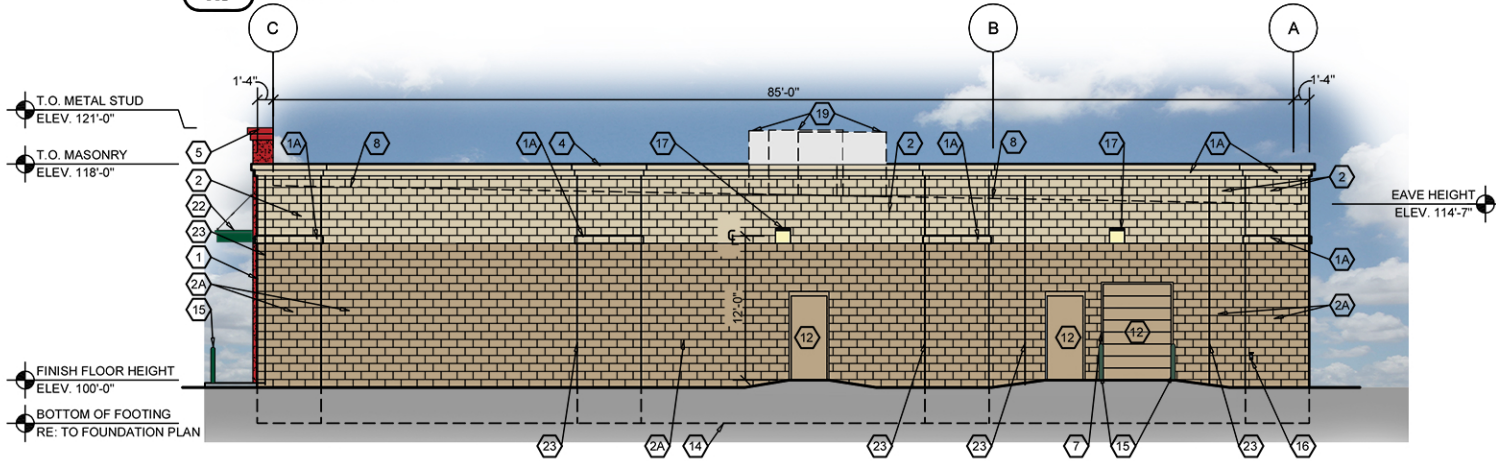
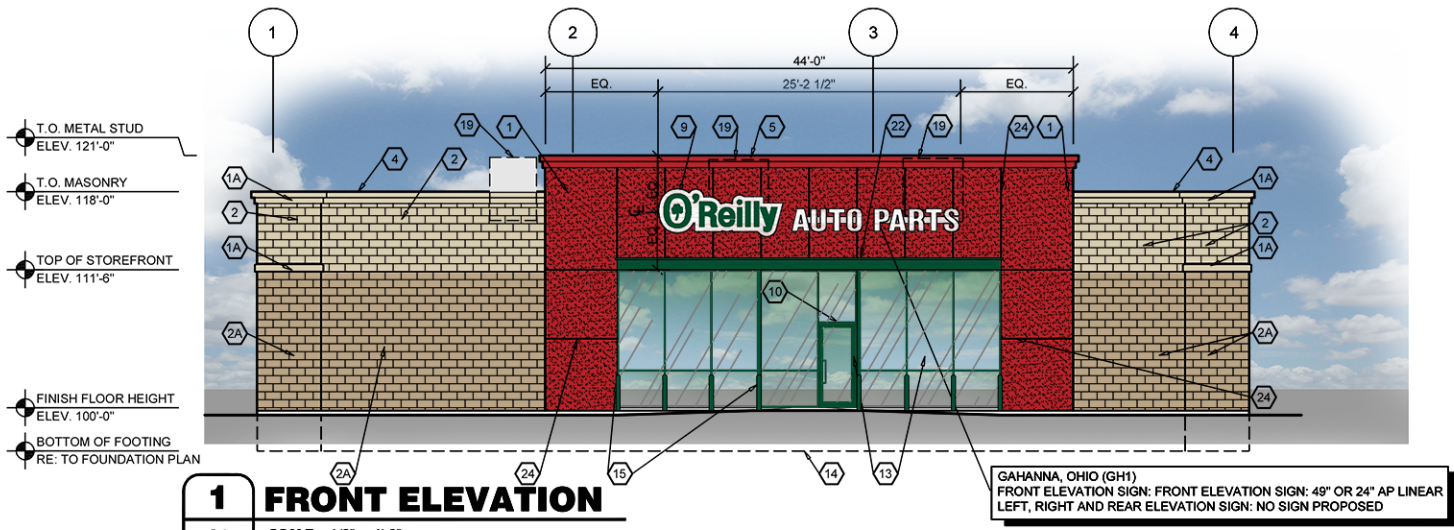
PROJECT:
NEW O'REILLY AUTO PARTS STORE
403 AGLER ROAD
GAHANNA, OHIO

EXTERIOR ELEVATIONS

Buddy D. Webb
Architect - Consultant
3057 EAST CAIRO
SPRINGFIELD, MISSOURI 65802
(417) 877-1385 TELEPHONE
(417) 877-9736 FAX

DRAWN BY: EN LG, BDW
CHECKED BY:
DATE: 06/04/15
REVISION: A1 AD. NO. 1 (09/04/15)
PROJECT NUMBER: GH1
SHEET NUMBER

A3



EXTERIOR FINISH SCHEDULE		
TYPE:	COMPANY TYPE:	COLOR:
STANDARD CONCRETE MASONRY UNIT (C.M.U.) SPLIT FACE (8" X 8" X 16" NOM.) *PROVIDE FULL 8" FACE AT ALL CORNERS COURSE: RUNNING	PER LOCAL SUPPLIER	SHERWIN WILLIAMS PAINT (1) COAT S-W PREPRITE BLOCK FILLER B25W25 (NO LESS THAN 8 MILS) (2) COATS S-W CONFLEX XL SMOOTH ELASTOMERIC A5-400 (NO LESS THAN 5.7 MILS EACH COAT) COLD WEATHER APPLICATIONS: SHERWIN WILLIAMS PAINT (1) COAT S-W LOXON BLOCK SURFACER (NO LESS THAN 8 MILS) (2) COATS S-W ULTRACRETE SOLVENT BORNE SMOOTH B46 (NO LESS THAN 8 MILS EACH COAT OR 16 MILS TOTAL) ACCENT COLOR: EQUAL TO SOFTER TAN SW 6141 FIELD COLOR: EQUAL TO LATTE SW 6108 (INDICATED BY SHADING: )
EXTERIOR INSULATION AND FINISH SYSTEM (E.I.F.S.)	DRYVIT - OUTSULATION PLUS MD SANDBLAST FINISH	SW 6871 POSITIVE RED ORAP011030S WITH DRYVIT STRATOTONE HIGH PERFORMANCE COLORANT (FACTORY MIXED ONLY)
STOREFRONT (NO SUBSTITUTES)	EFCO	IVY
	KAWNEER	DARK IVY
	VISTA WALL	INTERSTATE GREEN
BOLLARDS	IN FIELD	SHERWIN WILLIAMS SW 6468 HUNT CLUB EXTERIOR SEMI-GLOSS LATEX
EXTERIOR DOORS OVERHEAD DOOR	IN FIELD	FACTORY PRIME FIELD PAINTED SW 6108 LATTE
SHEET METAL CAP FLASHING AT E.I.F.S.	BY METAL BUILDING MFG'R FIELD BROKEN FACTORY PRIME FIELD PAINTED	SHERWIN WILLIAMS SW 6871 POSITIVE RED (VERIFY MIX BELOW MATCHES E.I.F.S. COLOR) CLEAR COAT-DIAMOND CLAD CLEAR COAT URETHANE B65T105/B65V105/B65C105--3 COMPONENT
PRE - FINISHED SHEET METAL CAP FLASHING	BY METAL BUILDING MFG'R FIELD BROKEN	COOL BIRCH WHITE
SHEET METAL CONDUCTOR HEADS AND DOWNSPOUT	PER LOCAL SUPPLIER	PRE-FINISHED MATCH SHERWIN WILLIAMS "LATTE" SW 6108
EXTERIOR INSULATION AND FINISH SYSTEM (E.I.F.S.) ACCENT BAND	DRYVIT - OUTSULATION PLUS MD SANDBLAST FINISH	SHERWIN WILLIAMS COLOR: SW 6141 "SOFTER TAN"
PREFABRICATED METAL CANOPY	PER LOCAL SUPPLIER	POWDER COATED (MATCH SW 6468 "HUNT CLUB")