



Evans, Mechwart, Hambleton & Tilton, Inc.  
 Engineers • Surveyors • Planners • Scientists  
 5500 New Albany Road, Columbus, OH 43054  
 Phone: 614.775.4500 Toll Free: 888.775.3648  
 emht.com

# CONSERVATION EASEMENT

QUARTER TOWNSHIP 1, TOWNSHIP 1, RANGE 17

UNITED STATES MILITARY LANDS

CITY OF GAHANNA, COUNTY OF FRANKLIN, STATE OF OHIO

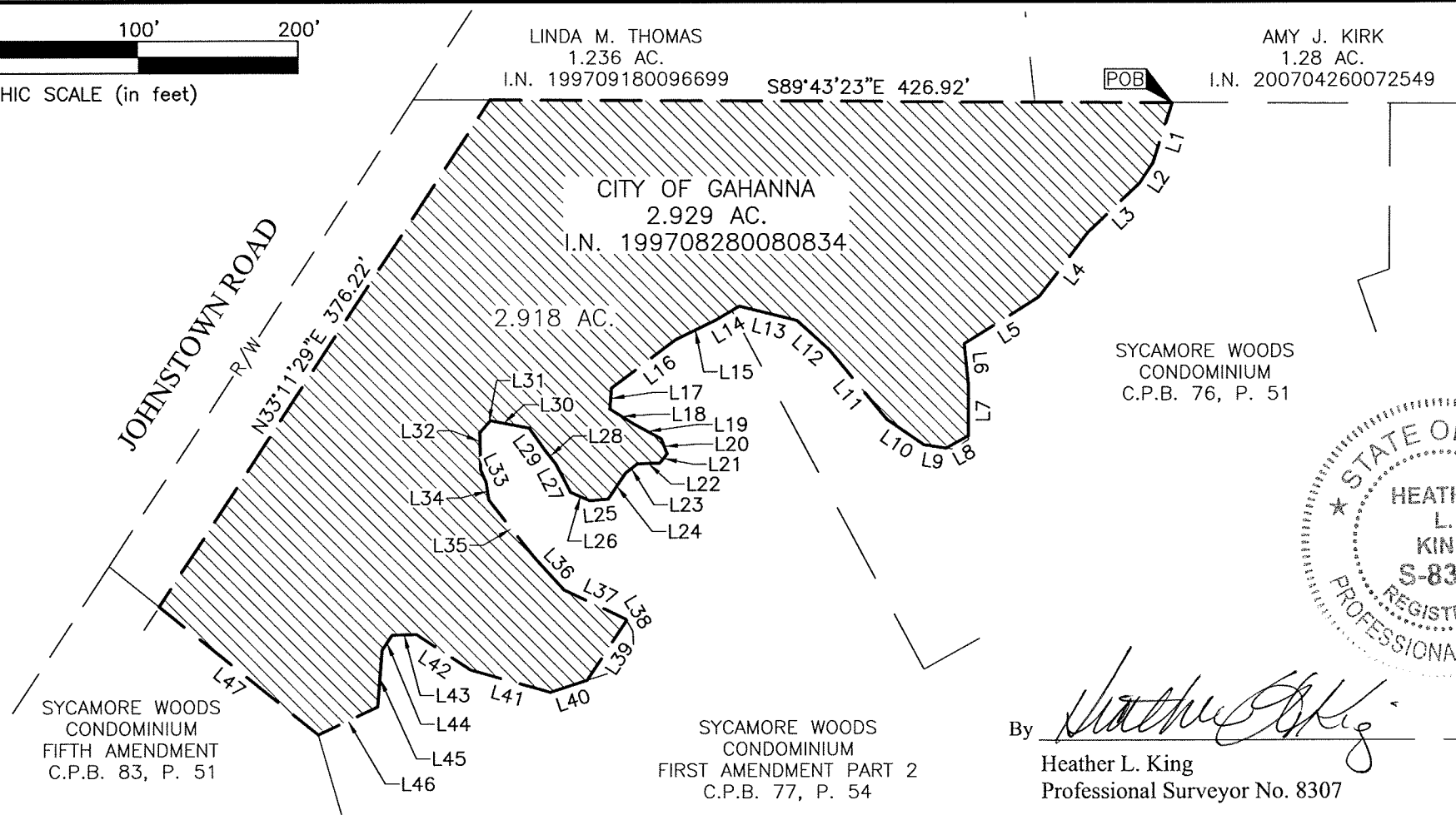
Date: September 6, 2013

Scale: 1" = 100'

Job No. 2012-0810



GRAPHIC SCALE (in feet)



By Heather L. King 9/6/13  
 Heather L. King Date  
 Professional Surveyor No. 8307



Evans, Mechwart, Hambleton & Tilton, Inc.  
 Engineers • Surveyors • Planners • Scientists  
 5500 New Albany Road, Columbus, OH 43054  
 Phone: 614.775.4500 Toll Free: 888.775.3648  
 emht.com

# CONSERVATION EASEMENTS

QUARTER TOWNSHIP 1, TOWNSHIP 1, RANGE 17

UNITED STATES MILITARY LANDS

CITY OF GAHANNA, COUNTY OF FRANKLIN, STATE OF OHIO

Date: September 6, 2013

Scale: 1" = 100'

Job No. 2012-0810

Line Table		
Line Number	Direction	Length
L1	S17°52'06"W	39.38'
L2	S33°42'39"W	14.94'
L3	S46°40'21"W	44.54'
L4	S37°33'49"W	50.81'
L5	S58°07'46"W	54.94'
L6	S05°42'54"E	26.03'
L7	S00°00'00"E	31.36'
L8	S61°16'33"W	15.89'
L9	N81°02'03"W	14.23'
L10	N55°44'02"W	27.60'
L11	N39°45'34"W	55.93'
L12	N48°02'06"W	27.89'
L13	N76°10'11"W	36.84'
L14	S59°38'26"W	17.42'
L15	S64°24'55"W	27.59'
L16	S53°01'58"W	49.96'

Line Table		
Line Number	Direction	Length
L17	S04°34'39"W	12.99'
L18	S58°11'33"E	17.69'
L19	S61°24'30"E	19.48'
L20	S21°15'56"E	10.00'
L21	S39°18'41"W	7.36'
L22	S87°52'50"W	14.01'
L23	S51°51'53"W	9.23'
L24	S34°08'07"W	19.40'
L25	S84°48'35"W	11.45'
L26	N66°31'04"W	13.00'
L27	N27°54'57"W	19.93'
L28	N37°53'48"W	11.82'
L29	N35°46'30"W	15.96'
L30	N79°10'04"W	24.81'
L31	S42°54'05"W	9.90'
L32	S01°16'26"E	23.32'

Line Table		
Line Number	Direction	Length
L33	S25°02'03"E	8.58'
L34	S08°08'11"E	10.99'
L35	S38°34'49"E	45.72'
L36	S42°43'54"E	27.50'
L37	S64°42'16"E	42.43'
L38	S30°59'01"E	1.09'
L39	S33°12'47"W	44.44'
L40	S72°01'54"W	24.29'
L41	N74°21'57"W	51.99'
L42	N56°32'04"W	40.39'
L43	S88°01'36"W	15.04'
L44	S33°42'39"W	11.21'
L45	S04°12'31"W	35.32'
L46	S64°54'46"W	40.93'
L47	N51°17'34"W	127.37'

**CONSERVATION EASEMENT  
2.918 ACRES**

Situated in the State of Ohio, County of Franklin, City of Gahanna, lying in Quarter Township 1, Township 1, Range 17, United States Military Lands, being on, over, and across that 2.929 acre tract conveyed to City of Gahanna by deed of record in Instrument Number 199708280080834, (all references are to the records of the Recorder's Office, Franklin County, Ohio) and being more particularly described as follows:

BEGINNING at the northerly common corner of said 2.929 acre tract and "Sycamore Woods Condominium", of record in Condominium Plat Book 76, Page 51, in the southerly line of that 1.28 acre tract conveyed to Amy J. Kirk by deed of record in Instrument Number 200704260072549;

Thence with the lines common to said 2.929 acre tract and "Sycamore Woods Condominium", the following courses and distances:

- South 17°52'06" West, a distance of 39.38 feet to a point;
- South 33°42'39" West, a distance of 14.94 feet to a point;
- South 46°40'21" West, a distance of 44.54 feet to a point;
- South 37°33'49" West, a distance of 50.81 feet to a point;
- South 58°07'46" West, a distance of 54.94 feet to a point;
- South 05°42'54" East, a distance of 26.03 feet to a point; and
- South 00°00'00" East, a distance of 31.36 feet to a point;

Thence South 61°16'33" West, across said 2.929 acre tract, a distance of 15.89 feet to a point in a line common to said 2.929 acre tract and "Sycamore Woods Condominium";

Thence with the southerly lines of said 2.929 acre tract, the northerly lines of said "Sycamore Woods Condominium", and "Sycamore Woods Condominium, First Amendment, Part 2", of record in Condominium Plat Book 77, Page 54, the following courses and distances:

- North 81°02'03" West, a distance of 14.23 feet to a point;
- North 55°44'02" West, a distance of 27.60 feet to a point;
- North 39°45'34" West, a distance of 55.93 feet to a point;
- North 48°02'06" West, a distance of 27.89 feet to a point;
- North 76°10'11" West, a distance of 36.84 feet to a point;
- South 59°38'26" West, a distance of 17.42 feet to a point;
- South 64°24'55" West, a distance of 27.59 feet to a point;
- South 53°01'58" West, a distance of 49.96 feet to a point;
- South 04°34'39" West, a distance of 12.99 feet to a point;
- South 58°11'33" East, a distance of 17.69 feet to a point;
- South 61°24'30" East, a distance of 19.48 feet to a point;
- South 21°15'56" East, a distance of 10.00 feet to a point;

**CONSERVATION EASEMENT  
2.918 ACRES**

- 2 -

South 39°18'41" West, a distance of 7.36 feet to a point;  
South 87°52'50" West, a distance of 14.01 feet to a point;  
South 51°51'53" West, a distance of 9.23 feet to a point;  
South 34°08'07" West, a distance of 19.40 feet to a point;  
South 84°48'35" West, a distance of 11.45 feet to a point;  
North 66°31'04" West, a distance of 13.00 feet to a point;  
North 27°54'57" West, a distance of 19.93 feet to a point;  
North 37°53'48" West, a distance of 11.82 feet to a point;  
North 35°46'30" West, a distance of 15.96 feet to a point;  
North 79°10'04" West, a distance of 24.81 feet to a point;  
South 42°54'05" West, a distance of 9.90 feet to a point;  
South 01°16'26" East, a distance of 23.32 feet to a point;  
South 25°02'03" East, a distance of 8.58 feet to a point;  
South 08°08'11" East, a distance of 10.99 feet to a point;  
South 38°34'49" East, a distance of 45.72 feet to a point;  
South 42°43'54" East, a distance of 27.50 feet to a point;  
South 64°42'16" East, a distance of 42.43 feet to a point; and  
South 30°59'01" East, a distance of 1.09 feet to a point;

Thence South 33°12'47" West, across said 2.929 acre tract, a distance of 44.44 feet to a point in a line common to said 2.929 acre tract and said "Sycamore Woods Condominium, First Amendment, Part 2";

Thence with the lines common to said 2.929 acre tract and "Sycamore Woods Condominium, First Amendment, Part 2, the following courses and distances:

South 72°01'54" West, a distance of 24.29 feet to a point;  
North 74°21'57" West, a distance of 51.99 feet to a point;  
North 56°32'04" West, a distance of 40.39 feet to a point;  
South 88°01'36" West, a distance of 15.04 feet to a point;  
South 33°42'39" West, a distance of 11.21 feet to a point;  
South 04°12'31" West, a distance of 35.32 feet to a point; and

South 64°54'46" West, a distance of 40.93 feet to a point at the common corner of said 2.929 acre tract, said "Sycamore Woods Condominium, First Amendment, Part 2, and

**CONSERVATION EASEMENT  
2.918 ACRES**

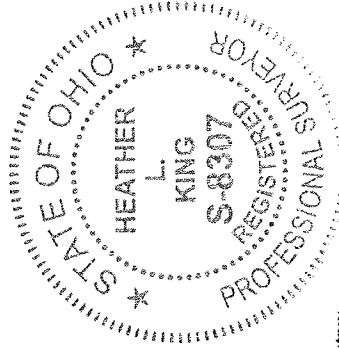
- 3 -

“Sycamore Woods Condominium, Fifth Amendment”, of record in Condominium Plat Book 83, Page 51;

Thence North 51°17'34" West, with the line common to said 2.929 acre tract and said “Sycamore Woods Condominium, Fifth Amendment”, a distance of 127.37 feet to a point;

Thence North 33°11'29" East, across said 2.929 acre tract, a distance of 376.22 feet to a point in the line common to said 2.929 and 1.236 acre tracts;

Thence South 89°43'23" East, with the line common to said 2.929 and 1.236 acre tracts, a distance of 426.92 feet to the POINT OF BEGINNING containing 2.918 acre, more or less.



EVANS, MECHWART, HAMBLETON & TILTON, INC.

*Heather L. King* 9/4/13

Heather L. King  
Professional Surveyor No. 8307

Date