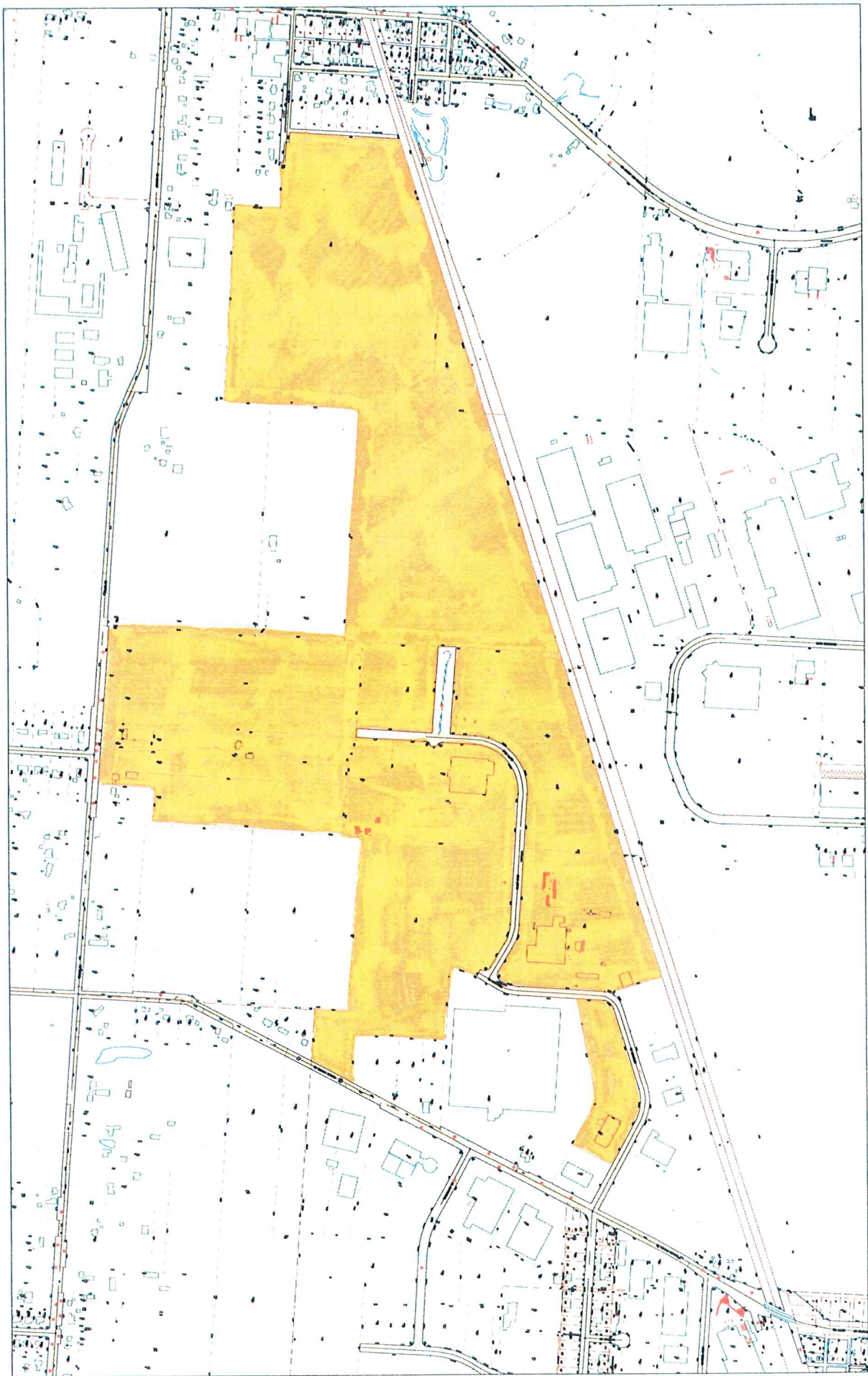


# EXHIBIT A



## **EXHIBIT B**

### **DESCRIPTION OF INFRASTRUCTURE IMPROVEMENTS**

The Infrastructure Improvements include the construction of approximately 6,000 lineal feet of roadway including lighting, approximately 6,000 lineal feet of sanitary sewer service, approximately 7,000 lineal feet of storm sewer improvements and related storm water retention basins, and the realignment and reconstruction of the existing water main, together with all necessary appurtenances.