

2740 East Main Street  
Pexley, Ohio 43209-2577  
14) 235-8677  
Telefax 235-4559

EXHIBIT "A"  
(consisting of 1 page)

December 28, 2001

*Description of Proposed Annexation of +/- 3.1 Acres From Jefferson Township to City of Gahanna*

Situated in the State of Ohio, County of Franklin, Township of Jefferson, in Quarter Township 3, Township 1, Range 16, United States Military Lands and being part of that 3.993 Acre tract conveyed to Donald R. Kenney, Trustee in Instrument Number 200002240037180, all records being of the Recorder's Office, Franklin County, Ohio, and being more particularly described as follows:

Beginning at a point in the east line of said 3.993 Acre tract and in the west line of the 0.171 Acre tract conveyed to Donald R. Kenney, Trustee, said point also being at the southeast corner of a 0.502 Acre tract conveyed to the Franklin County Commissioners in Instrument Number 200103280062333 and being in the existing City of Gahanna Corporation Line as established by Ordinance Number 25-74 and recorded in Miscellaneous Volume 162, Page 607;

Thence, southerly, along the east line of said 3.993 acre tract and the west line of said 0.171 Acre tract and along said Corporation Line established by Ordinance Number 25-74, approximately 322 feet to the southeast corner of said 3.993 Acre tract and in the north line of Lot 8 of Crossroads Commerce Center of record in Plat Book 94, Page 91, in the existing City of Gahanna Corporation Line as established by Ordinance Number 24-88 and recorded in Official Record Volume 12201, Page A-03;

Thence, westerly, along the south line of said 3.993 Acre tract and the north line of said Lot 8 and along said existing City of Gahanna Corporation Line established by Ordinance Number 24-88, approximately 408 feet to the southeast corner of a 0.434 Acre tract conveyed to the City of Gahanna in Instrument Number 200002150031316;

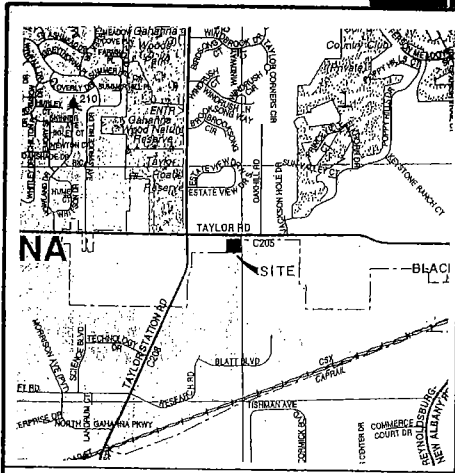
Thence, across said 3.993 Acre tract and along the east line of said 0.434 Acre tract the following four courses:

- 1) Northerly, approximately 80 feet to a point;
- 2) Westerly, approximately 10 feet to a point;
- 3) Northerly, approximately 232 feet to a point;
- 4) Northeasterly, approximately 10 feet to a point in the south line of said 0.502 Acre tract;

Thence, easterly, across said 3.993 Acre tract and along part of the south line of said 0.502 Acre tract, approximately 405 feet to the Point of Beginning, **CONTAINING 3.1 ACRES, more or less.**

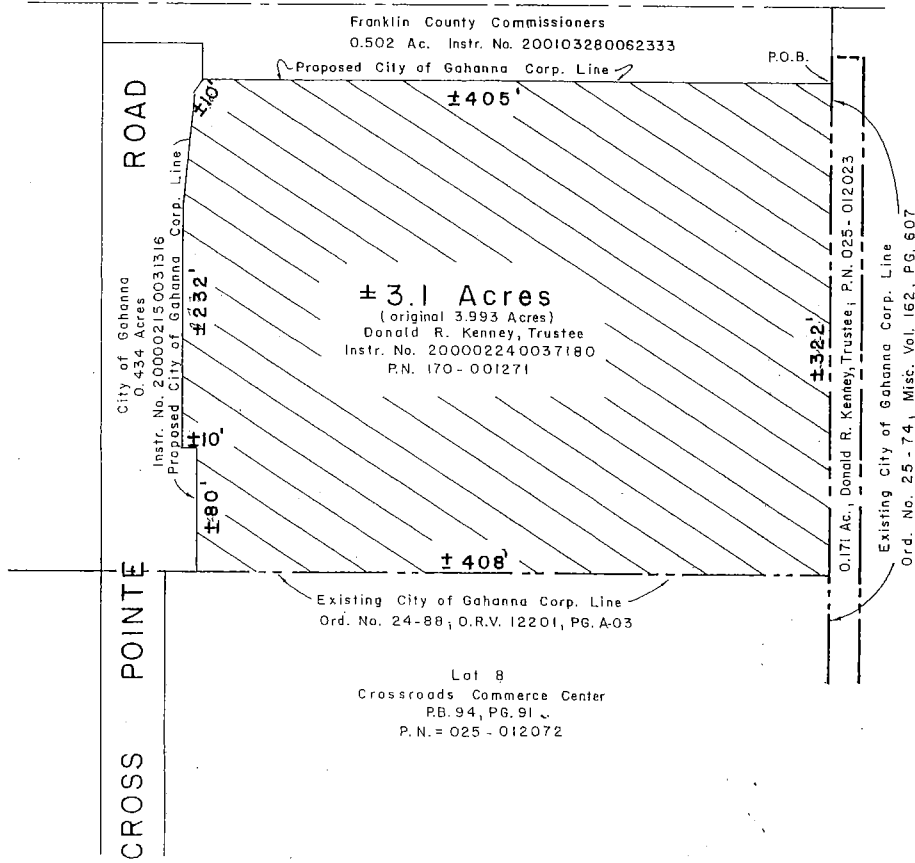
(9122601)

**EXHIBIT A**

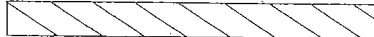


VICINITY MAP

TAYLOR ROAD



AREA TO BE ANNEXED



EXISTING CITY OF GAHANNA CORP. LINE

PROPOSED CITY OF GAHANNA CORP. LINE

P.N. = FRANKLIN COUNTY AUDITOR'S PARCEL NUMBER

ANNEX No. \_\_\_\_\_ ORD. No. \_\_\_\_\_

±3.1 ACRES

TO THE

CITY OF GAHANNA

FROM

JEFFERSON TOWNSHIP

DATE \_\_\_\_\_ SCALE 1" = 80'