

\gpdco.com\data\2022\20220301\90 - 2022 Street Rebuild and Waterline\400-Engineering\Roadway\Sheets\20220301_90_GP100.dwg 12-Jul-23 5:18 PM

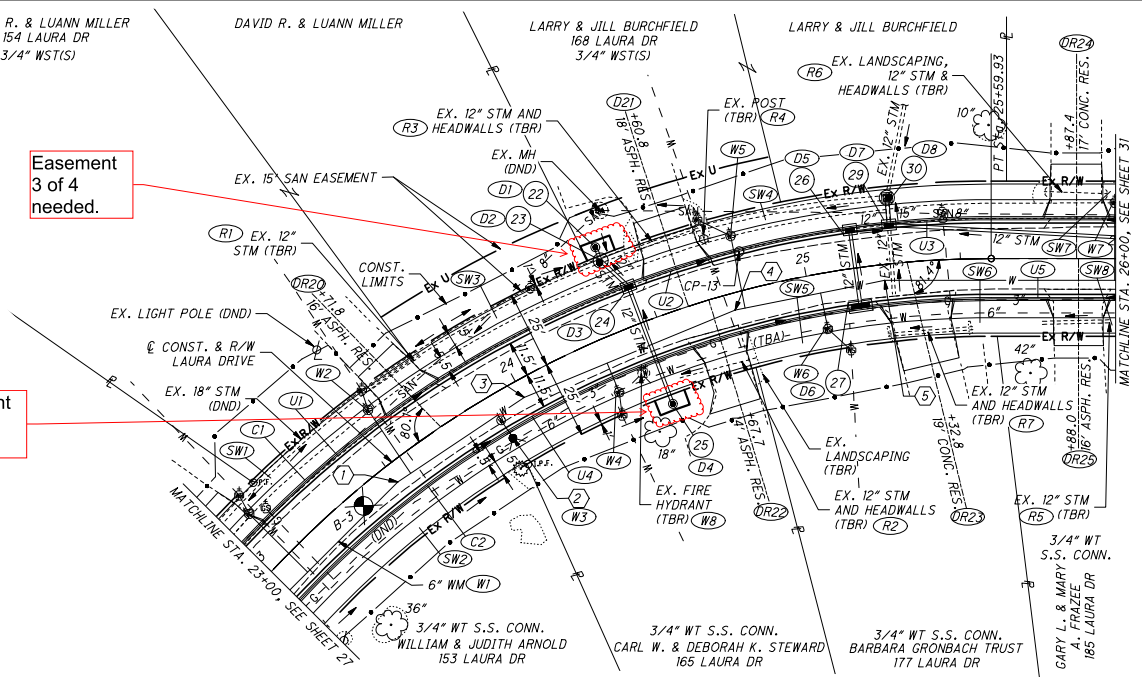
**LAURA DRIVE
CURVE DATA**
 P.I. = STA. 24+09.98
 Dc = 60°33'00"
 Dc = 18°04'28"
 R = 317.000
 T = 185.05'
 L = 335.00'
 E = 50.06'
 C = 319.63
 C.B. = N 62°58'36" E

Easement
4 of 4
needed.

Easement
3 of 4
needed.

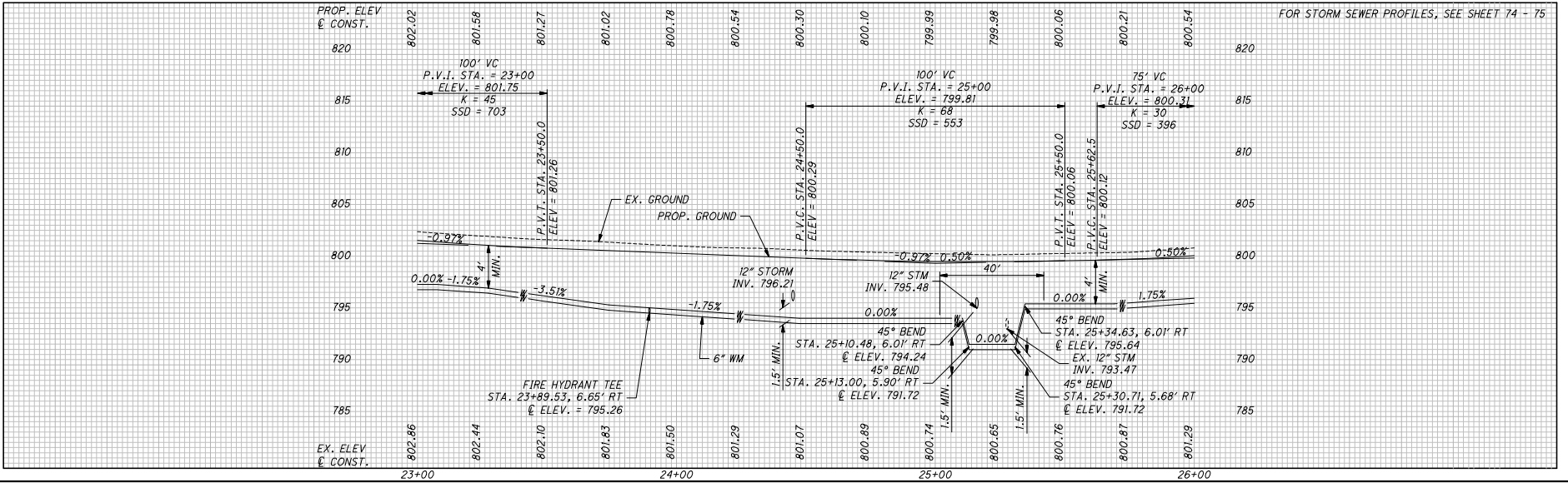
FOR DRIVE DETAILS AND QUANTITIES, SEE SHIT. 70-71

NOTE:
 CONTRACTOR SHALL MATCH EXISTING DRIVE TYPE
 BEYOND CONCRETE APRON/SIDEWALK.



CODED NOTES:

- ① 11.25° BEND
STA. 23+50.00, 6.22' RT.
- ② FIRE HYDRANT, TYPE A SETTING
STA. 23+90.01, 15.5' RT.
- ③ 11.25° BEND
STA. 24+00.00, 5.95' RT.
- ④ 11.25° BEND
STA. 24+75.00, 5.47' RT.
- ⑤ 11.25° BEND
STA. 25+25, 5.11' RT.



FOR STORM SEWER PROFILES, SEE SHEET 74 - 75

**PLAN AND PROFILE - LAURA DRIVE
STA. 23+00 TO STA. 26+00**

**2023 STREET REBUILD AND
WATER LINE REPLACEMENT
ST - 1100**

29
81

RES-0044-2024
 EXHIBIT B