

VALLEY



5715 CANAL ROAD CLEVELAND, OHIO 44125-3494 TEL (216) 524-2400
SALES FAX # 524-8527 PARTS & SERVICE FAX # 524-8497 800-533-2400
www.valleyfordtruck.com

July 8, 2011

City of Gahana
Rick Kreps

Dear Rick,

Sorry bout the delay, it has gotten busy and pricing has changed for some items! Following are the specs / pricing for the truck you would like to order:

Item 22a	
Base	\$22,689.00
6' Bed	(\$176.00)
Spray liner	\$695.00
Upfitter switches	\$145.00
Power group	\$713.06
Cruise / tilt	\$196.95
Cab steps	\$310.07
Bucket Seats (V)	\$83.83
Parts manual	\$154.83
Shop manual	\$177.95
Aluminum toolbox	\$799.00
Ziebart	\$298.00
8.5 Meyer Plow	\$5,583.00
Plow prep	\$71.71
White exterior	included
Total	\$31,741.40

The heated mirrors are included in the power group. As for the email you sent June 6 regarding additional equipment, did you still want numbers for that?

Please call with any questions, I will call to follow up.

Regards,


Jenny Loveland
Fleet Manager

Proud Member of:
Northern Ohio Service Directors
Ohio Township Association
Vendor State of Ohio

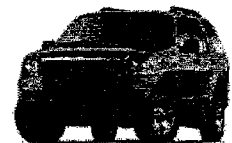


EXHIBIT A

Pickup – Full Size, 4WD, Extended Cab, 8,500 lbs GVWR, 8' Bed - Gasoline
Item Number 22A

Standard Specification Items	Minimum Requirement		Minimum Requirement
Mfg. Make		Alternator (amps)	115
Mfg. Model-Model No.		Battery (CCA)	Mfg. Standard
Seating Capacity	5	Fuel Capacity (gals.)	34
# of Doors	2 Full Size 2 Half Size	Exterior Rear View Mirror	Required
Wheelbase (.in)	157	Keyed Door Locks	Required
Single Rear Wheels	Required	Intermittent Windshield Wipers	Required
Bed Length (ft.)	8	Air Conditioning	Front
Gross Vehicle Weight Rating (GVWR) (lbs.)	8,500	Seat Covering	Vinyl
Base Curb Weight (lbs.)	5,800	Floor Covering	Vinyl
Payload (lbs.)	2,700	Floor Mats (Front/Rear)	Required
Drivetrain	4WD	Radio	AM/FM
Engine Type (Cylinder/Liter)	8/5.4L	Front Seat Type	Split Bench
Alternative Fuel (Type)	Not required	Power Antilock Brakes (Front and Rear)	Required, 4 Wheel
Horsepower (HP)	300	Restraint System (Driver and Passenger)	Required
Torque (ft.-lbs)	360	Supplemental Restraint System (Driver and Passenger)	Required
Cooling System	h.d.a.	Rear Bumper	Step-Type
Automatic Transmission	Auto	Tires	All Terrain
Skid Plate	Required	Spare Tire	Full
Differential Type/Ratio	Limited Slip/Mfg. Std.	Mfg. Standard Warranty	3yr/36K Mile Min.
Dimensions/Ratings		Optional Equipment	
Head Room (Front/Rear)	40/38	Cloth Seat Covering	
Leg Room (Front/Rear)	41/32	Front Bucket Seats	
Hip Room (Front/Rear)	60/64	Snow Plow Prep Pkg. (No Plow)	
Shoulder Room (Front/Rear)	65/66	Snow Plow Pkg. (Incl. Prep)	
Cargo Volume	72	6' Bed Length	
		Trailer Tow Pkg.	
		Trailer Mirrors	
		Cab Steps	
		Cruise Control/Tilt Wheel	
		30-Day Tag	
		Parts Manuals	
		Shop Manuals	
		Power Windows, Locks	

ITEM -22A -- Pickup -- Full-Size, 4WD, Extended Cab, 8,500 lbs. GVWR, 8' Bed - Gasoline

DELIVERY: 120 DAYS A.R.O. (See IV.A.) INDICATE CITY/STATE OF MANUFACTURER Louisville, KY

CONTRACTOR: Valley Ford	MFG: Ford	MODEL: F250	MODEL NUMBER: X2B
Item ID No.: 18949			UNIT PRICE: \$22,689.00

List any exceptions to the specifications: None

ITEM ID NO.		UNIT COST
18950	Delivery charge per mile, per vehicle round trip map mileage for delivery by the contractor	\$.60
18951	Minimum Delivery Charge:	\$ 50.00

ITEM ID NO.	CONTRACTOR'S ORDER NO.	OPTIONS	UNIT COST
18952	1	Cloth Seat Covering	\$ 83.83
18953	1	Front Bucket Seats	\$ 83.83
18954	473	Snow Plow Prep. (No Plow)	\$ 71.71
18955	8' Plow	Snow Plow Package (Incl. Chassis Prep)	\$ 2,620.00
*	142" WB	6' Bed Length	\$ 176.00
	Included	Towing Package, State Rating: (12,200 lbs.)	\$ 0.00
	Included	Trailer Mirrors	\$ 0.00
18957	18B	Cab Steps	\$ 310.07
18958	525	Cruise Control/Tilt Wheel	\$ 196.95
18959	Tag	30 Day Tag	\$ 18.50
18960	90L	Power Windows, Locks	\$ 719.06
18961	PM	Parts Manual (Electronic)	\$ 154.83
18962	SM	Shop Manual (Electronic)	\$ 177.95
18963	Spray Liner	Spray Liner	\$ 695.00

List standard paint colors: Dark Blue Pearl, Vermillion Red, Forest Green, Pale Adobe, Black, Sterling Gray, Ingot, Silver, Oxford White.

18964 * UNSPECIFIED OPTION PRICE: 3% above manufacturer invoice.

Any option not specified in the options table above will be made available to the ordering entities, following Contract award, at the Unspecified Option Price. If no Unspecified Option Price is provided by the Offeror, the State will assume that the price will be equal to the manufacture invoice. The Unspecified Option Price and Additional Option Packages specified by the Offeror will not be used in the vehicle evaluation.

*Deleted item number 18956; not required by OAKS for negative values.