

An architectural rendering of the Gahanna Civic Center. The scene depicts a vibrant public plaza with a central fountain. The fountain has several vertical jets of water. People are seen walking, sitting on a curved ledge, and standing near the fountain. In the background, there are multi-story buildings with balconies and awnings, suggesting a mixed-use urban environment. The sky is overcast. The overall color palette is muted, with a teal or greyish tint.

MSA DESIGN

# GAHANNA CIVIC CENTER

CO-CREATE THE FUTURE



# PROJECT OBJECTIVES

1. INVITING & APPROACHABLE
2. CREATE A CLEAR CIVIC PRESENCE
3. COMMUNITY & SERVICE FOCUSED
4. EFFICIENT IN PLANNING
5. ALLOW FOR FUTURE EXPANSION
6. SAFE & SECURE
7. MEETS ADDITION / RENOVATION SF GOALS
8. MEETS PROGRAM GOALS
9. BUILDING RE-BRANDING / UNIQUE IDENTITY
10. DAYLIGHTING / QUALITY OF INTERIOR SPACES

# SITE STUDY



# EXISTING SITE CONTEXT



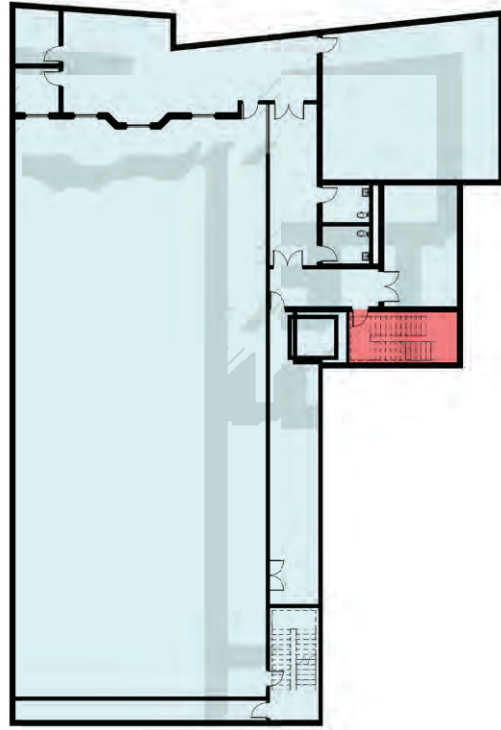
# SITE PLAN



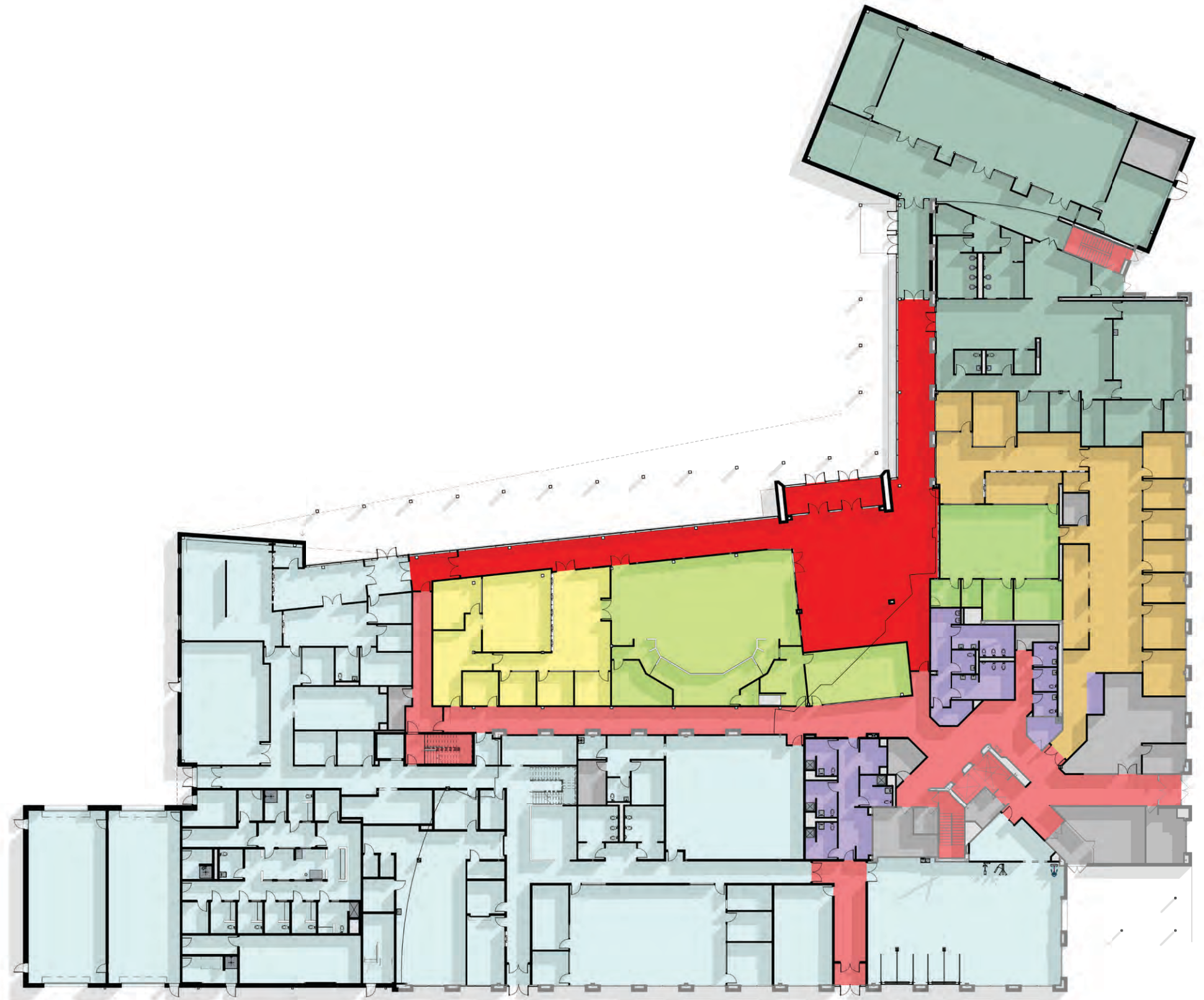
# PLAN UPDATES



# LOWER LEVEL AND FIRST FLOOR



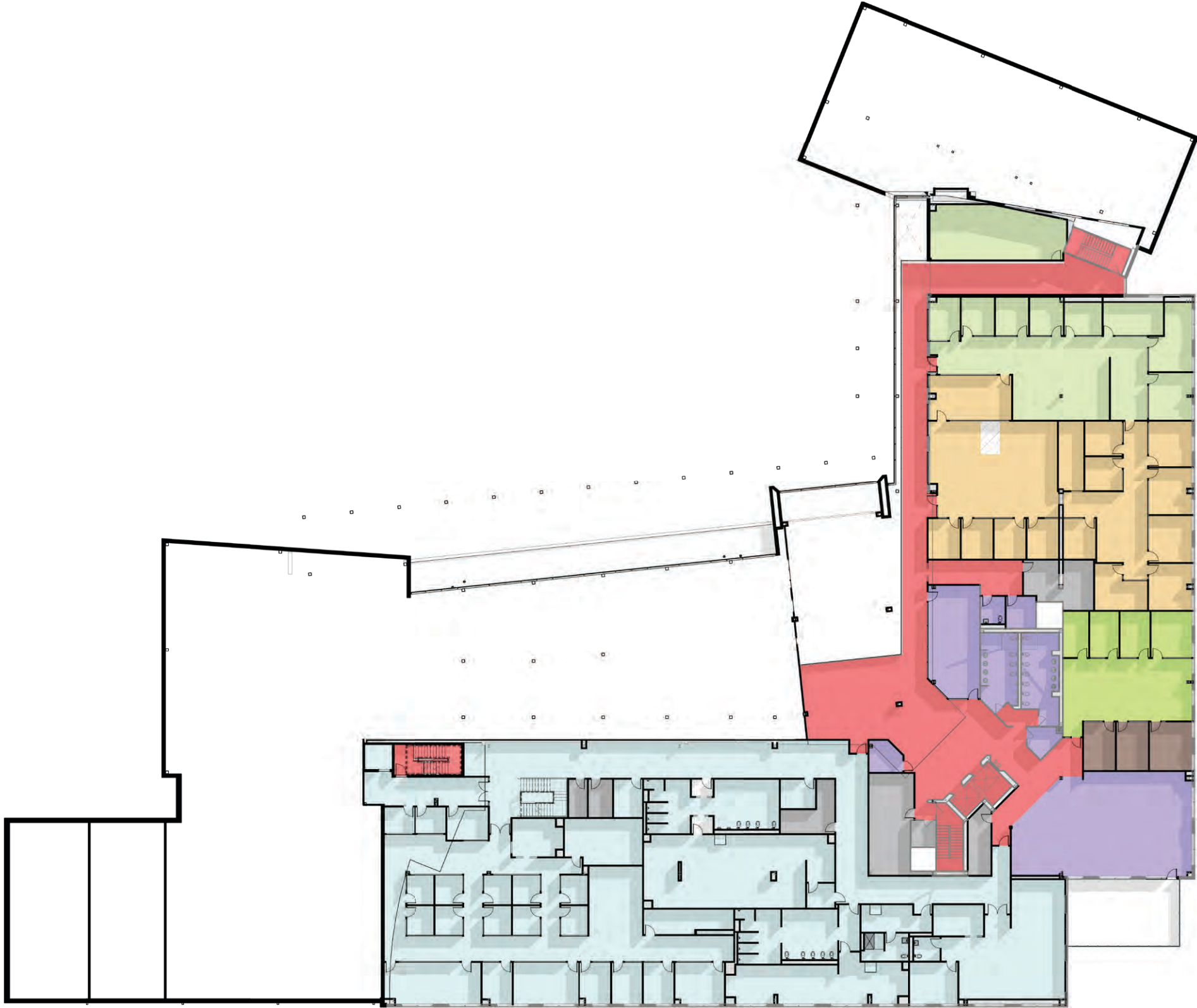
LOWER LEVEL



LOWER LEVEL



# SECOND FLOOR





# THIRD FLOOR



# EXTERIOR ARCHITECTURE PROGRESS



FRONT VIEW | EXISTING



# FRONT VIEW | UPDATED PERSPECTIVE



# FRONT VIEW | UPDATED PERSPECTIVE



# FRONT VIEW | UPDATED PERSPECTIVE

