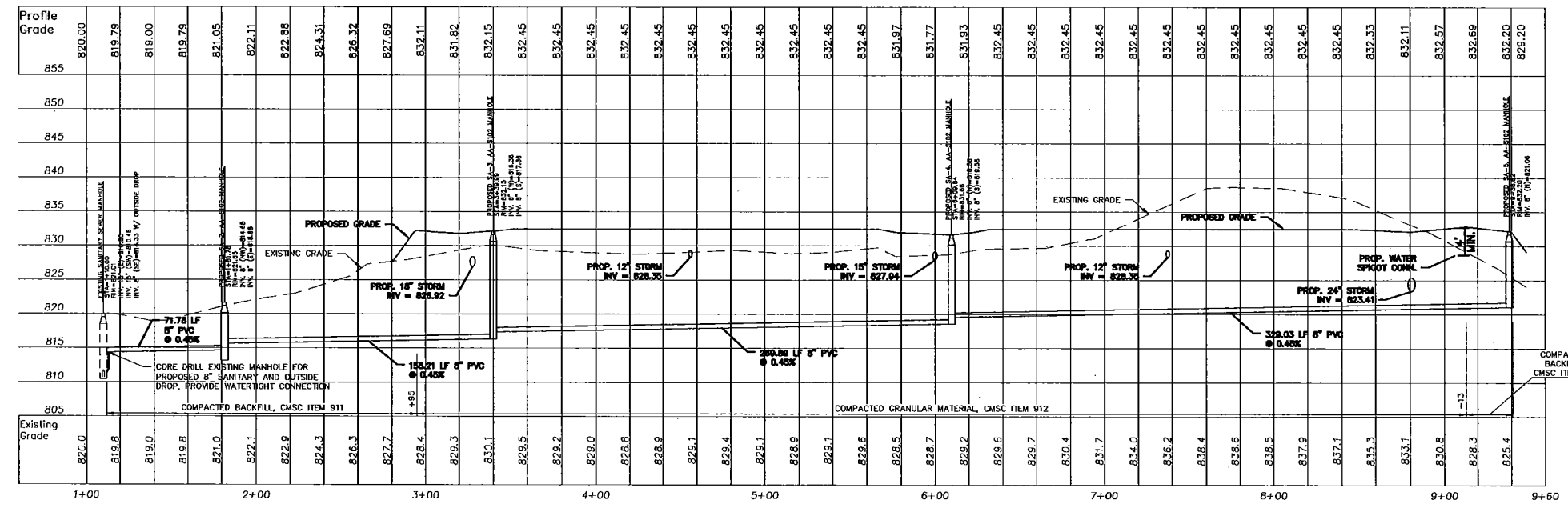


UTILITY STRUCTURES - SAN

- EX 1 EXISTING SANITARY SEWER MANHOLE
 STA=1+10.00
 RIM=821.01
 INV. 15" (E)=810.80
 INV. 15" (SW)=810.46
 INV. 8" (SE)=812.34
- SA 2 PROPOSED AA-S102 MANHOLE
 STA=1+81.78
 RIM=821.65
 INV. 8" (NW)=813.19
 INV. 8" (E)=814.19
- SA 3 PROPOSED AA-S102 MANHOLE
 STA=3+39.99
 RIM=832.15
 INV. 8" (W)=814.90
 INV. 8" (S)=815.90
- SA 4 PROPOSED AA-S102 MANHOLE
 STA=6+09.84
 RIM=831.88
 INV. 8" (N)=817.11
 INV. 8" (S)=818.11
- SA 5 PROPOSED AA-S102 MANHOLE
 STA=9+38.82
 RIM=832.20
 INV. 8" (N)=819.59

REV.	DATE	DESCRIPTION

Sanitary Sewer Value = \$131,388.26



PROFILE VIEW
 HORIZONTAL SCALE: 1"=40'
 VERTICAL SCALE: 1"=10'

NOTE:
 WHERE STORM DRAIN LINES CROSS PROPOSED SANITARY SEWER MAINS AND/OR LATERALS AN ANTI-INFILTRATION AND INFLOW BARRIER SHALL BE PROVIDED FOR PROTECTION. SEE DETAIL SHEET 2 OF 3.

PLAN # SA-1022



Lead Building Company LLC
 9253 Riverside Drive, Suite 200
 Dublin, OH 43017

**PARK CROSSING
 NORTH HAMILTON ROAD
 GAHANNA, OHIO**

**SANITARY SEWER PLAN
 AND PROFILE**

ISSUED FOR:	PERMIT	05/12/2014
BID	CONSTRUCTION	-
RECORD	-	-
PROJECT MANAGER:	DESIGNER:	
BH	JM	

JOB NO.
2013149.02

