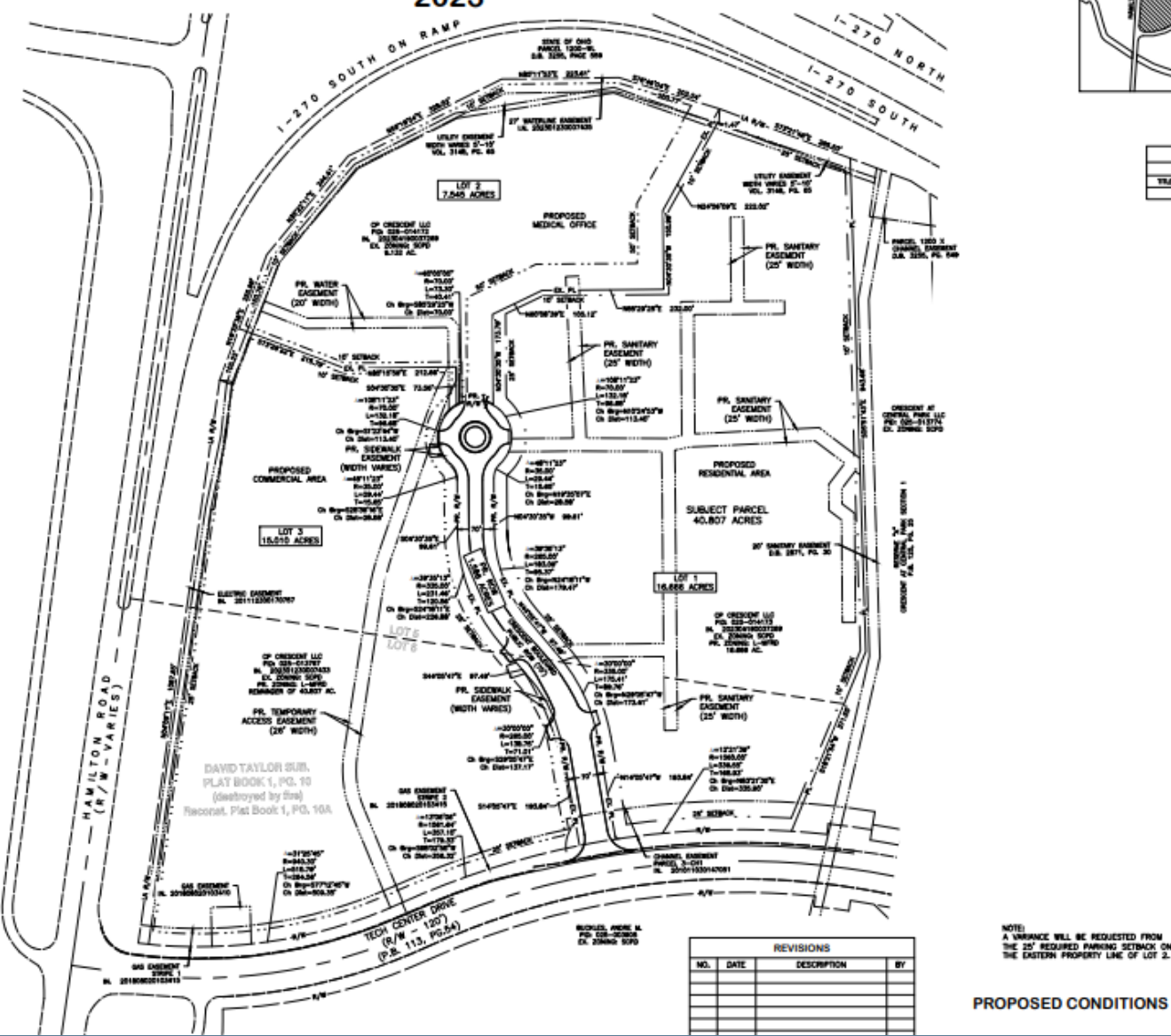


Crescent Woods

**CIVIL ENGINEER INFORMATION**  
 C.A. HENNE & ASSOCIATES, INC.  
 2130 SUNNY TRAILS DR.  
 2ND FLOOR  
 COLUMBUS, OHIO 43228  
 BRUCE CHRISTOPHER L. POSE, P.E.  
 PHONE (614) 299-2292  
 FAX (614) 299-2292  
 EMAIL: caha@caha.com

**CRESCENT WOODS**  
 CITY OF GAHANNA, OHIO  
 2023



REVISIONS			
NO.	DATE	DESCRIPTION	BY

NOTE:  
 A VARIANCE WILL BE REQUESTED FROM  
 THE 25' REQUIRED PARKING SETBACK ON  
 THE EASTERN PROPERTY LINE OF LOT 2.

**PROPOSED CONDITIONS**

BY TRAILS DR.  
 OHIO 43228  
 2999  
 2992 (Fax)





**LAND USE KEY**

<b>A-1</b>	Use: COMMERCIAL Retail - Single Story - 65'0" Depth Area: +/-3.30 AC. Floor Area: +/-16.0k SF
<b>A-2</b>	Use: COMMERCIAL Retail / Fuel/C-Store - Single Story Area: +/-3.72 AC. Floor Area: +/-4.5k SF
<b>B-1</b>	Use: COMMERCIAL Office / Medical Office - 3 Story Area: +/-7.15 AC. Floor Area: +/-60.0k SF
<b>B-2</b>	Use: COMMERCIAL Office / Medical Office - 4 Story Area: +/-7.55 AC. Floor Area: +/-83.0k SF
<b>C-1</b>	Use: RESIDENTIAL Multi-Family (2 & 3 Story) Area: +/-16.66 AC.

Total Units: 294

Total Parking:	550
Surface:	408
Garage Attached:	106
Garage Detached:	36



# Gahanna