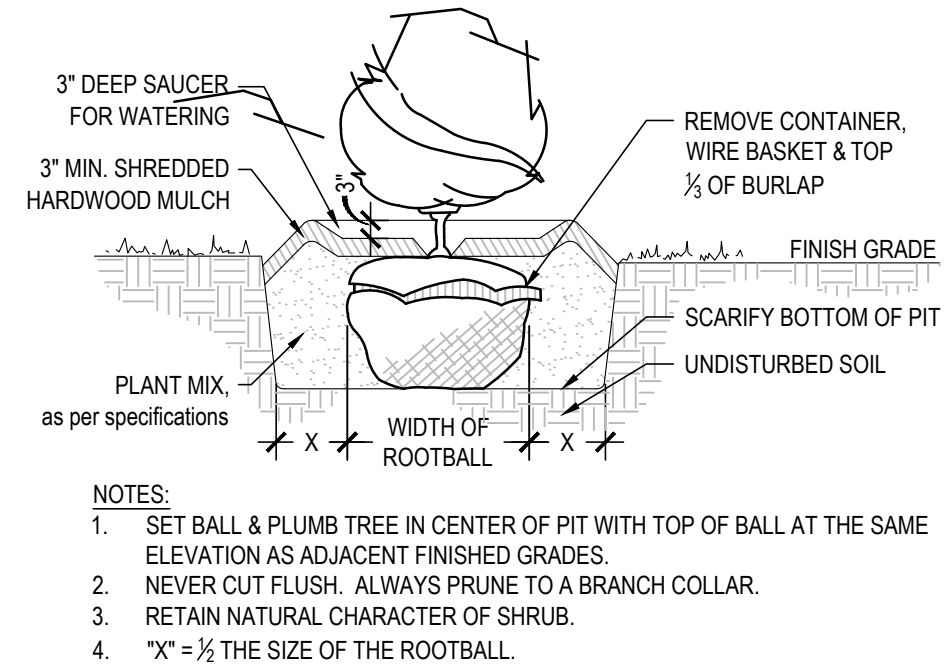
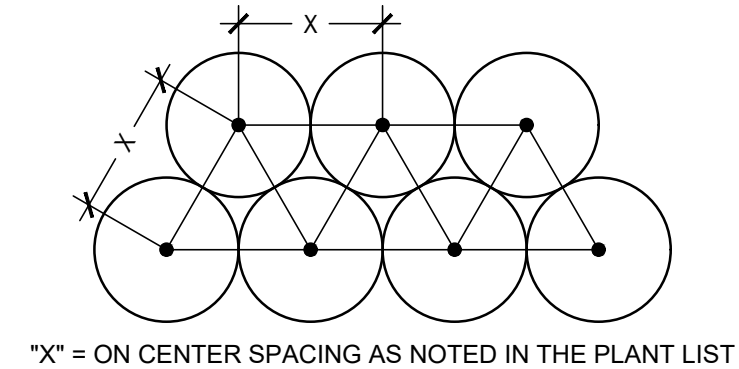


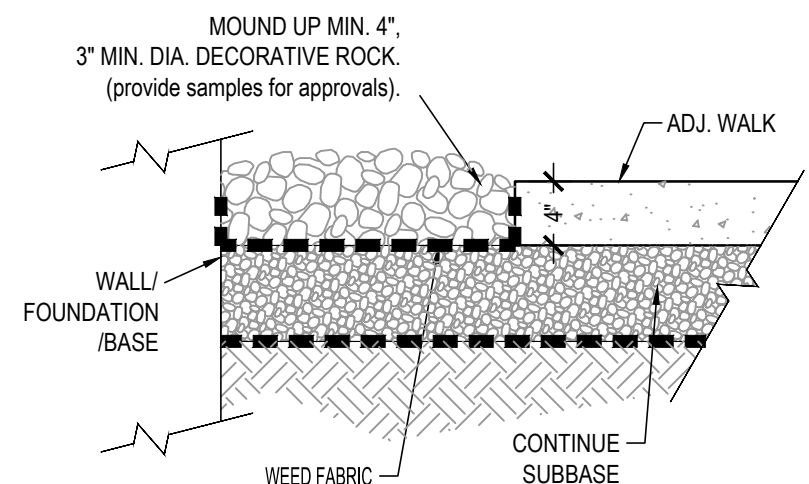
P1 TYPICAL DECIDUOUS TREE PLANTING
NTS



P2 TYPICAL SHRUB PLANTING
NTS



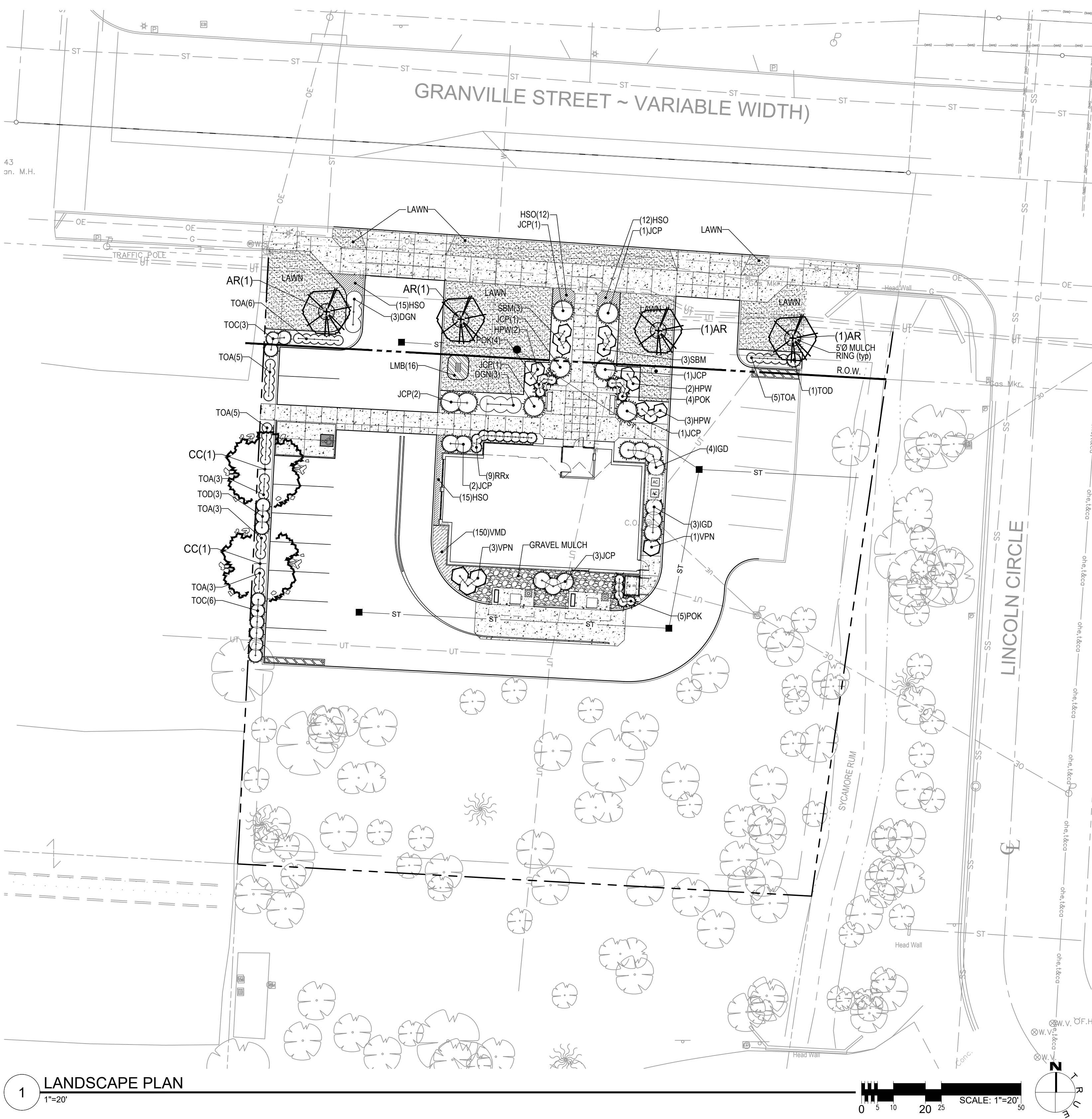
P3 TYPICAL PLANT SPACING
NTS



P4 ROCK MULCH
NTS

PLANT LIST:

QTY	SYM	Botanical Name	Common Name	Size	Type	Comment	On - Center Spacing
							inches feet
TREES							
4	AR	Acer rubrum 'Armstrong'	Armstrong Maple	3\" cal.	B&B		as shown
2	CC	Cercis canadensis	Eastern Redbud	2\" cal.	B&B		as shown
SHRUBS							
7	HPW	Hydrangea paniculata 'White Diamonds'	White Diamonds Hydrangea	#5	cont.	30"	42 in. 3.5 ft.
7	IGD	Ilex glabra 'Densa'	Densse Inkberry	#3	cont.		48 in. 4 ft.
13	JCP	Juniperus chinensis pfitzeriana 'Kallay'	Kallay Juniper	#5	cont.	15-18"	60 in. 5 ft.
9	RRx	Rhododendron 'Ramapo'	Ramapo Rhododendron	#2	cont.	10-12"	30 in. 2.5 ft.
6	SBM	Spiraea x bumalda 'Monhub'	Limemound Spiraea	#5	cont.	30"	36 in. 3 ft.
30	TOA	Thuja occidentalis 'Aurea'	Golden Globe Arborvitae		B&B	36"	30 in. 2.5 ft.
9	TOC	Thuja occidentalis 'Congabe'	Fire Chief Globe Arborvitae		B&B	36"	42 in. 3.5 ft.
4	TOD	Thuja occidentalis 'Danica'	Danica Dwarf Globe Arborvitae		B&B	35"	48 in. 4 ft.
4	VPN	Viburnum plicatum 'Newzam'	Newport Dwarf Doublefile Viburnum	#7	cont.	18-24"	48 in. 4 ft.
LOW SHRUBS / GROUND COVER							
6	DGN	Deutzia gracilis 'Nikko'	Nikko Slender Deutzia	#2	cont.	10-12"	24 in. 2 ft.
150	VMD	Vinca Minor 'Dart's Blue'	Creeping Myrtle	2 1/4"	pp.	flat(50)	8 in. 0.7 ft.
PERENNIALS / GRASSES							
54	HSO	Hemerocallis 'Stella D'Oro'	Stella D'Oro Daylily	#1.5	cont.		18 in. 1.5 ft.
16	LMB	Liriope muscari 'Big Blue'	Big Blue Liriope	#1	cont.		18 in. 1.5 ft.
13	POK	Pennisetum orientale 'Karl's Rose'	Karl's Rose Fountain Grass	#3	cont.		30 in. 2.5 ft.



1 LANDSCAPE PLAN
1"=20'

LANDSCAPE NOTES:

- PLANTING SHALL BE IN ACCORDANCE WITH THE RECOMMENDED PRACTICE OF THE AMERICAN SOCIETY OF NURSERYMEN.
- PLANTS SHALL MAINTAINED AND GUARANTEED FOR ONE CONTINUOUS PLANTING SEASON, FROM THE TIME OF INSTALLATION.
- FOR ANY LANDSCAPE AREA DESIGNATED TO REMAIN, WHETHER ON OR OFF-SITE, REMOVE WEEDS, ROCKS, CONSTRUCTION MATERIALS, ETC.
- CLEAN UP OF DEBRIS AND RESTORATION SHALL INCLUDE AREAS WITHIN AND BEYOND THE PROPERTY LINES, INCLUDING BUT NOT LIMITED TO RIGHT-OF-WAYS, CURBS AND GUTTERS, ETC.
- SCARIFY ALL AREAS PRIOR TO TOPSOIL PLACEMENT.
- TOPSOIL SHALL NOT BE PLACED OR WORKED WHILE FROZEN OR WET.
- PLACE TOPSOIL UNIFORMLY TO PREVENT UNEVEN SETTLEMENT.
- DEPTH OF TOPSOIL IS TO BE:
 - A MINIMUM OF TEN (10) INCHES IN PLANTING BEDS
 - A MINIMUM OF FOUR (4) INCHES IN LAWN AREAS.
- FINISHED GRADES SHALL BE INSTALLED AS FOLLOWS:
 - ISLANDS: SHALL BE INSTALLED ONE (1) INCH LOWER THAN THE TOP OF THE SURROUNDING CURBS AND SIDEWALKS.
 - SLAB ON GRADE STRUCTURES: SHALL BE FOUR (4) INCHES BELOW FINISHED FLOOR (1" TO TOP OF MULCH)
- PLANTING BEDS ARE DEFINED AS ANY AREA WITHIN THE PROJECT THAT IS NOT A HARD SURFACE, STRUCTURE, OR GRAPHICALLY SHOWN TO BE LAWN.
- PROVIDE A WEED MAT FOR ALL PLANTING AREAS.
- COORDINATE INSTALLATION OF TREES AND SHRUBS WITH UNDERGROUND UTILITIES, LOT LIGHTS, UNDERGROUND STORM SYSTEM, ETC.
- ALL TREES SHALL BE PLANTED AND MAINTAINED TO GROW UPRIGHT AND PLUMB.
- FREE STANDING CANOPY TREES (as shown) SHALL HAVE A MULCH RING OF FIVE (5) FEET IN DIAMETER (MAX).
- MULCH PLANTING BEDS A MINIMUM OF THREE (3) INCHES DEEP WITH ORGANIC MULCH FREE OF DELETERIOUS MATERIALS AND SUITABLE FOR TOP DRESSING OF TREES, SHRUBS, AND OTHER PLANT MATERIALS. MULCH MATERIAL SHALL BE AGED SHREDDED HARDWOOD OR GROUND SHREDDED BARK.
- ALL LAWNS ARE TO BE SODDED. ALL REMAINING AREAS ARE TO BE SEEDED AS PER THE SPECIFICATIONS.
- SEE EROSION & SEDIMENTATION CONTROL DETAILS FOR TEMPORARY SEEDING REQUIREMENTS.
- SEE EROSION & SEDIMENTATION CONTROL PLANS FOR TYPE AND LOCATION OF EROSION CONTROL BLANKETS AND OTHER EROSION CONTROL MEASURES.

MUNICIPAL DATA:

<input type="checkbox"/> IMPERVIOUS SURFACE AREAS: <input type="checkbox"/> PERVIOUS SURFACE AREAS: EXISTING: PROPOSED: NET INCREASE:	SEE SHEET #1 (area within Limit of Disturbance) 3,979.68 square feet 5,145.90 square feet 1,166.22 square feet
<input type="checkbox"/> NUMBER OF EXISTING TREES: <input type="checkbox"/> NUMBER OF PROPOSED TREES:	REAR OF LOT WOODED (species vary) THREE (3) LIVE TREES REMOVED (see sh# 2) SIX (6) [see plant list]



**LARSON
• KARLE
ARCHITECTS**

Warren
3 Farm Colony Drive • Warren, PA 16985
814 • 728 • 6010
Pittsburgh
1601 Marys Ave., Suite 205-B • Pittsburgh, PA 15215
412 • 954 • 1553
Erie
1946 W. 26th St., Suite 38 • Erie, PA 16508
814 • 653 • 7867

MUNICIPAL

ADDENDUMS

No.	Date	Name

Project



191 GRANVILLE ST.
GAHANNA, OH 43230

Title
LANDSCAPE PLAN

Date
2025.05.19

Project Number
24092

Drawn By
DXS

Sheet Number

L101

ARCHITECTURE • INTERIOR DESIGN
LANDSCAPE ARCHITECTURE • SPACE PLANNING
© 2025 All Rights Reserved Larson Karle Architects