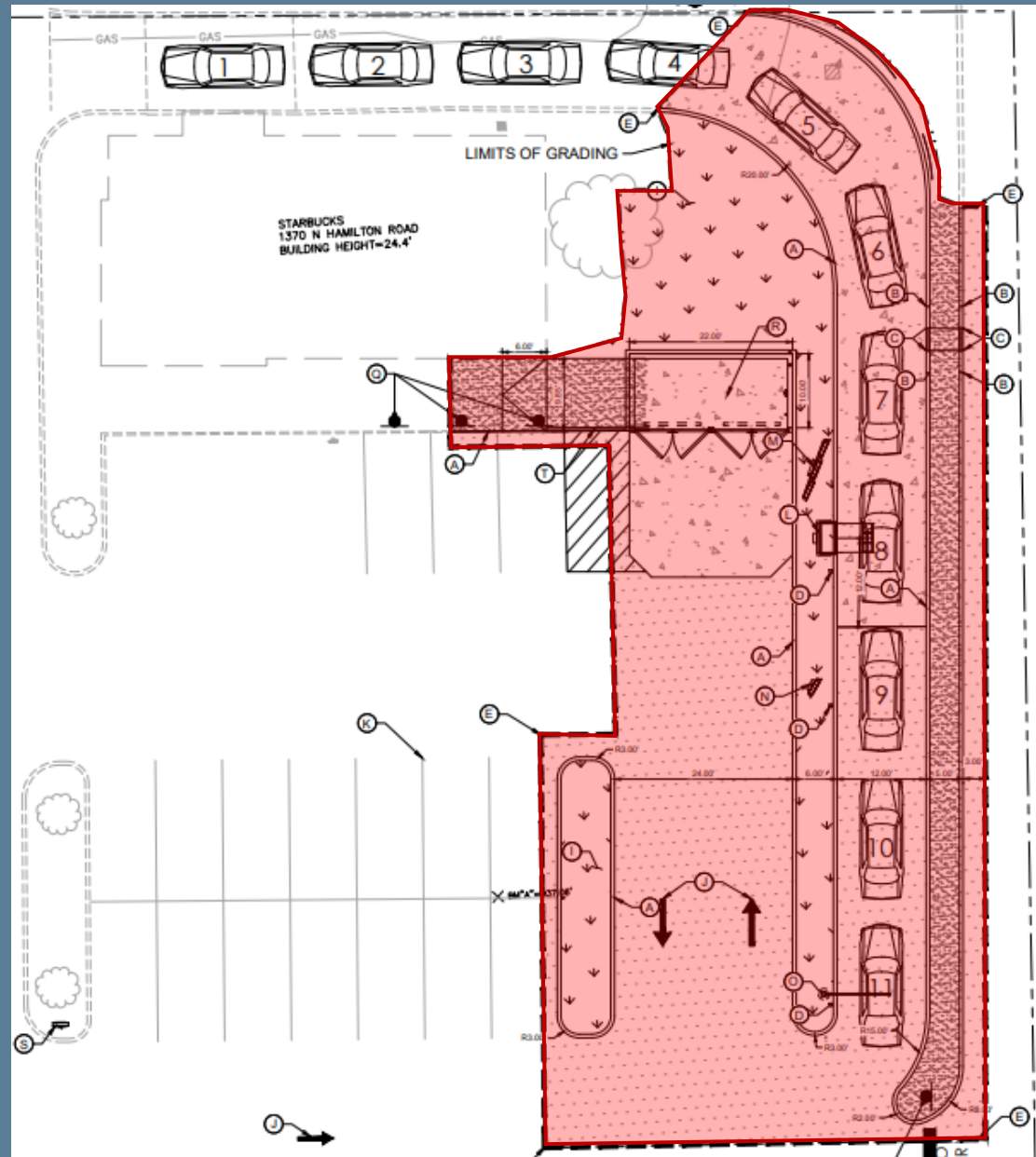
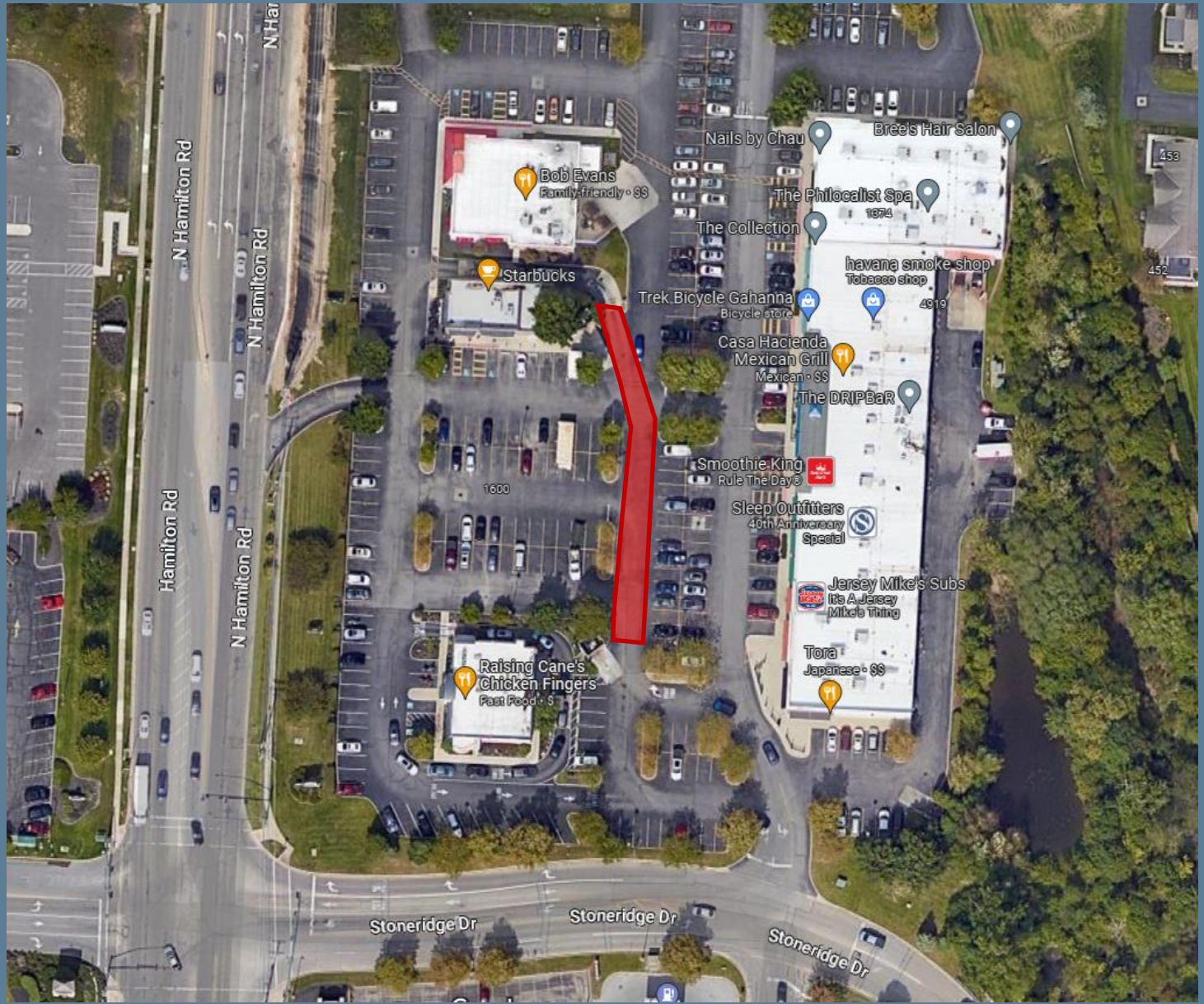


Request Summary

- **Design Review**
 - Reconfigure drive thru and landscaping at existing Starbucks
 - Removal of some concrete, landscaping, three trees, and 14 parking spaces
 - Two new trees and one new island proposed
 - Relocation of existing menu board and associated equipment
 - Signage will be reviewed through permitting process
 - Drive thru will have 11 stacking spaces for cars
 - New island separating drive thru lane and parking and new curb separating drive thru from adjacent lot





Request Summary

- **Design Review Criteria**
 - Compatibility with existing structures
 - Contributes to the improvement of the design of the district
 - Contributes to the economic and community vitality of the district
 - Maintain, protect, and enhance physical surroundings
- **DRD-3 Criteria**
 - Entrances and exits from commercial sites should be well decorated and landscaped
 - Landscaped islands in center and perimeter of commercial parking areas

Request Summary

- Staff recommendation
 - Approval
 - All criteria met
 - Site will align more with DRD-3 with modifications
 - No changes to existing building
 - Help relieve circulation issues



Gahanna