

From: Stephania Ferrell
Sent: Tuesday, May 21, 2024 2:19 PM
To: Council
Cc: Laurie Jadwin; Kevin Schultz
Subject: Big Walnut Trail - Updated Exhibit
Attachments: Exhibit-Design-100.pdf

Good afternoon,

Thank you for the discussion regarding the Big Walnut Trail proposal at the May 13 Committee of the Whole. Based on feedback, as well as understanding the exhibit that was included in the proposal was challenging to review, I requested for the engineering consultant, Structurepoint, to create an updated map.

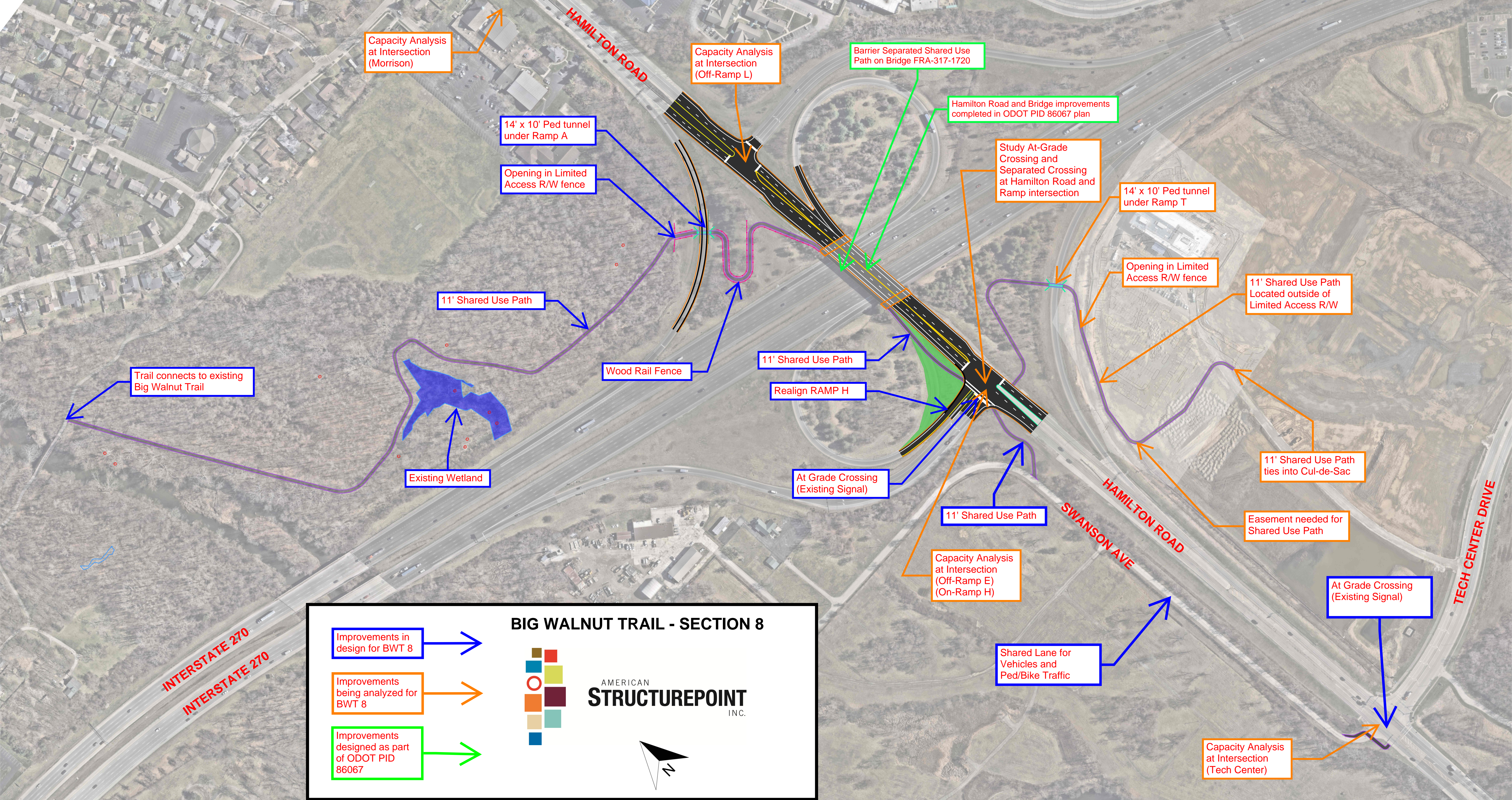
At first glance, the map is alarmingly busy. However, the color coding outlined in the map key was the best way to articulate the project design and outstanding analysis. I hope this is useful.

Thank you,

STEPHANIA FERRELL
Director
Department of Parks & Recreation



CITY OF GAHANNA
200 S. Hamilton Rd.
Gahanna, Ohio 43230
614.342.4259
www.gahanna.gov
Stephania.Bernard-Ferrell@gahanna.gov



Capacity Analysis at Intersection (Morrison)

Capacity Analysis at Intersection (Off-Ramp L)

Barrier Separated Shared Use Path on Bridge FRA-317-1720

Hamilton Road and Bridge improvements completed in ODOT PID 86067 plan

Study At-Grade Crossing and Separated Crossing at Hamilton Road and Ramp intersection

14' x 10' Ped tunnel under Ramp T

Opening in Limited Access R/W fence

11' Shared Use Path Located outside of Limited Access R/W

11' Shared Use Path ties into Cul-de-Sac

Easement needed for Shared Use Path

At Grade Crossing (Existing Signal)

Capacity Analysis at Intersection (Tech Center)

14' x 10' Ped tunnel under Ramp A

Opening in Limited Access R/W fence

11' Shared Use Path

Wood Rail Fence

11' Shared Use Path

Realign RAMP H

At Grade Crossing (Existing Signal)

11' Shared Use Path

Capacity Analysis at Intersection (Off-Ramp E) (On-Ramp H)

Shared Lane for Vehicles and Ped/Bike Traffic

Trail connects to existing Big Walnut Trail

Existing Wetland

BIG WALNUT TRAIL - SECTION 8

AMERICAN
STRUCTUREPOINT
INC.

- Improvements in design for BWT 8 (Blue arrow)
- Improvements being analyzed for BWT 8 (Orange arrow)
- Improvements designed as part of ODOT PID 86067 (Green arrow)

INTERSTATE 270
INTERSTATE 270

HAMILTON ROAD

HAMILTON ROAD
SWANSON AVE

TECH CENTER DRIVE