

32.905 ACRES

Situated in the State of Ohio, County of Franklin, City of Gahanna, in Quarter Township 3, Township 1, Range 16, United States Military Lands, being all of the subdivision entitled "Foxwood Section 1", of record in Plat Book 102, Page 63, all of the subdivision entitled "Foxwood Section 2", of record in Plat Book 104, Page 63, and part of the subdivision entitled "Foxwood Section 3, of record in Plat Book 109, Page 54 (all references refer to the records of the Recorder's Office, Franklin County, Ohio), and being described as follows:

Beginning at the southwesterly corner of Lot 1 of said Section 1;

Thence the following courses and distances:

North 04° 07' 19" East, a distance of 359.74 feet to a point;

North 85° 43' 52" West, a distance of 174.15 feet to a point;

North 03° 49' 26" East, a distance of 2243.61 feet to a point;

South 85° 55' 06" East, a distance of 171.20 feet to a point;

South 03° 08' 47" West, a distance of 461.52 feet to a point;

South 85° 39' 27" East, a distance of 155.04 feet to a point;

South 03° 08' 47" West, a distance of 265.00 feet to a point;

South 12° 11' 35" East, a distance of 76.21 feet to a point;

South 32° 50' 10" East, a distance of 60.32 feet to a point;

South 29° 34' 05" West, a distance of 142.29 feet to a point;

South 38° 55' 03" East, a distance of 15.05 feet to a point;

North 29° 34' 05" East, a distance of 140.49 feet to a point;

North 55° 21' 32" East, a distance of 236.36 feet to a point;

North 03° 08' 47" East, a distance of 250.00 feet to a point;

South 85° 39' 27" East, a distance of 251.81 feet to a point;

South 03° 26' 36" West, a distance of 660.18 feet to a point;

North 89° 11' 43" West, a distance of 241.73 feet to a point;

South 14° 51' 37" East, a distance of 105.08 feet to a point;

North 86° 10' 34" West, a distance of 135.74 feet to a point on the arc of a curve to the right;

With the arc of said curve, having a central angle of 14°56'04", a radius of 485.00 feet, an arc length of 126.42 feet and a chord that bears South 03°38'36" East, a chord distance of 126.06 feet to a point;

South 03° 49' 26" West, a distance of 105.00 feet to a point of curvature to the left;

With the arc of said curve, having a central angle of 90°00'00", a radius of 20.00 feet, an arc length of 31.42 feet and a chord that bears South 41°10'34" East, a chord distance of 28.28 feet to a point;

South 03° 49' 26" West, a distance of 50.00 feet to a point of curvature to the left;

EXHIBIT A

RECEIVED
FEB 06 2015

BY: CAS

32.905 ACRES

-2-

With the arc of said curve, having a central angle of $90^{\circ}00'00''$, a radius of 20.00 feet, an arc length of 31.42 feet and a chord that bears South $48^{\circ}49'26''$ West, a chord distance of 28.28 feet to a point;

South $03^{\circ}49'26''$ West, a distance of 80.00 feet to a point;

South $86^{\circ}10'34''$ East, a distance of 137.50 feet to a point;

South $03^{\circ}49'26''$ West, a distance of 80.00 feet to a point;

North $85^{\circ}04'30''$ East, a distance of 195.60 feet to a point;

South $03^{\circ}49'26''$ West, a distance of 420.57 feet to a point;

North $85^{\circ}42'32''$ West, a distance of 80.54 feet to a point;

South $03^{\circ}35'24''$ West, a distance of 139.85 feet to a point;

North $85^{\circ}42'19''$ West, a distance of 155.01 feet to a point;

South $04^{\circ}07'19''$ West, a distance of 357.80 feet to a point;

North $85^{\circ}51'05''$ West, a distance of 110.01 feet to a point;

North $04^{\circ}07'19''$ East, a distance of 359.89 feet to a point;

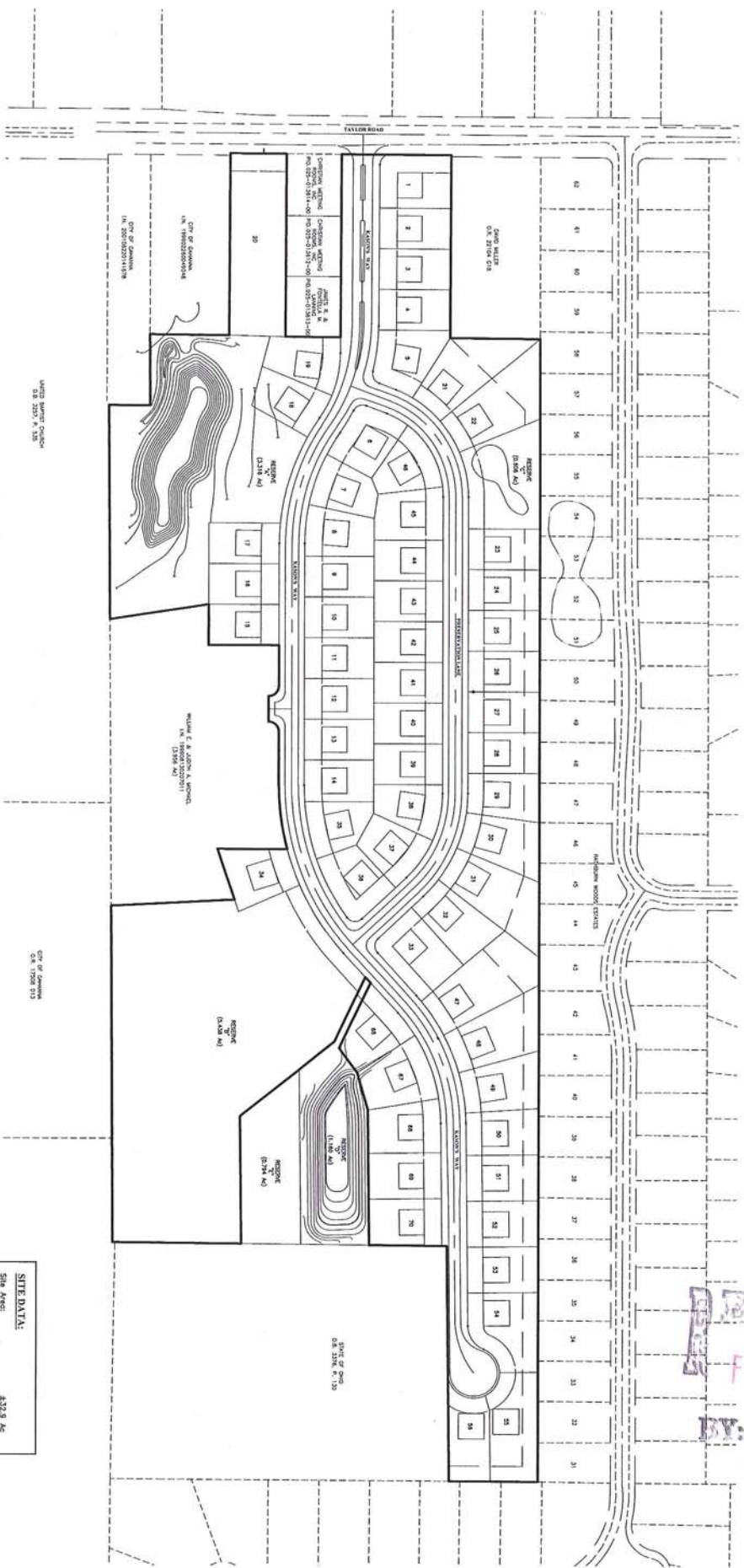
North $85^{\circ}52'41''$ West, a distance of 109.00 feet to a point;

South $04^{\circ}07'19''$ West, a distance of 359.84 feet to a point; and

North $85^{\circ}51'05''$ West, a distance of 218.00 feet, to the POINT OF BEGINNING, containing 32.905 acres of land, more or less.

RECORDED
FEB 06 2015

BY: *AS*



SITE DATA:
 Site Area: 432.9 Ac.
 Number of Lots: 61 Lots
 Open Space: 49.4 Ac.
 (Reserves A, B & C)

RECEIVED
 FEB 06 2015
 BY: *CAS*



SHEET
 1 / 1

DATE: February, 2015
 SCALE: 1" = 100'
 JOB NO.: 20121603

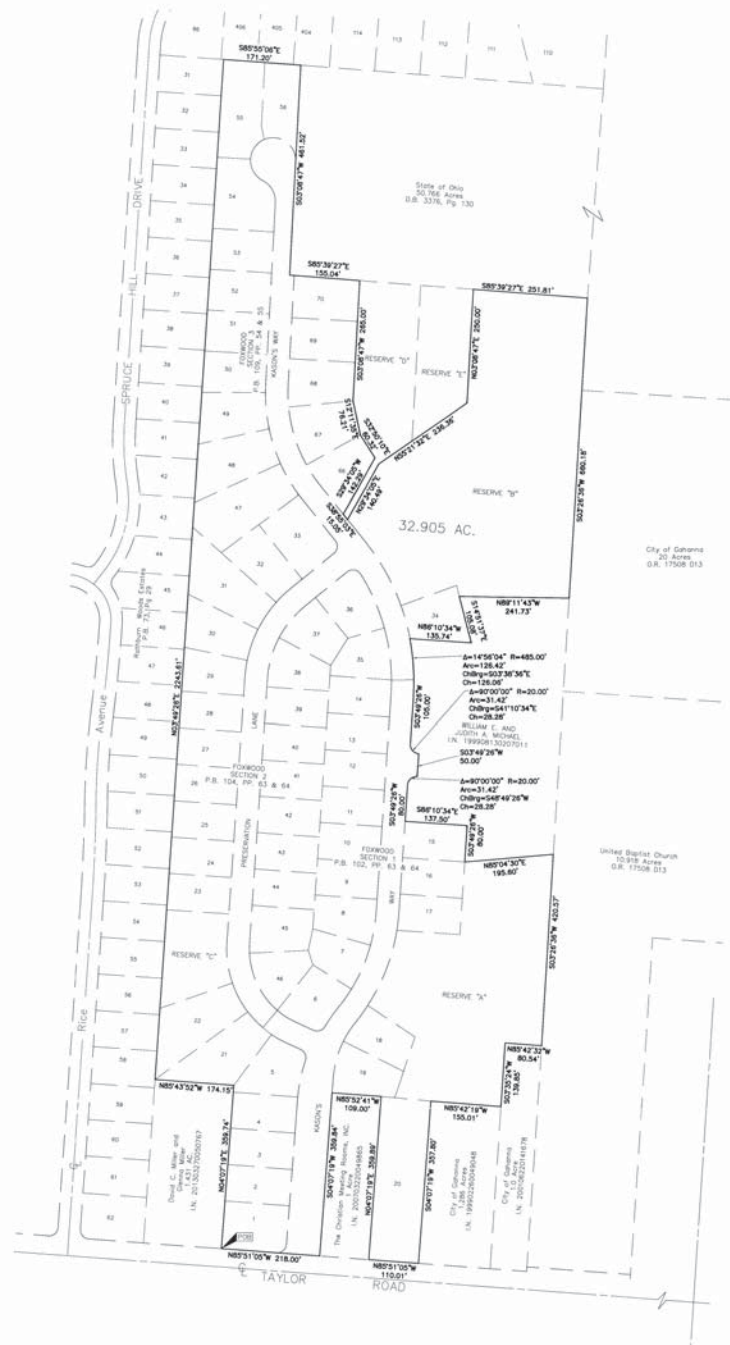
EMHT
 Earth, Mechanical, Hydrocarbon & Water, Inc.
 Engineers • Surveyors • Planners • Scientists
 250 West Avenue South, Columbus, OH 43054
 Phone 614.775.6881 Fax 614.775.5848
 emht.com

CITY OF GAHANNA, OHIO
ZONING EXHIBIT
FOXWOOD
SECTIONS 1, 2 & 3
OVERALL SITE PLAN

REVISIONS		
MARK	DATE	DESCRIPTION

ZONING EXHIBIT
 QUARTER TOWNSHIP 3, TOWNSHIP 1, RANGE 16
 UNITED STATES MILITARY LANDS
 CITY OF GAHANNA, COUNTY OF FRANKLIN, STATE OF OHIO

ORD-0058-2015



EMHT		Date: February 5, 2015
Scale: 1" = 100'		
Job No: 2012-1805		
Sheet: 1 of 1		
NO.	DATE	REVISIONS

