



Creating faster, more reliable transit & expanding sidewalks, bikeways and trails in

CENTRAL OHIO

Gahanna City Council : : :
June 17, 2024



INTRODUCTIONS

LINKUS TEAM

- **Monica Tellez-Fowler – President/CEO, COTA**
- **Kimberly Sharp – Senior Director of Development, COTA**
- **Elliott Lewis – Principal Planner, Mid-Ohio Regional Planning Commission (MOPRC)**



LINKUS OVERVIEW



WHY WE NEED EXPANDED TRANSIT NOW

Central Ohio's comprehensive transit plan brings more COTA service to the community and creates expanded opportunities for all.

GROWTH



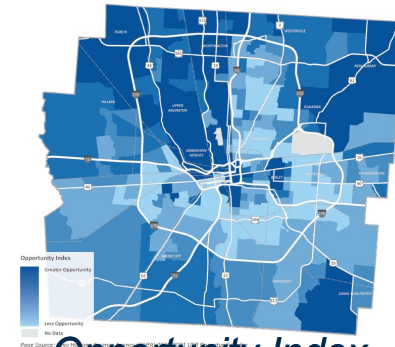
nearly 1 million new neighbors expected by 2050

AFFORDABILITY



\$12,700/year spent on transportation in the average Franklin County household. Central Ohio median home sale price up 45% since 2020.

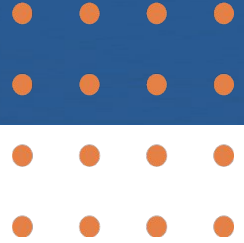
OPPORTUNITY GAPS



Opportunity Index
(lighter = less opportunity)

40,000 Franklin County households lack access to a personal vehicle. 1/3 of residents live in areas with persistent opportunity gaps.

MORE COTA, MORE SIDEWALKS, MORE OPTIONS



**FASTER, MORE
RELIABLE PUBLIC
TRANSPORTATION-
45% MORE SERVICE
HOURS**

**SAFER AND EXPANDED
SIDEWALKS, BIKEWAYS AND
TRAILS - 500+ MILES**

**FOCUSED GROWTH -
WALKABLE COMMUNITIES
WITH MORE AFFORDABLE
ACCESS TO WORK, HOME,
AND ENTERTAINMENT**

MOVING OUR REGION FORWARD, TOGETHER

WHO WILL BENEFIT FROM THE COTA LEVY?

The entire COTA service area will benefit from expanded transit and new sidewalks, bikeways and trails.

Franklin County and Portions of:

Delaware, Fairfield, Licking, and Union Counties

17 Cities

Bexley, Canal Winchester, Columbus, Dublin, Gahanna, Grandview Heights, Grove City, Groveport, Hilliard, New Albany, Obetz, Pickerington, Reynoldsburg, Upper Arlington, Westerville, Whitehall, and Worthington.

9 Villages

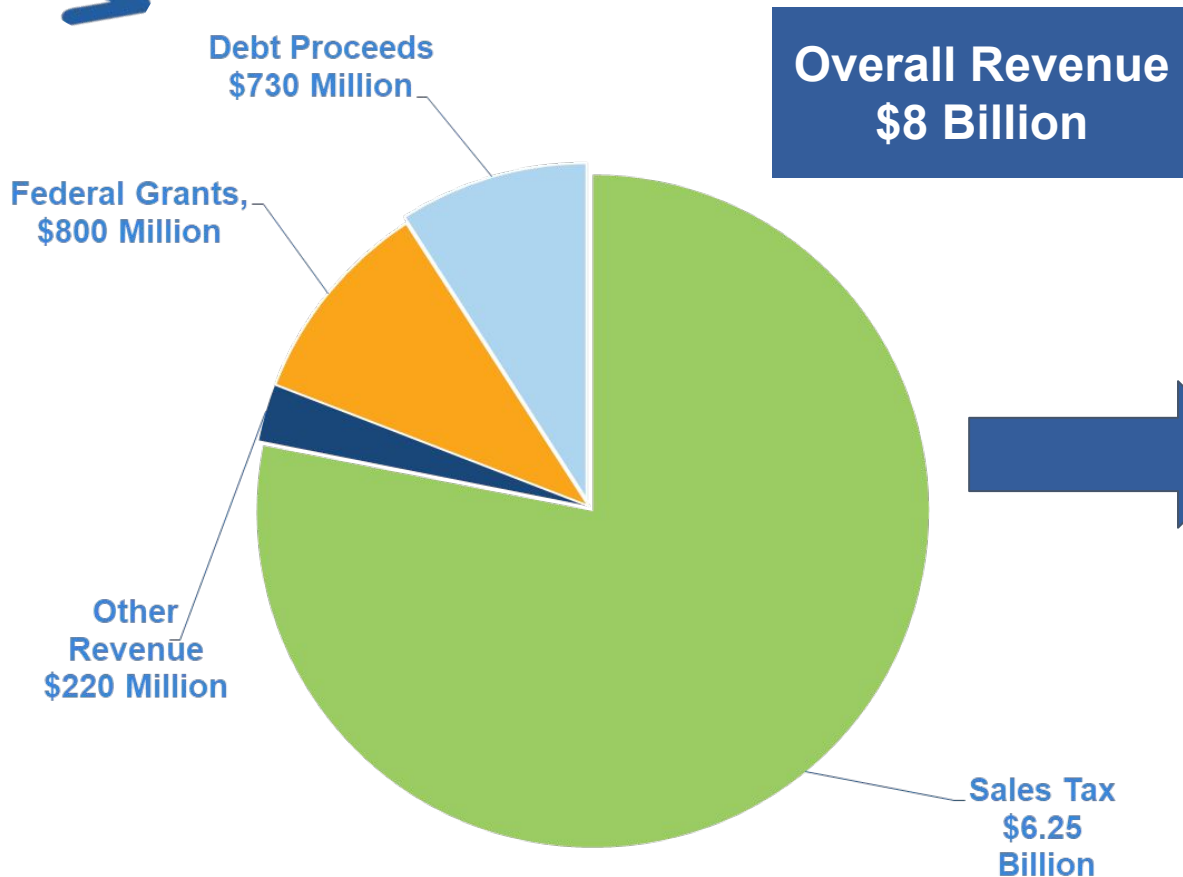
Brice, Harrisburg, Lockbourne, Marble Cliff, Minerva Park, Riverlea, Urbancrest, and Valleyview.

17 Townships

Blendon, Brown, Clinton, Franklin, Hamilton, Jackson, Jefferson, Madison, Marion, Mifflin, Norwich, Perry, Plain, Pleasant, Prairie, Sharon, Truro, and Washington.



COTA LEVY INVESTMENTS



Assumes adding a new **0.5% COTA sales tax** to the existing 0.5% COTA sales tax (November 2024)

= 1% continuing COTA sales tax

Consistent with investment levels in other regions

Leveraged to secure at least **\$800 million** in federal funding

~\$8 billion by 2050 and ~\$2 billion in new revenue by 2030



BUS RAPID TRANSIT

IS HIGH CAPACITY WITH
PREMIUM FEATURES
AND AMENITIES



Level Boarding and
Multi-Door Boarding



Off-Board
Fare Collection



Dedicated
Right-of-Way



Signal Priority and
Intersection Control



Modern and Branded
Vehicle Designs



Frequency
and Capacity



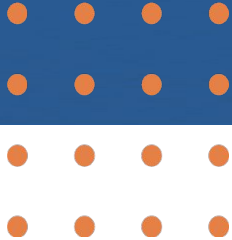
Enhanced Stations



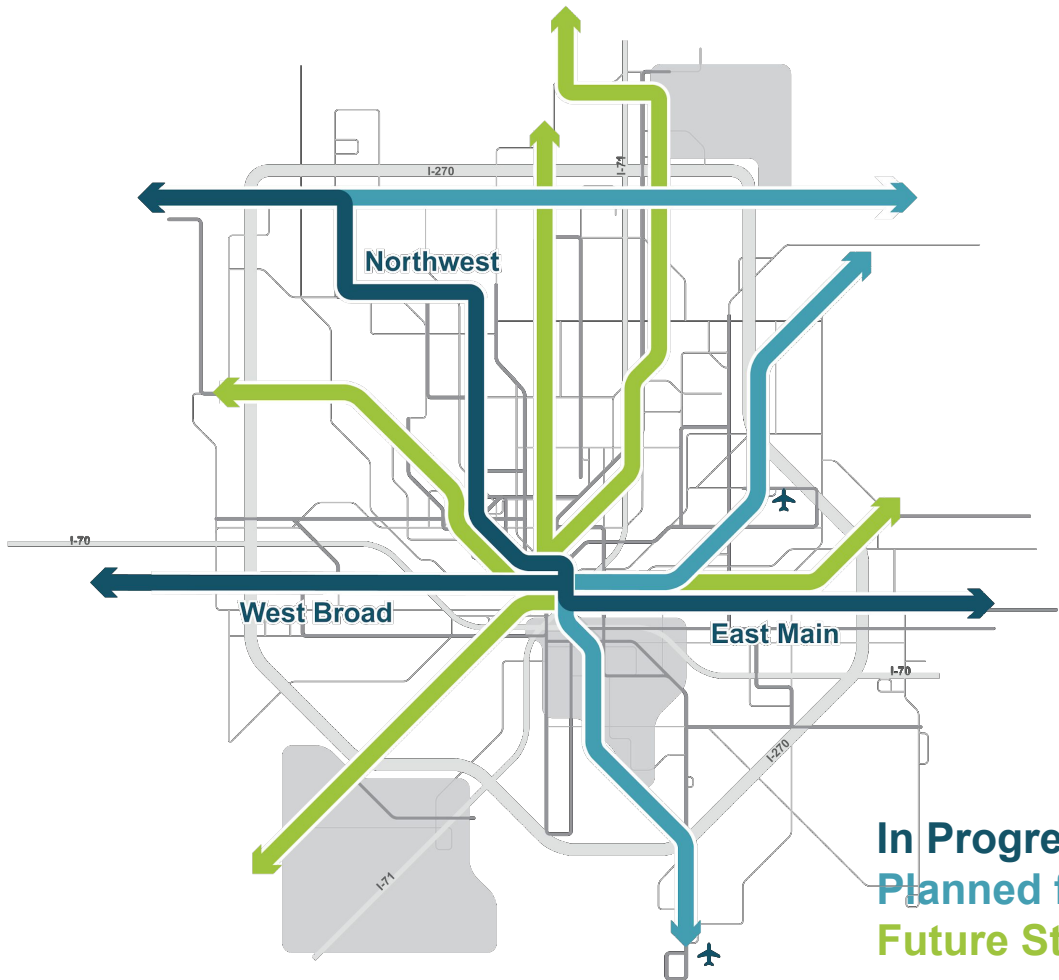
Clean Energy

To learn more about the key elements of premium transit, go to www.linkuscolumbus.com and check out the LinkUS Framework strategy.

BENEFITS OF BUS RAPID TRANSIT



REGIONAL TRANSIT VISION



Existing
Transit
Service

8
New
COTA//Plus
Zones

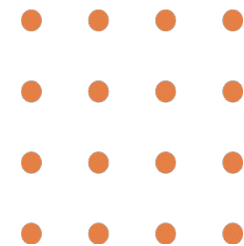
14
New or
Improved
Transit Lines

5
Rapid Transit
Lines

45%
More Service
Hours

In Progress
Planned for Near-term Study
Future Study





INCREASING ON-DEMAND TRANSIT OPTIONS IN CENTRAL OHIO

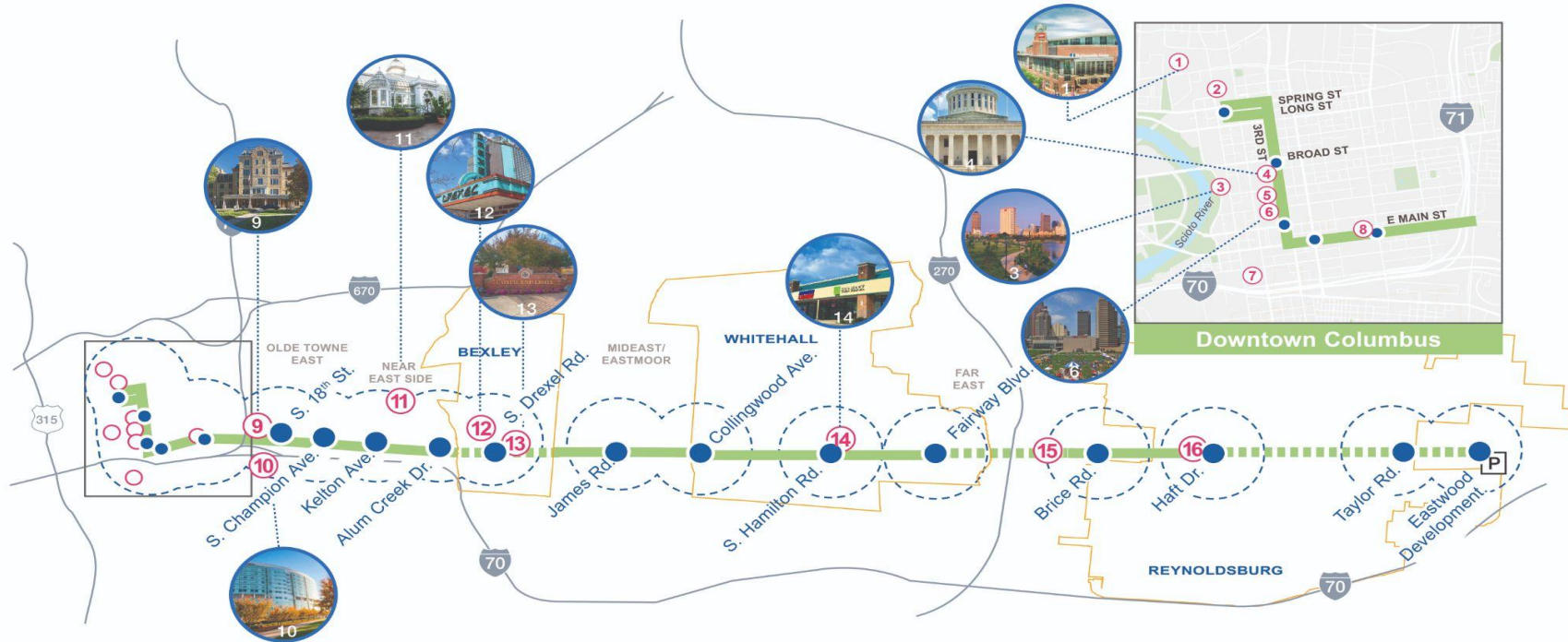
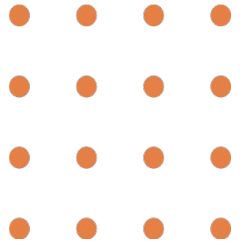
LinkUS' recommended improvements include:

- Up to 8 new COTA//Plus zones by 2050
- Expansion of the Mainstream and Mainstream On-Demand services
- Additional vehicles to help with increased service
- COTA//Plus garages
- Other micro-mobility and Mainstream enhancements



EAST MAIN CORRIDOR

ACTIVITY CENTERS / TRIP GENERATORS



- 17 BRT Stations
- BRT Station 1/2-Mile Area
- Mixed Flow Guideway
- Dedicated Guideway

13.6 MILES
\$329 MILLION

<p>East Main Street BRT Corridor</p> <ul style="list-style-type: none"> ● 18 BRT Stations BRT Station 1/2-Mile Area Mixed Traffic Dedicated Bus Lane 	<p># Activity Centers</p> <ul style="list-style-type: none"> 1 – Nationwide Arena 2 – Three Nationwide Plaza 3 – Scioto Mile 4 – Ohio Statehouse 5 – Ohio Theatre 6 – Columbus Commons 7 – Franklin County Courthouse 8 – Franklin University 9 – Columbus Public Health 10 – Nationwide Children’s Hospital 11 – Franklin Park 12 – Downtown Bexley 13 – Capital University 14 – Great Eastern Shopping Center 15 – Main 270 Shopping Center 16 – Reynoldsburg Shopping Center
--	--


STATION IN CONTEXT



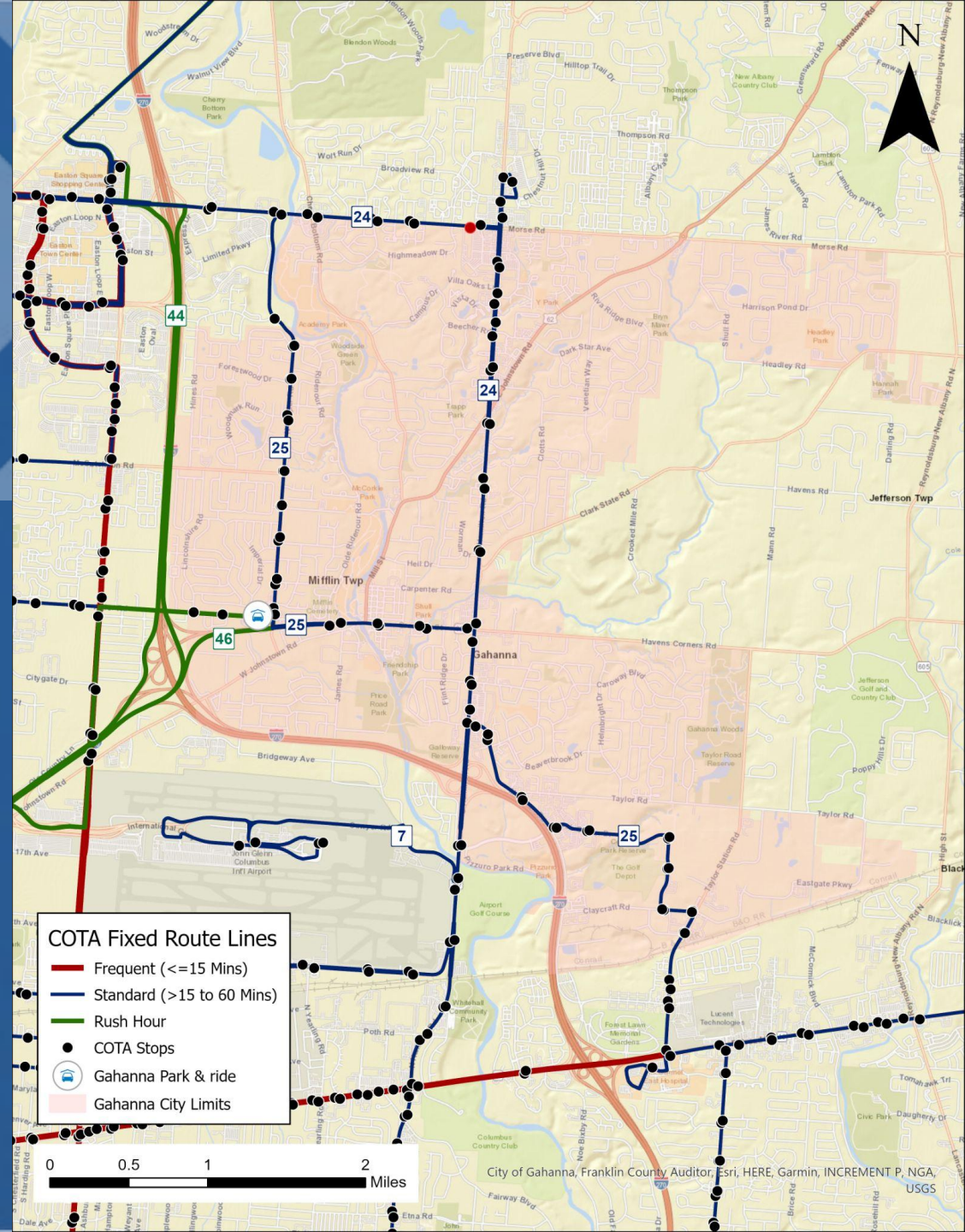
MICRO-MOBILITY HUB

PLAZA TYPE



-  Bike Rack
-  Scooter Corral / Charging
-  E-Bike Charging Station
-  Bike Repair Station
-  Bike Share Station

CURRENT AND PROPOSED COTA FIXED-ROUTE SERVICE IN GAHANNA



MARKETING/ OUTREACH/ COMMUNICATION

May-November

- Video Series Completion
- Ramped-up Paid Media
- Continued Content Development
- Dedicated Pages and Corridor Updates
- Engagement and Support
- Elevate updated messaging and COTA's affiliation with LinkUS

COTA | LinkUS
Moving our region Together.

ABOUT
LINKUS

What is LinkUS?

Our 15-county region is on track to reach 3.15 million residents by 2050! That amounts to 726,000 more people in about 25 years. LinkUS is our region's proactive plan to bring rapid transit solutions and transportation options to accommodate major population growth, and it includes:

-  Faster, more reliable public transportation
-  Safe and expanded bike and pedestrian paths
-  Walkable communities with more affordable access to work, home and entertainment



Creating More Walkable Communities with Sidewalk & Trail Improvements

Transit supportive infrastructure (TSI), which is another way to describe sidewalks, is key to building communities where driving is optional. TSI is everything in between your door and getting on the bus – that includes sidewalks, trails and crosswalks.

We're making historic investments in sidewalks, trails and crosswalks to expand transit access and connections for everyone across the region, making it safer, easier and more convenient to get around.



Funding TSI Improvements

Our investment in TSI will build new – and improve existing – sidewalks, trails, bike lanes, roadways and marked crossings. And we're paying close attention to how that funding is distributed with the help of MCDSPC, who has helped identify over 100 improvements alongside the community.

- 330+ TSI projects under consideration
- 130+ identified as local priorities
- 500+ miles of trails, sidewalks, bike paths

In 2024, our TSI Committees will:

- Finalize program policies
- Develop TSI Capital Improvement Projects/budget
- Communicate project priorities
- Collaborate to get priority projects "grant-ready" and maintain pipeline of projects

A Faster, More Efficient Mass Transit Option: Bus Rapid Transit



The Benefits of BRT

Bus Rapid Transit (BRT) is not your standard bus service. BRT combines the capacity and speed of a metro with the flexibility and affordability of a bus system. This premium transit solution includes:

- Increased capacity, zero-emission vehicles
- Level- and multi-door boarding
- Off-board fare collection
- Signal priority and intersection control
- Dedicated transit lanes
- Improved stations with amenities

Want to learn more about BRT and how it will be implemented? Visit our [Rapid Transit Corridor page](#).



SIDEWALKS, BIKEWAYS AND TRAILS

Transit Supportive Infrastructure (TSI)



SIDEWALKS, BIKEWAYS AND TRAILS



Safer and Expanded Bike and Pedestrian Paths



500+ Miles

~\$250 Million

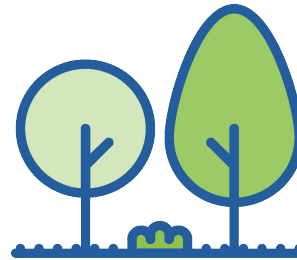
Complete Street Roadway Investments



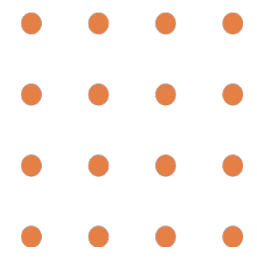
Sidewalks



Bikeways



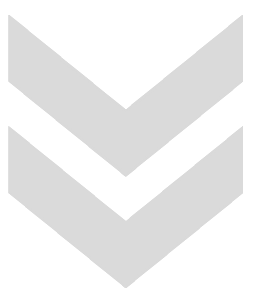
Trails



TRANSIT SUPPORTIVE INFRASTRUCTURE (TSI)

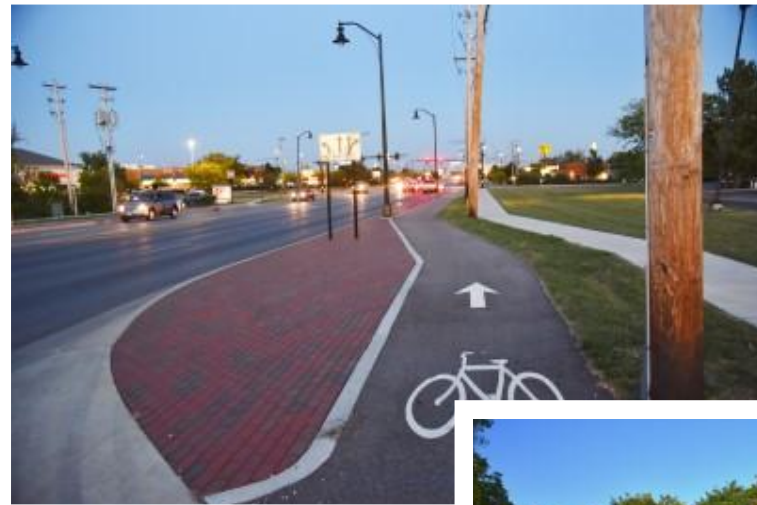
27.5%

Dedicated of the New 0.5% Sales Tax Collection



~\$60M

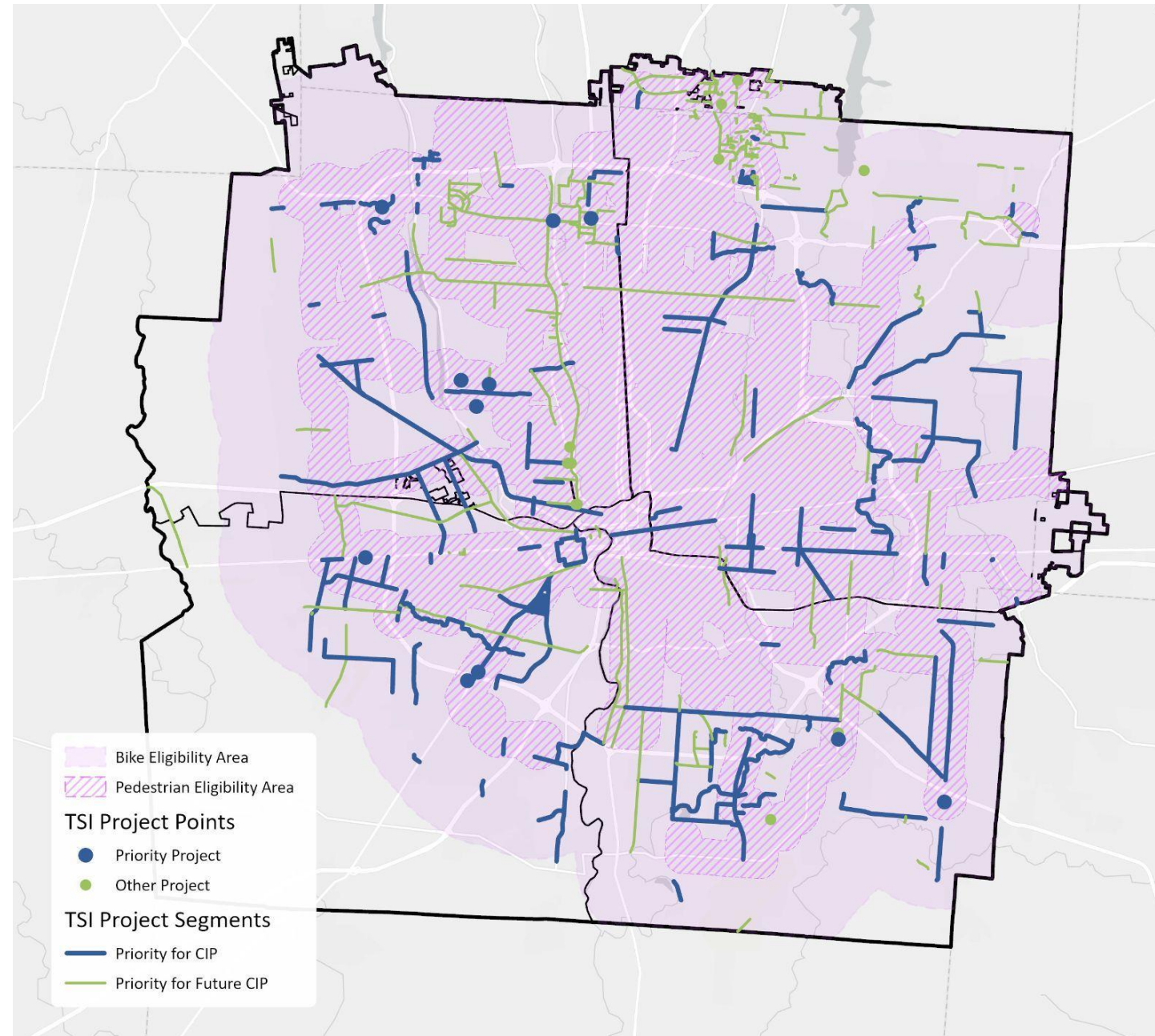
Estimated Annual Collections Dedicated to Transit Supportive Infrastructure





TSI REGIONAL PRIORITIES

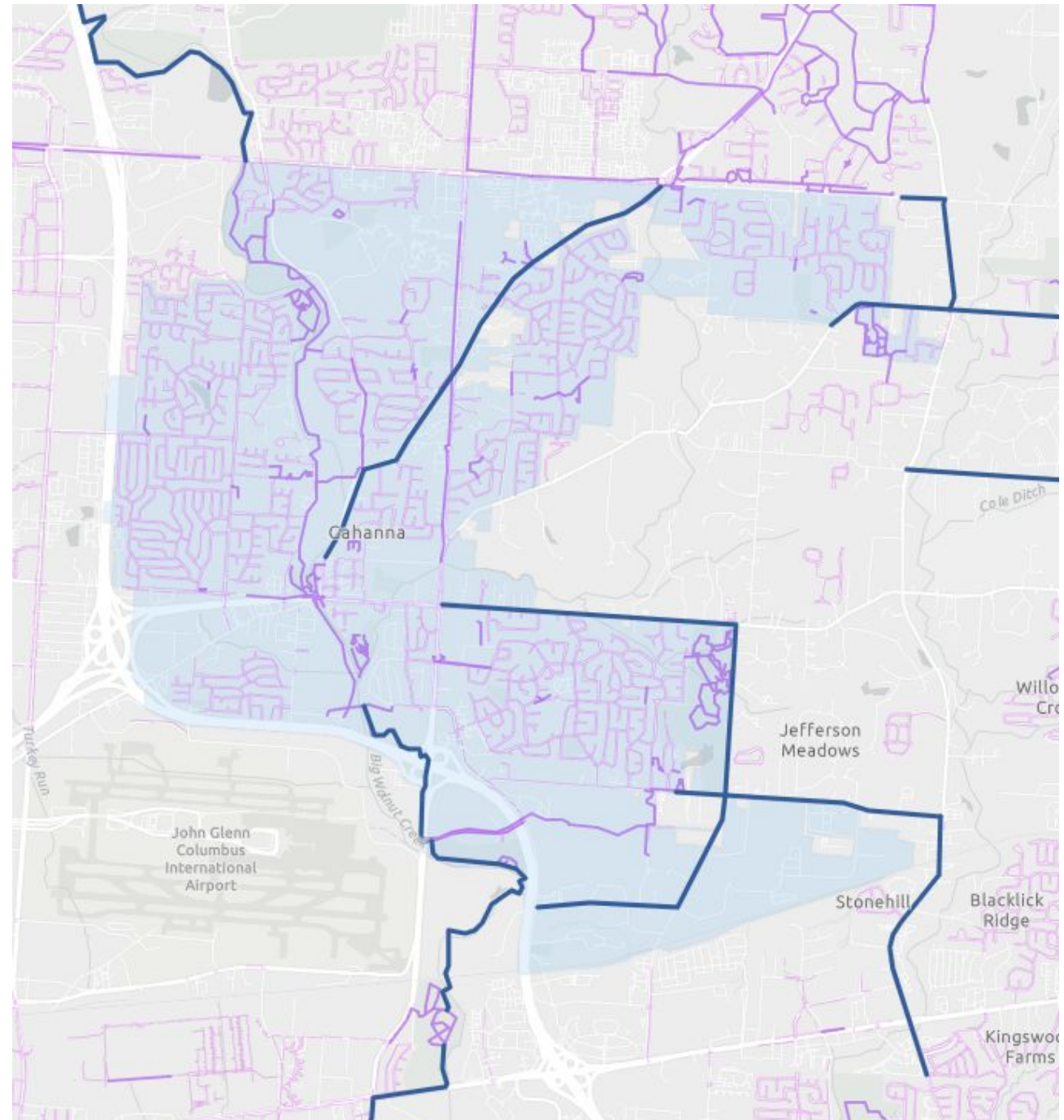
- 330+ projects under consideration
- 130+ identified as local priorities
- 360+ miles of trails, sidewalks, bike paths
- \$500-700 M in total estimated project costs
- Collaborating to complete feasibility studies and cost estimates for conceptual projects





GAHANNA TSI PROJECTS

- Big Walnut Trail Extensions
 - Sunbury Rd to Morse Rd
 - Rocky Fork Dr to Tech Center Dr
 - Tech Center Dr to Whitehall
- Johnstown Rd SUP/SW
- Havens Corner Rd/Taylor Station Rd SUP
- Claycraft Rd/Taylor Station Rd SUP
- Taylor Rd SUP
- Clark State Rd SUP



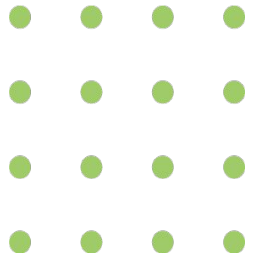


MAKING INVESTMENTS TO BENEFIT ALL

Equitable Transit-Oriented Development (ETOD)



CENTRAL OHIO HOUSING LANDSCAPE



- The region needs **200,000** additional housing units to make up for the underbuilding in the last decade and accommodate the projected growth.
- Housing scarcity causes housing prices to rise both in the aggregate and most acutely near areas of opportunity.
- Impacts of the housing scarcity are being felt by families in our community today.



An Equitable Transit-Oriented Development Strategy (ETOD) is intended to:

- **Preserves** existing housing, jobs, businesses and community resources.
- **Creates** new housing, business investments, jobs and amenities.
- **Ensures** affordable housing and access to opportunities, services and amenities for all residents.

Central Ohio Transit Oriented Development





TRANSIT-ORIENTED DEVELOPMENT CASE STUDY

CLEVELAND HEALTHLINE



4.5

Number of miles on
dedicated transit guideway

\$200M

Total Cost

\$25M

Amount of ODOT
Funding

\$9.5B+

Amount of economic
development—\$190 gained for
every dollar spent on creating
and launching the service

8,800+

Number of residential
units built along
Healthline

13,000

Number of jobs created
along the Healthline



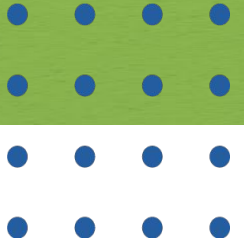


ACHIEVING DESIRED OUTCOMES:

- Creating great places
- Increasing equitable access to opportunity
- Accommodating future growth in productive ways
- Improving economic vibrancy
- Shaping the future and reimagining the region for shared prosperity



NEXT STEPS



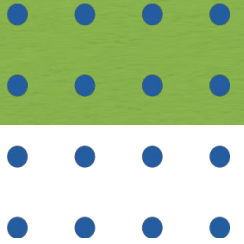
- Continue engagement of community, government, non-profit, and business stakeholders
- Continue corridor design and federal grants process
- COTA staff bring ballot language for board consideration (May)
- Equitable Transit-Oriented Development Action Plan (June)
- Plans for expanding sidewalks, bike paths and trails (August)
- COTA levy (November)

OUR REQUESTS



- Continue participating in the TSI Committee process to develop the capital improvement program
- Help your residents understand what's in it for them
 - A fact sheet has been customized for your community.
- Encourage your residents to sign up for the LinkUS e-newsletter and follow us
- Invite us to provide presentations, table at your community events and brief your organizations

STAY CONNECTED



- All informational videos
- Downloadable resources
- Media coverage
- Ways to stay connected for updates or get in contact with the team

