

CUSTOM BUILDERS • DEVELOPERS

430 Beecher Road
Gahanna, Ohio 43230



(614) 855-4545
(614) 939-1692 Fax

City of Gahanna
Engineer Office

Attn: Carl Weatherholt

August 28th, 2002

Dear Carl,

This letter is a formal request for emergency acceptance of the improvements hereby completed at the subdivision known as Rivers Edge. As of August 27th, 2002 improvements including utilities and street pavements have been completed.

Your assistance in this matter is greatly appreciated. Please call if you are in need of any further information.

Sincerely,

A handwritten signature in black ink, appearing to read "Loreto V. Canini", with a long, sweeping underline that extends to the right.

Loreto V. Canini
Canini & Pelleccia, Inc.

EXHIBIT A

200 SOUTH HAMILTON ROAD
FAX: (614) 337-4381



GAHANNA, OHIO 43230-2996
TELEPHONE: (614) 471-6009

**CERTIFICATE OF COMPLETION
FOR
RIVERS EDGE**

TO: Mr. Larry Canini
CANINI & PELLECCCHIA
430 Beecher Road
Gahanna, Ohio 43230

RE: Rivers Edge
Street, Storm, Water Improvement #811
Sanitary Improvement #812

In accordance with the provisions of Chapter 1105.07 of the Gahanna Codified Ordinance for the subject improvements, this Certificate of Completion is hereby issued this 5th day of September, 2002.

CITY OF GAHANNA, OHIO

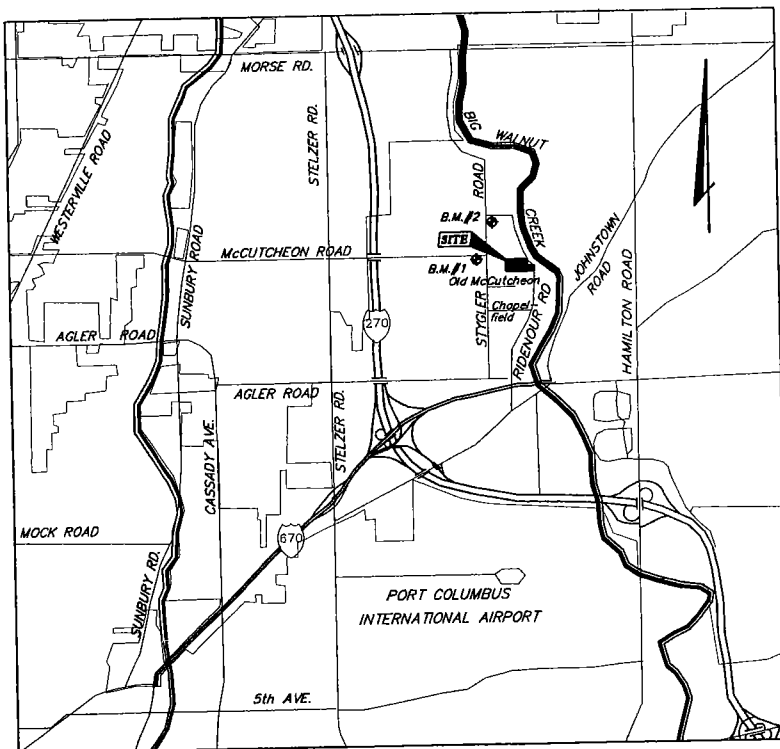
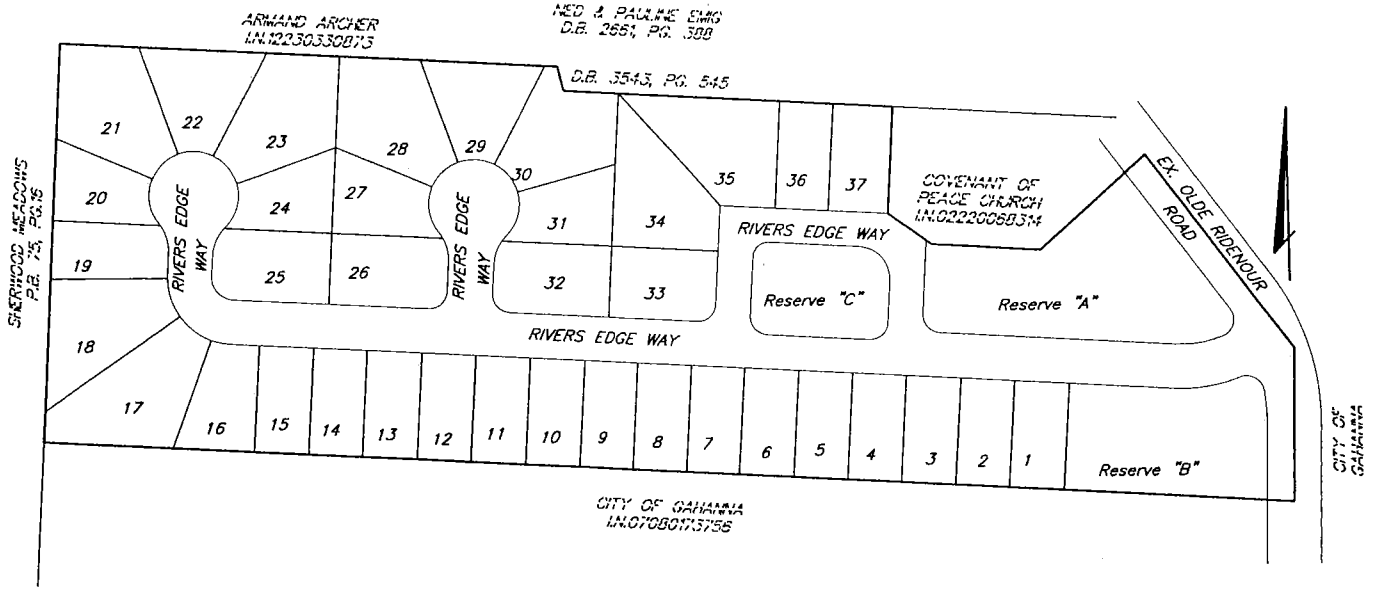
A handwritten signature in black ink, appearing to read "Karl C. Wetherholt", is written over a horizontal line.

Karl C. Wetherholt, PE
City Engineer

cc: Clerk of Council
Director of Public Service
Building Inspector
Division Water/Sewer
Inspector
File

Canini & Pellecchia, Inc.

River's Edge



River's Edge is a single family residential subdivision. Development includes storm sewers, sanitary sewers, waterlines and streets, which are being dedicated to the City of Gahanna.

This subdivision is comprised of the following:

12.34	Acres
37	Lots
1,500 L.F.	Sanitary Sewer
2,805 L.F.	Storm Sewer
2,045 L.F.	Water Main
10 Ea.	Street Lights
1,888 L.F.	Streets